



Chipsmall Limited consists of a professional team with an average of over 10 year of expertise in the distribution of electronic components. Based in Hongkong, we have already established firm and mutual-benefit business relationships with customers from,Europe,America and south Asia,supplying obsolete and hard-to-find components to meet their specific needs.

With the principle of "Quality Parts,Customers Priority,Honest Operation,and Considerate Service",our business mainly focus on the distribution of electronic components. Line cards we deal with include Microchip,ALPS,ROHM,Xilinx,Pulse,ON,Everlight and Freescale. Main products comprise IC,Modules,Potentiometer,IC Socket,Relay,Connector.Our parts cover such applications as commercial,industrial, and automotives areas.

We are looking forward to setting up business relationship with you and hope to provide you with the best service and solution. Let us make a better world for our industry!



## Contact us

Tel: +86-755-8981 8866 Fax: +86-755-8427 6832

Email & Skype: info@chipsmall.com Web: www.chipsmall.com

Address: A1208, Overseas Decoration Building, #122 Zhenhua RD., Futian, Shenzhen, China



6

5

4

3

2

1

DRWG. NO. CD-1905

PART NUMBERS ARE FOR LOOSE PIECE TO ORDER PARTS ON TAPE ADD A "T" TO END OF PART NUMBER

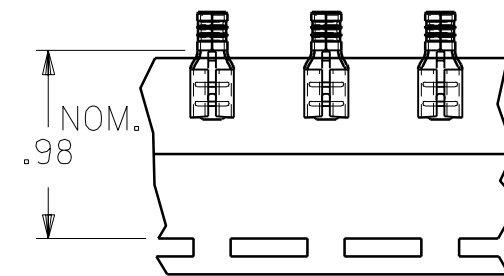
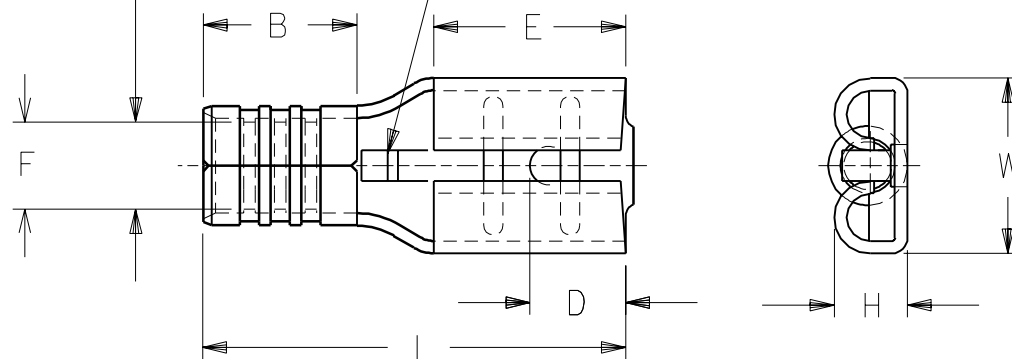
D

PART NUMBER	WIRE RANGE AWG	WIRE RANGE MM <sup>2</sup>	FITS MALE TAB SIZE	STOCK THICK.	"L" MAX.	"B" ±.01	"W" MAX.	"D" ±.01	"H" ±.01	"E" NOM.	"F" MIN	
AA-1140	22-18	0.25-1.3	.250x.032	.016	.66	.190	.30	.156	.103	.31	Ø.062	

D

WIRE RANGE

WIRE STOP



PARTS ON TAPE

MATERIAL: BRASS  
FINISH: ELECTRO-TIN PLATING

A  
RELEASE OF NEW  
CUSTOMER DWG  
ETC70766 3/25 EDB

LTR. REVISIONS

DIMENSIONS SHOWN (METRIC) INCH

UNLESS OTHERWISE SPECIFIED  
TOLERANCES: ANGULAR ± 1/2°

	INCH	METRIC
3 PLACE	± .005	± ---
2 PLACE	± .01	± 0.13
1 PLACE	± ---	± 0.25

DRAFT WHERE APPLICABLE MUST  
REMAIN WITHIN DIMENSIONS

DRWG. BY	EDB	CHK'D. BY	RWD
APP'D. BY	RWD	SCALE	:

REVISE ONLY ON CAD SYSTEM

TITLE  
KRIMPTITE  
QUICK DISCONNECT  
AA-1140 22-18 AWG

molex ETC INC. SHEET NO. DATE  
PINELLAS PARK, FLA. 33781 U.S.A. 97 / 3/24

PART NO. AA-1140 DRWG. NO. CD-1905

FILE NAME CD1905 CST THIS DRAWING CONTAINS INFORMATION THAT IS PROPRIETARY TO MOLEX-ETC INC. AND SHOULD NOT BE USED WITHOUT WRITTEN PERMISSION. DIV. SIZE A

6

5

4

3

2

1

A