



Chipsmall Limited consists of a professional team with an average of over 10 year of expertise in the distribution of electronic components. Based in Hongkong, we have already established firm and mutual-benefit business relationships with customers from,Europe,America and south Asia,supplying obsolete and hard-to-find components to meet their specific needs.

With the principle of “Quality Parts,Customers Priority,Honest Operation,and Considerate Service”,our business mainly focus on the distribution of electronic components. Line cards we deal with include Microchip,ALPS,ROHM,Xilinx,Pulse,ON,Everlight and Freescale. Main products comprise IC,Modules,Potentiometer,IC Socket,Relay,Connector.Our parts cover such applications as commercial,industrial, and automotives areas.

We are looking forward to setting up business relationship with you and hope to provide you with the best service and solution. Let us make a better world for our industry!



## Contact us

Tel: +86-755-8981 8866 Fax: +86-755-8427 6832

Email & Skype: info@chipsmall.com Web: www.chipsmall.com

Address: A1208, Overseas Decoration Building, #122 Zhenhua RD., Futian, Shenzhen, China



6

5

4

3

2

1

DRWG. NO. CD-1906

PART NUMBERS ARE FOR LOOSE PIECE TO ORDER PARTS ON TAPE ADD A "T" TO END OF PART NUMBER

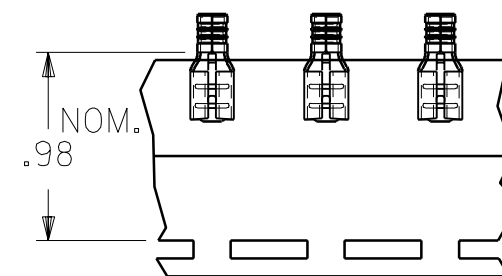
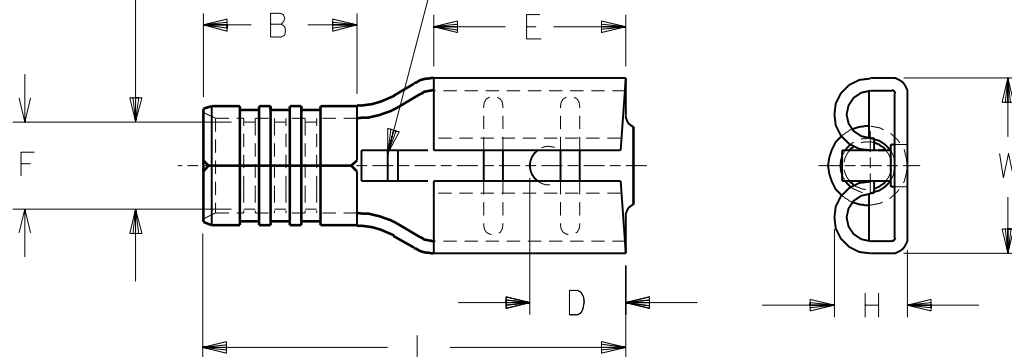
D

PART NUMBER	WIRE RANGE AWG	FITS MALE MM <sup>2</sup> TAB SIZE	STOCK THICK.	"L" MAX.	"B" ±.01	"W" MAX.	"D" ±.01	"H" ±.01	"E" NOM.	"F" MIN	
BB-1141	16-14	1.0-2.6	.250x.032	.016	.66	.190	.30	.156	.103	.31	∅.084

D

WIRE RANGE

WIRE STOP



PARTS ON TAPE

MATERIAL: BRASS  
FINISH: ELECTRO-TIN PLATING

A	RELEASE OF NEW CUSTOMER DWG ETC70766 3/25 EDB
LTR.	REVISIONS

DIMENSIONS SHOWN (METRIC) INCH

UNLESS OTHERWISE SPECIFIED  
TOLERANCES: ANGULAR ± 1/2°

	INCH	METRIC
3 PLACE	± .005	± ---
2 PLACE	± .01	± 0.13
1 PLACE	± ---	± 0.25

DRAFT WHERE APPLICABLE MUST  
REMAIN WITHIN DIMENSIONS

DRWG. BY	EDB	CHK'D. BY	RWD
APP'D. BY	RWD	SCALE	:

REVISE ONLY ON CAD SYSTEM

TITLE

KRIMPTITE  
QUICK DISCONNECT  
BB-1141 16-14 AWG

**molex ETC INC.**  
PINELLAS PARK, FLA. 33781 U.S.A.

SHEET NO.

DATE

97 / 3/24

PART NO.

BB-1141

DRWG. NO.

CD-1906

FILE NAME  
CD1906  
CSTTHIS DRAWING CONTAINS INFORMATION THAT IS PROPRIETARY TO  
MOLEX-ETC INC. AND SHOULD NOT BE USED WITHOUT WRITTEN PERMISSION.

DIV.

SIZE  
A

A

6

5

4

3

2

1