



Chipsmall Limited consists of a professional team with an average of over 10 year of expertise in the distribution of electronic components. Based in Hongkong, we have already established firm and mutual-benefit business relationships with customers from,Europe,America and south Asia,supplying obsolete and hard-to-find components to meet their specific needs.

With the principle of “Quality Parts,Customers Priority,Honest Operation,and Considerate Service”,our business mainly focus on the distribution of electronic components. Line cards we deal with include Microchip,ALPS,ROHM,Xilinx,Pulse,ON,Everlight and Freescale. Main products comprise IC,Modules,Potentiometer,IC Socket,Relay,Connector.Our parts cover such applications as commercial,industrial, and automotives areas.

We are looking forward to setting up business relationship with you and hope to provide you with the best service and solution. Let us make a better world for our industry!



Contact us

Tel: +86-755-8981 8866 Fax: +86-755-8427 6832

Email & Skype: info@chipsmall.com Web: www.chipsmall.com

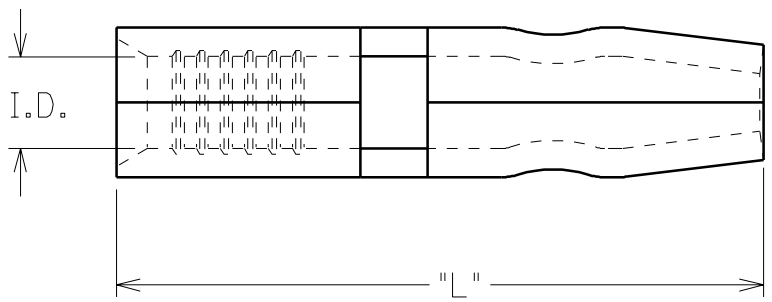
Address: A1208, Overseas Decoration Building, #122 Zhenhua RD., Futian, Shenzhen, China



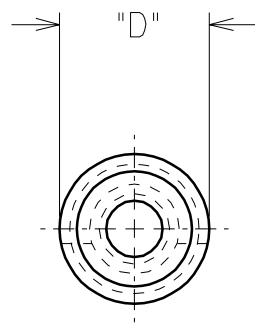
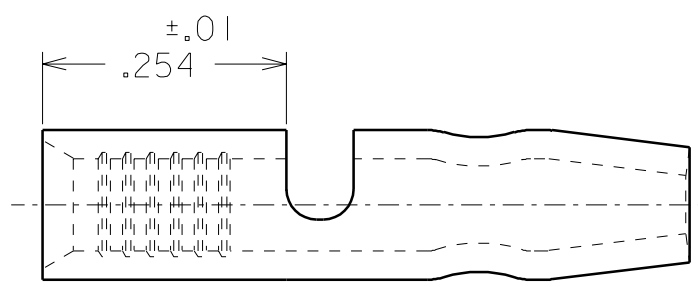
PART NUMBER	WIRE RANGE AWG	±.003 "I.D."	±.002 "D"	±.02 "L"
A-159	22-18	.065	.180	.734
A-169	22-18	.065	.156	.674
B-179	16-14	.084	.180	.734
B-189	16-14	.084	.156	.674

DRWG. NO. CD-1802

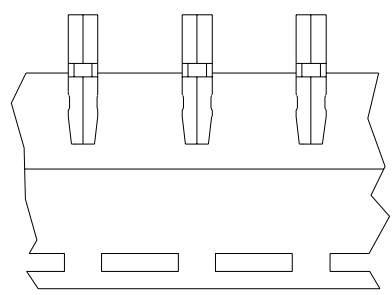
PART NUMBERS ARE FOR LOOSE PIECE. TO ORDER PARTS ON TAPE ADD "T" TO END OF PART NUMBER



MATERIAL: COPPER .031 ±.001 THICK
FINISH: ELECTRO-TIN PLATING
THICKNESS .000030 MINIMUM



C	.064 WAS .126 .084 WAS .156 ETC60466 6/18 RCM
B	ADDED PLATING THICKNESS ETC60363 3/14 RCM
A	ADDED TOLERANCES REVISED DIMENSIONS ETC60322 2/6 RCM
LTR.	REVISIONS



PARTS ON TAPE

DIMENSIONS SHOWN (METRIC) INCH		
UNLESS OTHERWISE SPECIFIED TOLERANCES: ANGULAR ± 1/2°		
	INCH	METRIC
3 PLACE	± .005	± ---
2 PLACE	± .01	± 0.13
1 PLACE	± ---	± 0.25

DRAFT WHERE APPLICABLE MUST REMAIN WITHIN DIMENSIONS

DRWG. BY	RCM	CHK'D. BY	RWD
APP'D. BY	RWD	SCALE	NO:NE

REVISE ONLY ON CAD SYSTEM	
TITLE	
KRIMPTITE MALE BULLET SNAP PLUG	
ETC INC. PINELLAS PARK, FLA. 33781 U.S.A.	SHEET NO. _____ DATE 92/09/29
PART NO. SEE CHART	DRWG. NO. CD-1802
FILE NAME CD1802 CST	THIS DRAWING CONTAINS INFORMATION THAT IS PROPRIETARY TO MOLEX-ETC INC. AND SHOULD NOT BE USED WITHOUT WRITTEN PERMISSION.
DIV. _____	SIZE A