



Chipsmall Limited consists of a professional team with an average of over 10 year of expertise in the distribution of electronic components. Based in Hongkong, we have already established firm and mutual-benefit business relationships with customers from,Europe,America and south Asia,supplying obsolete and hard-to-find components to meet their specific needs.

With the principle of “Quality Parts,Customers Priority,Honest Operation,and Considerate Service”,our business mainly focus on the distribution of electronic components. Line cards we deal with include Microchip,ALPS,ROHM,Xilinx,Pulse,ON,Everlight and Freescale. Main products comprise IC,Modules,Potentiometer,IC Socket,Relay,Connector.Our parts cover such applications as commercial,industrial, and automotives areas.

We are looking forward to setting up business relationship with you and hope to provide you with the best service and solution. Let us make a better world for our industry!



## Contact us

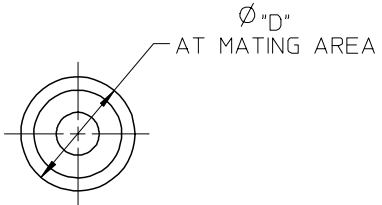
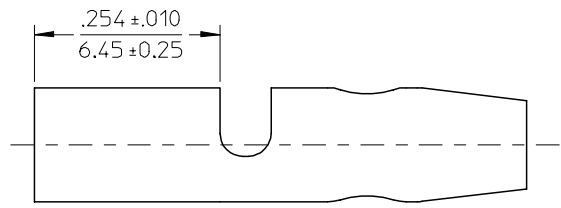
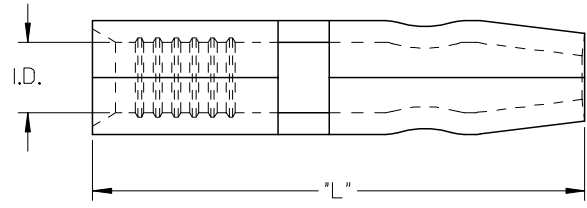
Tel: +86-755-8981 8866 Fax: +86-755-8427 6832

Email & Skype: info@chipsmall.com Web: www.chipsmall.com

Address: A1208, Overseas Decoration Building, #122 Zhenhua RD., Futian, Shenzhen, China



MATERIAL NUMBER	ENG. NUMBER	WIRE RANGE AWG	"I.D." MIN	"D" ±.002/0.05	"L" ±.010/0.25
190330001	A-159	22-18	ⓔ .056/1.42	.182/4.62	.754/19.15
190330003	A-169	22-18	ⓔ .056/1.42	.158/4.01	.700/17.78
190330005	B-179	16-14	.084/2.13	.182/4.62	.754/19.15
190330007	B-189	16-14	.084/2.13	.158/4.01	.700/17.78



ⓔ

SALES DRAWING

NOTE(S):

1. MATERIAL: COPPER .032/0.81 THK
2. FINISH: ELECTRO-TIN

REMOVE TAPE SPECS. EC NO: ETC2005-0080 DRW:DMYRICK 2004/11/04 CHKD:RDEROSS 2004/11/04 APPR:RDEROSS 2004/11/04	QUALITY SYMBOLS ▽=0 ▽=0	GENERAL TOLERANCES (UNLESS SPECIFIED)		DIMENSION STYLE	SCALE	DESIGN UNITS	THIRD ANGLE PROJECTION	
		mm	INCH	IN/MM	INCH	INCH		
		4 PLACES	± ---	± ---	DRAWN BY	DATE	TITLE	
		3 PLACES	± ---	± ---	RMARSHAL	92/09/29	KRIPTITE MALE BULLET SNAP PLUG .180 AND .156	
2 PLACES	± ---	± ---	CHECKED BY	DATE				
1 PLACE	± ---	± ---	RDEROSS	92/09/29				
ANGULAR ± ---°		APPROVED BY		DATE	MOLEX INCORPORATED			
		RDEROSS		92/09/29	MATERIAL NO. SEE CHART		DOCUMENT NO. SD-19033-001	
DRAFT WHERE APPLICABLE MUST REMAIN WITHIN DIMENSIONS		SIZE B		THIS DRAWING CONTAINS INFORMATION THAT IS PROPRIETARY TO MOLEX INCORPORATED AND SHOULD NOT BE USED WITHOUT WRITTEN PERMISSION				