



Chipsmall Limited consists of a professional team with an average of over 10 year of expertise in the distribution of electronic components. Based in Hongkong, we have already established firm and mutual-benefit business relationships with customers from,Europe,America and south Asia,supplying obsolete and hard-to-find components to meet their specific needs.

With the principle of “Quality Parts,Customers Priority,Honest Operation,and Considerate Service”,our business mainly focus on the distribution of electronic components. Line cards we deal with include Microchip,ALPS,ROHM,Xilinx,Pulse,ON,Everlight and Freescale. Main products comprise IC,Modules,Potentiometer,IC Socket,Relay,Connector.Our parts cover such applications as commercial,industrial, and automotives areas.

We are looking forward to setting up business relationship with you and hope to provide you with the best service and solution. Let us make a better world for our industry!



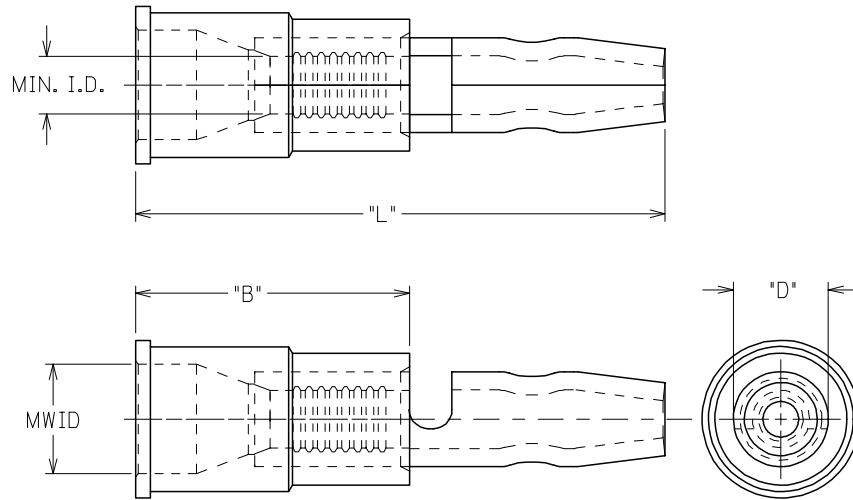
Contact us

Tel: +86-755-8981 8866 Fax: +86-755-8427 6832

Email & Skype: info@chipsmall.com Web: www.chipsmall.com

Address: A1208, Overseas Decoration Building, #122 Zhenhua RD., Futian, Shenzhen, China





MATERIAL: COPPER
 .031" NOM. THICKNESS
 FINISH: ELECTRO-TIN PLATING

MWID= MAX. WIRE INSULATION DIA.
 PART NUMBERS ARE FOR LOOSE PIECE TO ORDER PARTS ON TAPE ADD A "T" TO END OF PART NUMBER

MATERIAL NO.	ENGR NO.	WIRE RANGE AWG	DIAMETER "D"	MAX. "L"	±.01 "B"	MWID	MIN. I.D.			INSULATION
190340002	A-259X	22-18	.180	.950	.450	.145	.056			PVC
190340005	A-269X	22-18	.156	.890	.450	.145	.056			PVC
190340007	B-279X	16-14	.180	.950	.450	.175	.084			PVC
190340009	B-289X	16-14	.156	.890	.450	.175	.084			PVC

REMOVED TAPE PARTS

EC NO:	2005/04/27
DRWN:LSHADECK	2005/05/04
CHKDR:DEROSS	2005/05/04
APPR:RDEROSS	2005/05/04
REV	DESCRIPTION
A	

QUALITY SYMBOLS	DESCRIPTION
▽=0	
▽=0	

GENERAL TOLERANCES (UNLESS SPECIFIED)	mm	INCH
	4 PLACES	± --- ± ---
	3 PLACES	± --- ± ---
	2 PLACES	± --- ± ---
1 PLACE	± --- ± ---	
ANGULAR		± ---°
DRAFT WHERE APPLICABLE MUST REMAIN WITHIN DIMENSIONS		

DIMENSION STYLE		SCALE	DESIGN UNITS	THIRD ANGLE PROJECTION
IN/MM		5:1	INCH	
DRAWN BY	DATE	TITLE		
EMF	07/30/93	INSULKRIMP MALE BULLET SNAP PLUG		
CHECKED BY	DATE	MATERIAL NO.		
JM	07/30/93	SEE TABLE		
APPROVED BY	DATE	DOCUMENT NO.		
FP	07/30/93	SD-19034-004		
SHEET NO.		THIS DRAWING CONTAINS INFORMATION THAT IS PROPRIETARY TO MOLEX INCORPORATED AND SHOULD NOT BE USED WITHOUT WRITTEN PERMISSION		
1 OF 1				

MATERIAL NO.		DOCUMENT NO.		SHEET NO.
SEE TABLE		SD-19034-004		1 OF 1
THIS DRAWING CONTAINS INFORMATION THAT IS PROPRIETARY TO MOLEX INCORPORATED AND SHOULD NOT BE USED WITHOUT WRITTEN PERMISSION				