



Chipsmall Limited consists of a professional team with an average of over 10 year of expertise in the distribution of electronic components. Based in Hongkong, we have already established firm and mutual-benefit business relationships with customers from,Europe,America and south Asia,supplying obsolete and hard-to-find components to meet their specific needs.

With the principle of “Quality Parts,Customers Priority,Honest Operation,and Considerate Service”,our business mainly focus on the distribution of electronic components. Line cards we deal with include Microchip,ALPS,ROHM,Xilinx,Pulse,ON,Everlight and Freescale. Main products comprise IC,Modules,Potentiometer,IC Socket,Relay,Connector.Our parts cover such applications as commercial,industrial, and automotives areas.

We are looking forward to setting up business relationship with you and hope to provide you with the best service and solution. Let us make a better world for our industry!



## Contact us

Tel: +86-755-8981 8866 Fax: +86-755-8427 6832

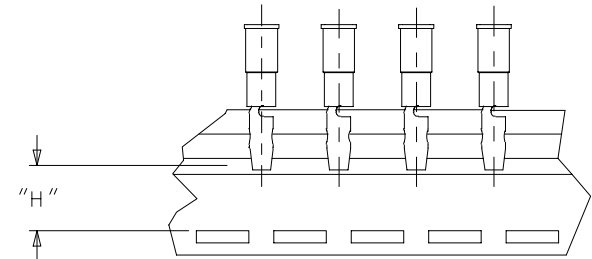
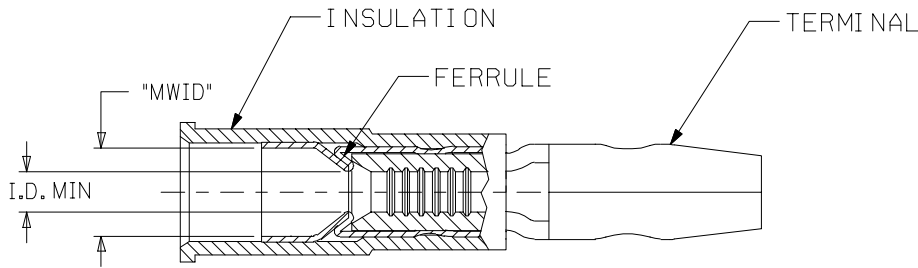
Email & Skype: info@chipsmall.com Web: www.chipsmall.com

Address: A1208, Overseas Decoration Building, #122 Zhenhua RD., Futian, Shenzhen, China

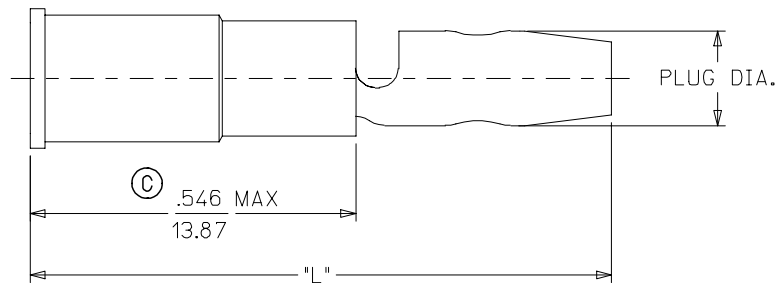


| LOOSE PIECE  |          | TAPE MOUNTED |          | WIRE RANGE<br>AWG | INSULATION<br>COLOR | I.D. MIN. | PLUG<br>DIA. | MAX<br>"L"  | "MWID"    | "H"<br>±.010/0.25 |
|--------------|----------|--------------|----------|-------------------|---------------------|-----------|--------------|-------------|-----------|-------------------|
| MATERIAL NO. | ENG. NO. | MATERIAL NO. | ENG. NO. |                   |                     |           |              |             |           |                   |
| 190350001    | A-559    | 190350002    | A-559T   | 18-22             | RED                 | .056/1.42 | .180/4.57    | 1.046/26.57 | .140/3.56 | .495/12.57        |
| 190350003    | A-569    | 190350004    | A-569T   | 18-22             | RED                 | .056/1.42 | .156/3.96    | .986/25.04  | .140/3.56 | .555/14.10        |
| 190350005    | B-579    | 190350008    | B-579T   | 14-16             | BLUE                | .084/2.13 | .180/4.57    | 1.046/26.57 | .170/4.32 | .495/12.57        |
| 190350009    | B-589    | 190350012    | B-589T   | 14-16             | BLUE                | .084/2.13 | .156/3.96    | .986/25.04  | .170/4.32 | .555/14.10        |

©



TAPE MOUNTING DETAIL



SALES DRAWING

NOTE:

1. TERMINAL: MATERIAL COPPER .032 MAX FINISH: ELECTRO-TIN.  
FERRULE : MATERIAL: BRASS FINISH: ELECTRO-TIN.  
INSULATION: NYLON.
2. MWID = MAXIMUM WIRE INSULATION DIAMETER.
3. ASSEMBLY IS ROHS COMPLIANT.

©

|   |   |   |   |  |
|---|---|---|---|--|
| CORRECTED DIM. & ADDED ROHS<br>EC NO: ETC2007-0397<br>DRW: NEHLE 2007/04/27<br>CHKD: JMACNEIL 2007/05/09<br>APPR: JMACNEIL 2007/05/10 | QUALITY SYMBOLS<br>▽=0<br>▽=0   | GENERAL TOLERANCES (UNLESS SPECIFIED)<br>mm INCH<br>4 PLACES ± --- ± ---<br>3 PLACES ± --- ± .005<br>2 PLACES ± 0.13 ± .01<br>1 PLACE ± 0.25 ± ---<br>ANGULAR ±1/2° | DIMENSION STYLE IN/MM<br>DRAWN BY DATE<br>BRE 2003/02/13<br>CHECKED BY DATE<br>HEB 2003/02/13<br>APPROVED BY DATE<br>RWD 2003/02/13 | SCALE ---<br>DESIGN UNITS INCH<br>THIRD ANGLE PROJECTION   |
|   | DRAFT WHERE APPLICABLE MUST REMAIN WITHIN DIMENSIONS  |   | MATERIAL NO. SEE CHART<br>SIZE B  | TITLE MALE BULLET SNAP PLUG, MOLDED, AVIKRIMP<br>MOLEX INCORPORATED<br>DOCUMENT NO. SD-19035-001<br>SHEET NO. 1 OF 1 |
|   | THIS DRAWING CONTAINS INFORMATION THAT IS PROPRIETARY TO MOLEX INCORPORATED AND SHOULD NOT BE USED WITHOUT WRITTEN PERMISSION |   |   |  |
|   | REV DESCRIPTION   |   |   |  |