



Chipsmall Limited consists of a professional team with an average of over 10 year of expertise in the distribution of electronic components. Based in Hongkong, we have already established firm and mutual-benefit business relationships with customers from,Europe,America and south Asia,supplying obsolete and hard-to-find components to meet their specific needs.

With the principle of "Quality Parts,Customers Priority,Honest Operation,and Considerate Service",our business mainly focus on the distribution of electronic components. Line cards we deal with include Microchip,ALPS,ROHM,Xilinx,Pulse,ON,Everlight and Freescale. Main products comprise IC,Modules,Potentiometer,IC Socket,Relay,Connector.Our parts cover such applications as commercial,industrial, and automotives areas.

We are looking forward to setting up business relationship with you and hope to provide you with the best service and solution. Let us make a better world for our industry!



Contact us

Tel: +86-755-8981 8866 Fax: +86-755-8427 6832

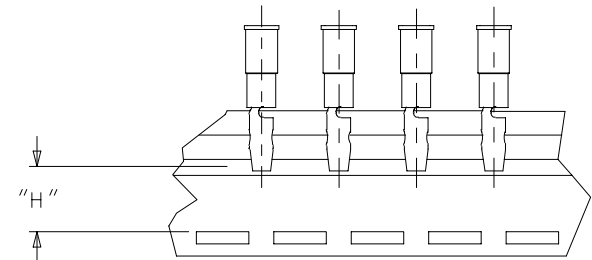
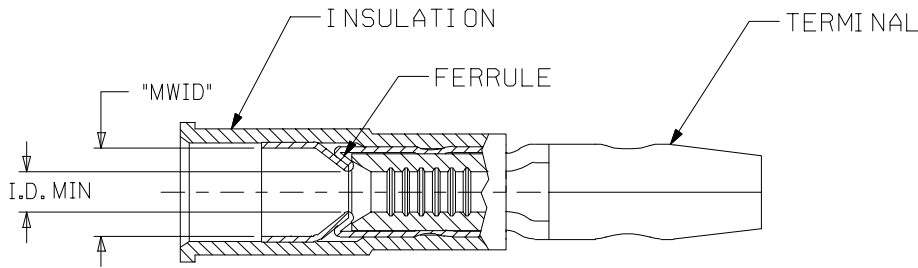
Email & Skype: info@chipsmall.com Web: www.chipsmall.com

Address: A1208, Overseas Decoration Building, #122 Zhenhua RD., Futian, Shenzhen, China

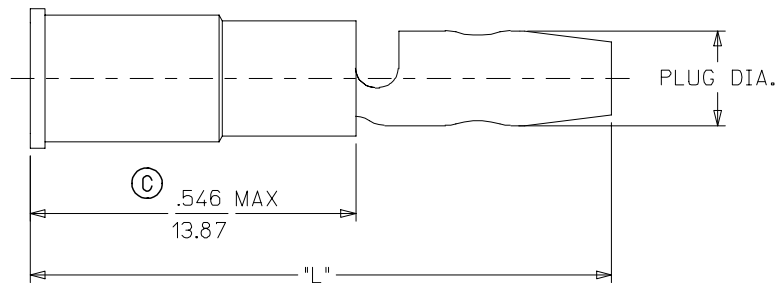


LOOSE PIECE		TAPE MOUNTED		WIRE RANGE AWG	INSULATION COLOR	I.D. MIN.	PLUG DIA.	MAX "L"	"MWID"	"H" ±.010/0.25
MATERIAL NO.	ENG. NO.	MATERIAL NO.	ENG. NO.							
190350001	A-559	190350002	A-559T	18-22	RED	.056/1.42	.180/4.57	1.046/26.57	.140/3.56	.495/12.57
190350003	A-569	190350004	A-569T	18-22	RED	.056/1.42	.156/3.96	.986/25.04	.140/3.56	.555/14.10
190350005	B-579	190350008	B-579T	14-16	BLUE	.084/2.13	.180/4.57	1.046/26.57	.170/4.32	.495/12.57
190350009	B-589	190350012	B-589T	14-16	BLUE	.084/2.13	.156/3.96	.986/25.04	.170/4.32	.555/14.10

©



TAPE MOUNTING DETAIL



SALES DRAWING

NOTE:

1. TERMINAL: MATERIAL COPPER .032 MAX FINISH: ELECTRO-TIN.
FERRULE : MATERIAL: BRASS FINISH: ELECTRO-TIN.
INSULATION: NYLON.
2. MWID = MAXIMUM WIRE INSULATION DIAMETER.
3. ASSEMBLY IS ROHS COMPLIANT.

©

CORRECTED DIM. & ADDED ROHS EC NO: ETC2007-0397 DRW: NEHLE 2007/04/27 CHKD: JMACNEIL 2007/05/09 APPR: JMACNEIL 2007/05/10	QUALITY SYMBOLS	GENERAL TOLERANCES (UNLESS SPECIFIED)	DIMENSION STYLE IN/MM	SCALE ---	DESIGN UNITS INCH	THIRD ANGLE PROJECTION																															
	▽=0 ▽=0	<table border="1"> <thead> <tr> <th></th> <th>mm</th> <th>INCH</th> </tr> </thead> <tbody> <tr> <td>4 PLACES</td> <td>± ---</td> <td>± ---</td> </tr> <tr> <td>3 PLACES</td> <td>± ---</td> <td>±.005</td> </tr> <tr> <td>2 PLACES</td> <td>± 0.13</td> <td>±.01</td> </tr> <tr> <td>1 PLACE</td> <td>± 0.25</td> <td>± ---</td> </tr> </tbody> </table>		mm	INCH	4 PLACES	± ---	± ---	3 PLACES	± ---	±.005	2 PLACES	± 0.13	±.01	1 PLACE	± 0.25	± ---	<table border="1"> <thead> <tr> <th>DRAWN BY</th> <th>DATE</th> <th>TITLE</th> </tr> </thead> <tbody> <tr> <td>BRE</td> <td>2003/02/13</td> <td rowspan="2">MALE BULLET SNAP PLUG, MOLDED, AVIKRIMP</td> </tr> <tr> <td>CHECKED BY</td> <td>DATE</td> </tr> <tr> <td>HEB</td> <td>2003/02/13</td> <td></td> </tr> </tbody> </table>	DRAWN BY	DATE	TITLE	BRE	2003/02/13	MALE BULLET SNAP PLUG, MOLDED, AVIKRIMP	CHECKED BY	DATE	HEB	2003/02/13		<table border="1"> <thead> <tr> <th>APPROVED BY</th> <th>DATE</th> </tr> </thead> <tbody> <tr> <td>RWD</td> <td>2003/02/13</td> </tr> </tbody> </table>	APPROVED BY	DATE	RWD	2003/02/13	MOLEX INCORPORATED		
		mm	INCH																																		
	4 PLACES	± ---	± ---																																		
3 PLACES	± ---	±.005																																			
2 PLACES	± 0.13	±.01																																			
1 PLACE	± 0.25	± ---																																			
DRAWN BY	DATE	TITLE																																			
BRE	2003/02/13	MALE BULLET SNAP PLUG, MOLDED, AVIKRIMP																																			
CHECKED BY	DATE																																				
HEB	2003/02/13																																				
APPROVED BY	DATE																																				
RWD	2003/02/13																																				
DRAFT WHERE APPLICABLE MUST REMAIN WITHIN DIMENSIONS	SEE CHART	MATERIAL NO. SD-19035-001	DOCUMENT NO.	SHEET NO. 1 OF 1																																	