



Chipsmall Limited consists of a professional team with an average of over 10 year of expertise in the distribution of electronic components. Based in Hongkong, we have already established firm and mutual-benefit business relationships with customers from,Europe,America and south Asia,supplying obsolete and hard-to-find components to meet their specific needs.

With the principle of “Quality Parts,Customers Priority,Honest Operation,and Considerate Service”,our business mainly focus on the distribution of electronic components. Line cards we deal with include Microchip,ALPS,ROHM,Xilinx,Pulse,ON,Everlight and Freescale. Main products comprise IC,Modules,Potentiometer,IC Socket,Relay,Connector.Our parts cover such applications as commercial,industrial, and automotives areas.

We are looking forward to setting up business relationship with you and hope to provide you with the best service and solution. Let us make a better world for our industry!



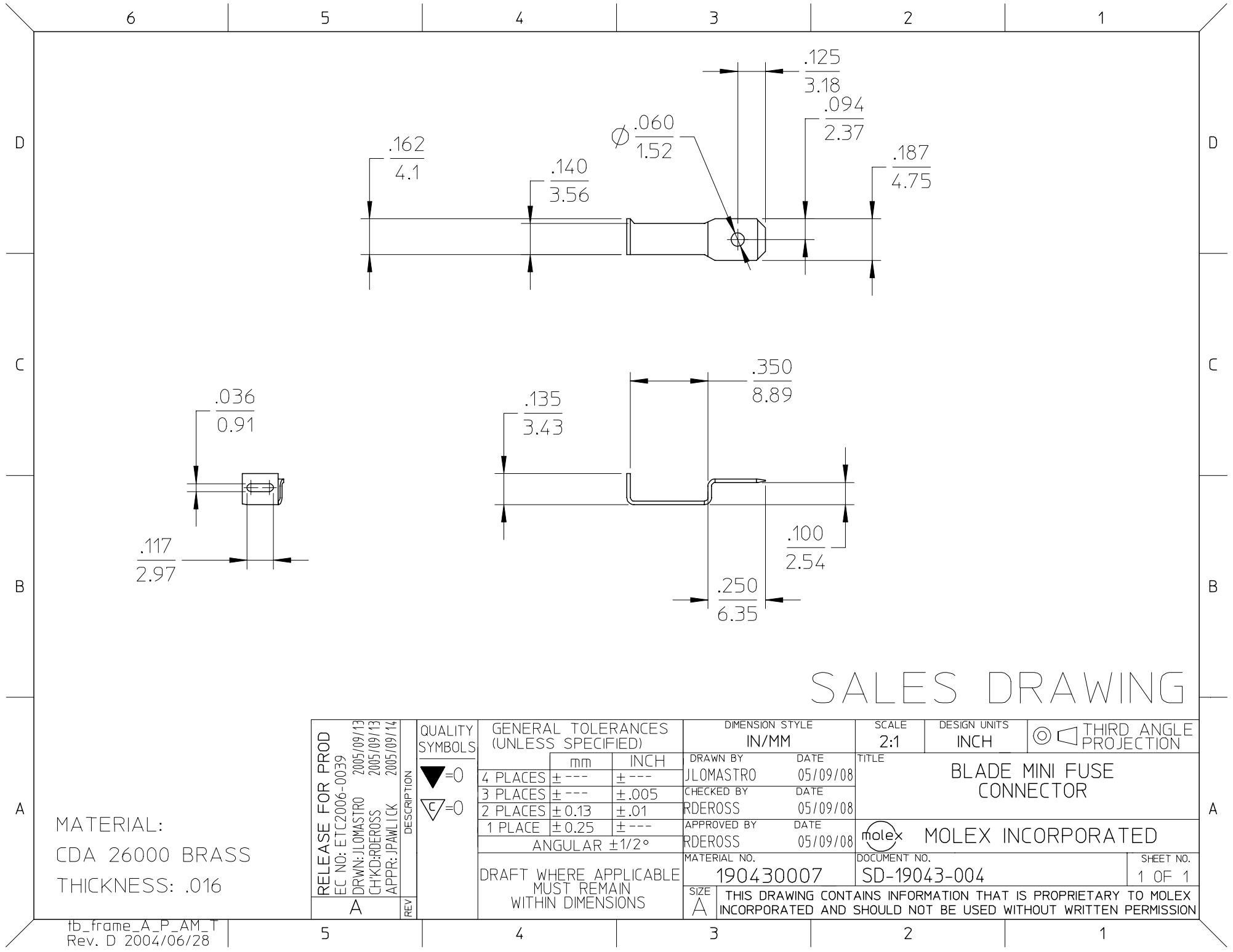
## Contact us

Tel: +86-755-8981 8866 Fax: +86-755-8427 6832

Email & Skype: [info@chipsmall.com](mailto:info@chipsmall.com) Web: [www.chipsmall.com](http://www.chipsmall.com)

Address: A1208, Overseas Decoration Building, #122 Zhenhua RD., Futian, Shenzhen, China





SALES DRAWING

MATERIAL:  
CDA 26000 BRASS  
THICKNESS: .016

RELEASE FOR PROD EC NO: ETC2006-0039 DRWN: JLOMASTRO 2005/09/13 CHKD: RDEROSS 2005/09/13 APPR: JPAWLICK 2005/09/14				DESCRIPTION REV	QUALITY SYMBOLS  ▽=0 ▽=0	GENERAL TOLERANCES (UNLESS SPECIFIED)			DIMENSION STYLE IN/MM		SCALE 2:1	DESIGN UNITS INCH	THIRD ANGLE PROJECTION	
			mm			INCH	DRAWN BY JLOMASTRO	DATE 05/09/08	TITLE BLADE MINI FUSE CONNECTOR					
							CHECKED BY RDEROSS	DATE 05/09/08						
			4 PLACES			± ---	± ---	MOLEX INCORPORATED						
			3 PLACES			± ---	± .005							
			2 PLACES			± 0.13	± .01	DOCUMENT NO. SD-19043-004						
			1 PLACE			± 0.25	± ---							
			ANGULAR ±1/2°			APPROVED BY RDEROSS		DATE 05/09/08	SHEET NO. 1 OF 1					
			DRAFT WHERE APPLICABLE MUST REMAIN WITHIN DIMENSIONS											
A						MATERIAL NO. 190430007								
						SIZE A	THIS DRAWING CONTAINS INFORMATION THAT IS PROPRIETARY TO MOLEX INCORPORATED AND SHOULD NOT BE USED WITHOUT WRITTEN PERMISSION							