



Chipsmall Limited consists of a professional team with an average of over 10 year of expertise in the distribution of electronic components. Based in Hongkong, we have already established firm and mutual-benefit business relationships with customers from,Europe,America and south Asia,supplying obsolete and hard-to-find components to meet their specific needs.

With the principle of “Quality Parts,Customers Priority,Honest Operation,and Considerate Service”,our business mainly focus on the distribution of electronic components. Line cards we deal with include Microchip,ALPS,ROHM,Xilinx,Pulse,ON,Everlight and Freescale. Main products comprise IC,Modules,Potentiometer,IC Socket,Relay,Connector.Our parts cover such applications as commercial,industrial, and automotives areas.

We are looking forward to setting up business relationship with you and hope to provide you with the best service and solution. Let us make a better world for our industry!



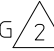
## Contact us

Tel: +86-755-8981 8866 Fax: +86-755-8427 6832

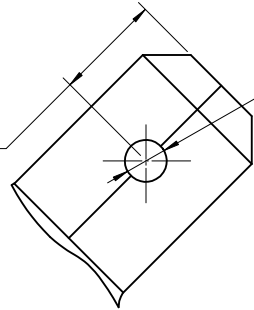
Email & Skype: info@chipsmall.com Web: www.chipsmall.com


Address: A1208, Overseas Decoration Building, #122 Zhenhua RD., Futian, Shenzhen, China

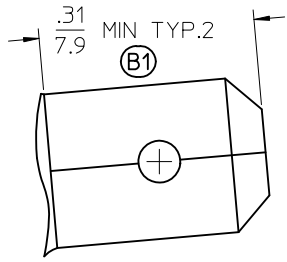
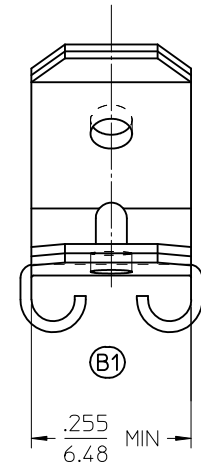
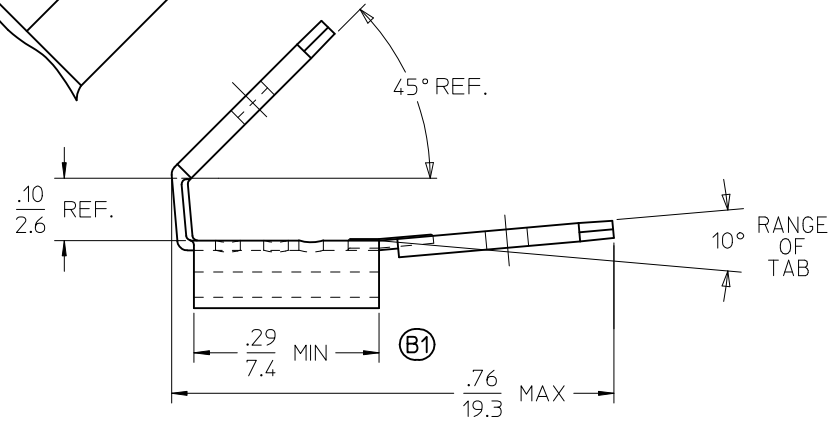


MATERIAL NUMBER	ENGINEERING NUMBER	PLATING 
190430010	VWA-0	NONE
190430027	VWA-0-1	ELECTRO-TIN
190430028	VWA-0-HT	ELECTRO-NICKEL

  $\frac{.186}{4.72}$  MAX TYP.2




  $\phi .063$  MIN  
1.60 TYP.2



SALES DRAWING

NOTE:

1. MATERIAL: BRASS, .015 THICK REF.
-  2. PLATING SEE CHART.

<b>REVISIONS</b> RLS IN ME10, MOD TOLRNCS EC NO: WNA2011-0262 DRW: HETHRODAHL 2009/07/28 CHKD: JMACNEIL 2010/11/16 APPR: JMACNEIL 2010/12/06 REV DESCRIPTION	QUALITY SYMBOLS	<b>GENERAL TOLERANCES (UNLESS SPECIFIED)</b> <table border="1"> <thead> <tr> <th></th> <th>mm</th> <th>INCH</th> </tr> </thead> <tbody> <tr> <td>4 PLACES</td> <td>± .005</td> <td>± .0005</td> </tr> <tr> <td>3 PLACES</td> <td>± .005</td> <td>± .0005</td> </tr> <tr> <td>2 PLACES</td> <td>± 0.13</td> <td>± .01</td> </tr> <tr> <td>1 PLACE</td> <td>± 0.25</td> <td>± .01</td> </tr> <tr> <td colspan="3">ANGULAR ± 20°</td> </tr> </tbody> </table>		mm	INCH	4 PLACES	± .005	± .0005	3 PLACES	± .005	± .0005	2 PLACES	± 0.13	± .01	1 PLACE	± 0.25	± .01	ANGULAR ± 20°			DIMENSION STYLE	SCALE	DESIGN UNITS	THIRD ANGLE PROJECTION
			mm	INCH																				
	4 PLACES		± .005	± .0005																				
	3 PLACES		± .005	± .0005																				
	2 PLACES		± 0.13	± .01																				
	1 PLACE		± 0.25	± .01																				
ANGULAR ± 20°																								
	IN/MM	5:1	INCH																					
	DRAWN BY	DATE	TITLE																					
	BRE	2002/05/01	3 WAY CONNECTOR 2 MALE TABS, 1 FEMALE .250X.032 QUICK DISCONN																					
	CHECKED BY	DATE	MOLEX INCORPORATED																					
	HEB	2002/05/01	MATERIAL NO. SD-19043-003																					
	APPROVED BY	DATE	DOCUMENT NO. 1 OF 1																					
	JMACNEIL	2010/12/06	SHEET NO.																					
			1 OF 1																					
			THIS DRAWING CONTAINS INFORMATION THAT IS PROPRIETARY TO MOLEX INCORPORATED AND SHOULD NOT BE USED WITHOUT WRITTEN PERMISSION																					