



Chipsmall Limited consists of a professional team with an average of over 10 year of expertise in the distribution of electronic components. Based in Hongkong, we have already established firm and mutual-benefit business relationships with customers from,Europe,America and south Asia,supplying obsolete and hard-to-find components to meet their specific needs.

With the principle of “Quality Parts,Customers Priority,Honest Operation,and Considerate Service”,our business mainly focus on the distribution of electronic components. Line cards we deal with include Microchip,ALPS,ROHM,Xilinx,Pulse,ON,Everlight and Freescale. Main products comprise IC,Modules,Potentiometer,IC Socket,Relay,Connector.Our parts cover such applications as commercial,industrial, and automotives areas.

We are looking forward to setting up business relationship with you and hope to provide you with the best service and solution. Let us make a better world for our industry!



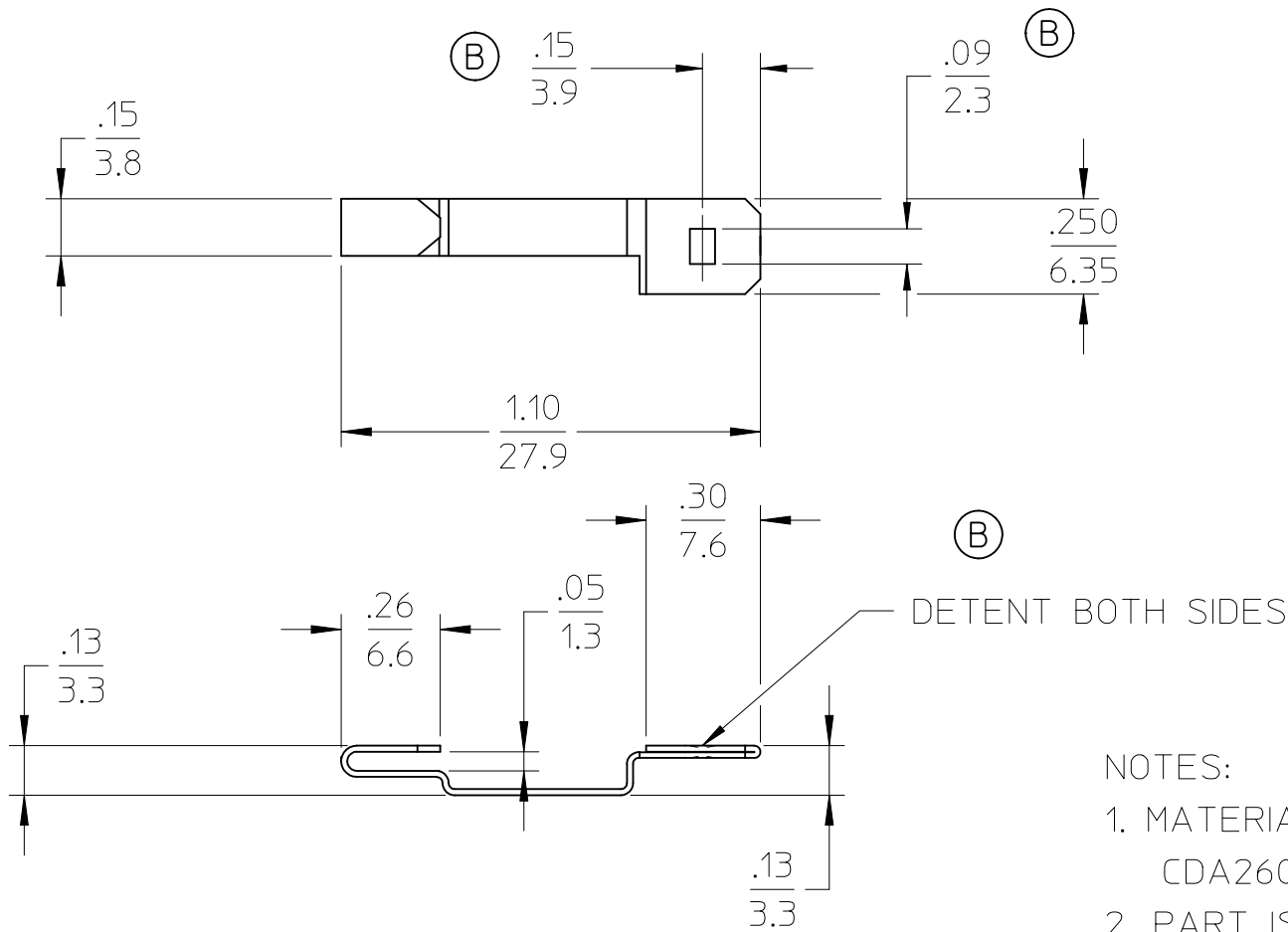
Contact us

Tel: +86-755-8981 8866 Fax: +86-755-8427 6832

Email & Skype: info@chipsmall.com Web: www.chipsmall.com

Address: A1208, Overseas Decoration Building, #122 Zhenhua RD., Futian, Shenzhen, China





NOTES:

1. MATERIAL:
CDA26000 BRASS, .016 THICK
2. PART IS ROHS COMPLIANT.

SALES DRAWING

CHANGE DIMPLE EC NO: WNA2010-0791 DRWN:ETHRODAHL 2010/06/22 CHKD:JMACNEIL 2010/06/23 APPR:JMACNEIL 2010/06/30	QUALITY SYMBOLS ▽=0 ◻=0	GENERAL TOLERANCES (UNLESS SPECIFIED)		DIMENSION STYLE IN/MM		SCALE 2:1	DESIGN UNITS INCH	THIRD ANGLE PROJECTION	
			mm	INCH	DRAWN BY JLOMASTRO	DATE 05/09/08	TITLE FUSE TAP ADAPTER FTA-1		
		4 PLACES	± ---	± ---	CHECKED BY RDEROSS	DATE 05/09/08			
		3 PLACES	± ---	± .005	APPROVED BY RDEROSS	DATE 05/09/08	MOLEX INCORPORATED		
2 PLACES	± 0.13	± .01	ANGULAR ±1/2°		MATERIAL NO. 190430011	DOCUMENT NO. SD-19043-005	SHEET NO. 1 OF 1		
1 PLACE	± 0.25	± ---	DRAFT WHERE APPLICABLE MUST REMAIN WITHIN DIMENSIONS		SIZE A	THIS DRAWING CONTAINS INFORMATION THAT IS PROPRIETARY TO MOLEX INCORPORATED AND SHOULD NOT BE USED WITHOUT WRITTEN PERMISSION			