



Chipsmall Limited consists of a professional team with an average of over 10 year of expertise in the distribution of electronic components. Based in Hongkong, we have already established firm and mutual-benefit business relationships with customers from,Europe,America and south Asia,supplying obsolete and hard-to-find components to meet their specific needs.

With the principle of “Quality Parts,Customers Priority,Honest Operation,and Considerate Service”,our business mainly focus on the distribution of electronic components. Line cards we deal with include Microchip,ALPS,ROHM,Xilinx,Pulse,ON,Everlight and Freescale. Main products comprise IC,Modules,Potentiometer,IC Socket,Relay,Connector.Our parts cover such applications as commercial,industrial, and automotives areas.

We are looking forward to setting up business relationship with you and hope to provide you with the best service and solution. Let us make a better world for our industry!



## Contact us

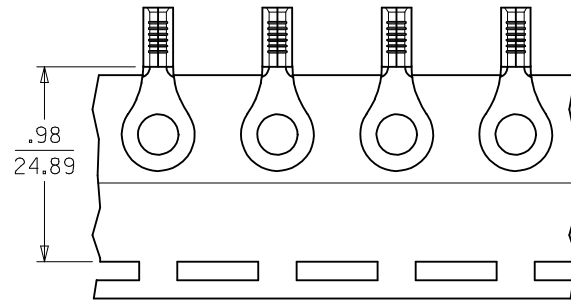
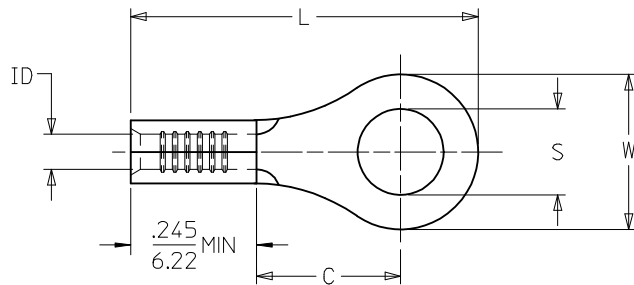
Tel: +86-755-8981 8866 Fax: +86-755-8427 6832

Email & Skype: info@chipsmall.com Web: www.chipsmall.com

Address: A1208, Overseas Decoration Building, #122 Zhenhua RD., Futian, Shenzhen, China



LOOSE PIECE		TAPE MOUNTED		SPECIFICATIONS							
MATERIAL NUMBER	ALTERNATE NUMBER	MATERIAL NUMBER	ALTERNATE NUMBER	STUD SIZE	"S" ±.005/(0.13)	"W" ±.010/(0.25)	"C" MIN.	"L" MAX.	"ID" MIN.	STOCK THICKNESS	
F	I90440063	A-120-02	I90440001	A-120-02T	2	.094/(2.39)	.225/(5.72)	.157/(3.99)	.563/(14.30)	.062/(1.57)	.028/(.71)
	I90440064	A-120-04	I90440065	A-120-04T	4	.119/(3.02)	.225/(5.72)	.157/(3.99)	.563/(14.30)	.062/(1.57)	.028/(.71)
	I90440066	A-120-06	I90440067	A-120-06T	6	.146/(3.71)	.225/(5.72)	.157/(3.99)	.563/(14.30)	.062/(1.57)	.028/(.71)
	I90440068	A-121-06	I90440003	A-121-06T	6	.146/(3.71)	.312/(7.92)	.270/(6.86)	.720/(18.29)	.062/(1.57)	.028/(.71)
	I90440069	A-121-08	I90440071	A-121-08T	8	.173/(4.39)	.312/(7.92)	.270/(6.86)	.720/(18.29)	.062/(1.57)	.028/(.71)
	I90440072	A-121-10	I90440073	A-121-10T	10	.198/(5.03)	.312/(7.92)	.270/(6.86)	.720/(18.29)	.062/(1.57)	.028/(.71)
	I90440074	A-122-10	I90440004	A-122-10T	10	.198/(5.03)	.467/(11.86)	.386/(9.80)	.914/(23.22)	.062/(1.57)	.028/(.71)
E	I90440075	A-122-14	I90440076	A-122-14T	1/4	.265/(6.73) (C2)	.467/(11.86)	.386/(9.80)	.914/(23.22)	.062/(1.57)	.028/(.71)
	I90440077	A-122-56	I90440005	A-122-56T	5/16	.328/(8.33)	.467/(11.86)	.386/(9.80)	.914/(23.22)	.062/(1.57)	.028/(.71)
	I90440078	A-126-10	I90440006	A-126-10T	10	.198/(5.03)	.534/(13.56)	.552/(14.02)	1.113/(28.27)	.054/(1.37)	.031/(.79)
	I90440079	A-126-14	I90440080	A-126-14T	1/4	.265/(6.73) (C2)	.534/(13.56)	.552/(14.02)	1.113/(28.27)	.054/(1.37)	.031/(.79)
	I90440082	A-126-56	I90440008	A-126-56T	5/16	.328/(8.33)	.534/(13.56)	.552/(14.02)	1.113/(28.27)	.054/(1.37)	.031/(.79)
	I90440081	A-126-38	I90440007	A-126-38T	3/8	.390/(9.91)	.534/(13.56)	.552/(14.02)	1.113/(28.27)	.054/(1.37)	.031/(.79)
D	I90440083	A-132-04	I90440009	A-132-04T	4	.126/(3.20)	.256/(6.45)	.240/(6.10)	.661/(16.69)	.062/(1.57)	.028/(.71)
	I90440084	A-132-06	I90440085	A-132-06T	6	.146/(3.71)	.256/(6.45)	.240/(6.10)	.661/(16.69)	.062/(1.57)	.028/(.71)
	I90440086	A-132-08	I90440087	A-132-08T	8	.146/(3.71)	.256/(6.45)	.240/(6.10)	.661/(16.69)	.062/(1.57)	.028/(.71)



PARTS ON TAPE

CUSTOMER DRAWING

- NOTES:  
 1. MATERIAL: COPPER.  
 2. PLATING: ELECTRO-TIN.  
 3. ALL DIMENSIONS IN INCHES/(MM).  
 4. PARTS ARE ROHS COMPLIANT.

CORRECTED 1/4 STUD EC NO: I902015-1639 DRAWING: JAS01 2015/05/01 CHKD: JMAGNEIL 2015/05/01 APPR: JMAGNEIL 2015/05/12 C2	QUALITY SYMBOLS ▽=0 ▽=0	GENERAL TOLERANCES (UNLESS SPECIFIED) mm INCH 4 PLACES ± --- ± --- 3 PLACES ± --- ± .005 2 PLACES ± 0.13 ± .01 1 PLACE ± 0.25 ± --- ANGULAR ± ---°	DIMENSION STYLE IN/MM DRAWN BY DATE HEB 1999/10/27 CHECKED BY DATE RWD 1999/10/27 APPROVED BY DATE	SCALE --- DESIGN UNITS INCH THIRD ANGLE PROJECTION	TITLE RING TONGUE TERMINAL 22-18 AWG KRIMPTITE, 100 SERIES
	MATERIAL NO. SEE CHART	DOCUMENT NO. SD-19044-001	SHEET NO. 1 OF 1		
	DRAFT WHERE APPLICABLE MUST REMAIN WITHIN DIMENSIONS				
	THIS DRAWING CONTAINS INFORMATION THAT IS PROPRIETARY TO MOLEX INCORPORATED AND SHOULD NOT BE USED WITHOUT WRITTEN PERMISSION				