



Chipsmall Limited consists of a professional team with an average of over 10 year of expertise in the distribution of electronic components. Based in Hongkong, we have already established firm and mutual-benefit business relationships with customers from,Europe,America and south Asia,supplying obsolete and hard-to-find components to meet their specific needs.

With the principle of “Quality Parts,Customers Priority,Honest Operation,and Considerate Service”,our business mainly focus on the distribution of electronic components. Line cards we deal with include Microchip,ALPS,ROHM,Xilinx,Pulse,ON,Everlight and Freescale. Main products comprise IC,Modules,Potentiometer,IC Socket,Relay,Connector.Our parts cover such applications as commercial,industrial, and automotives areas.

We are looking forward to setting up business relationship with you and hope to provide you with the best service and solution. Let us make a better world for our industry!



## Contact us

Tel: +86-755-8981 8866 Fax: +86-755-8427 6832

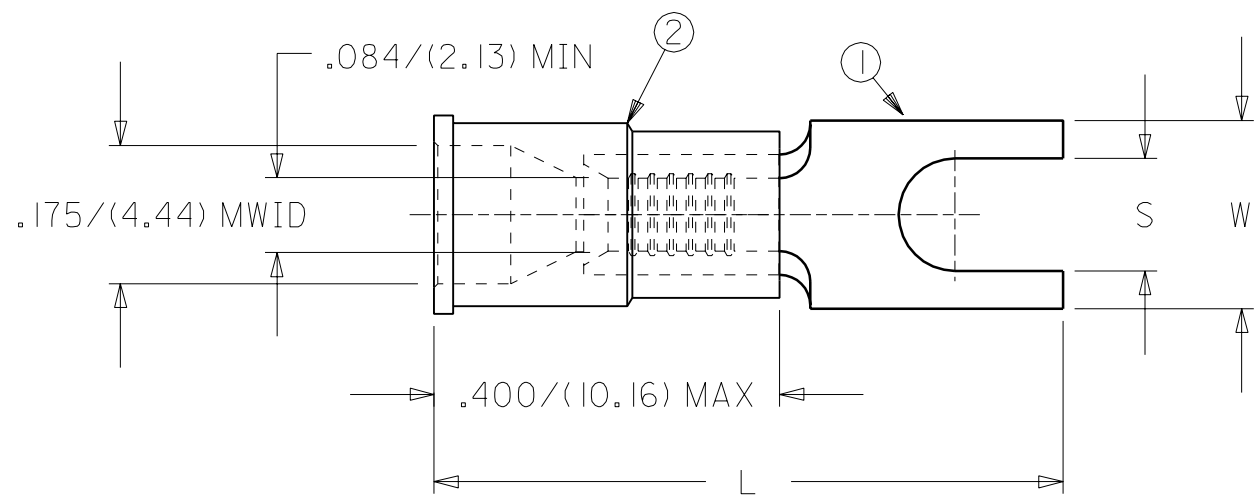
Email & Skype: info@chipsmall.com Web: www.chipsmall.com

Address: A1208, Overseas Decoration Building, #122 Zhenhua RD., Futian, Shenzhen, China



PART NUMBER	STUD SIZE	"W" ±.010/(0.25)	"L" MAX	"S" ±.005/(0.13)
BB-2781-04X	04	.295/(7.49)	.781/(19.8)	.119/(3.02)
BB-2781-06X	06	.295/(7.49)	.781/(19.8)	.146/(3.71)
BB-2781-08X	08	.295/(7.49)	.781/(19.8)	.173/(4.39)
BB-2781-10X	10	.295/(7.49)	.781/(19.8)	.198/(5.03)

DRWG. NO. SD-19200-1001



A	RELEASE CUSTOMER DRAWING ET80481 10/02 DAY
LTR.	REVISIONS

CUSTOMER DRAWING

- NOTES:
- MATERIAL: COPPER  
STOCK THICKNESS:  $.031 \pm .003 / (0.79 \pm 0.08)$   
PLATING: ELECTRO-TIN
  - INSULATION: PVC (BLUE)
  - MWID=MAXIMUM WIRE INSULATION DIAMETER
  - ALL DIMENSIONS=INCHES/(METRIC)

DIMENSIONS SHOWN (METRIC) INCH			
UNLESS OTHERWISE SPECIFIED TOLERANCES: ANGULAR $\pm 1/2^\circ$			
	INCH	METRIC	
3 PLACE	$\pm .005$	$\pm \text{---}$	
2 PLACE	$\pm .01$	$\pm 0.13$	
1 PLACE	$\pm \text{---}$	$\pm 0.25$	

DRAFT WHERE APPLICABLE MUST REMAIN WITHIN DIMENSIONS

DRWG. BY	DAY	CHK'D. BY	RWD
APP'D. BY	RWD	SCALE	NO:NE

REVISE ONLY ON CAD SYSTEM			
TITLE			
SPADE TONGUE TERMINAL INSULKRIMP (BLOCK) 16-14 AWG/(1.0-2.5 mm <sup>2</sup> )			
molex ETC INC. PINELLAS PARK, FLA. 33781 U.S.A.		SHEET NO.	DATE
PART NO. SEE CHART		DRWG. NO.	SD-19200-1001
FILE NAME 92001001.CST	THIS DRAWING CONTAINS INFORMATION THAT IS PROPRIETARY TO MOLEX-ETC INC. AND SHOULD NOT BE USED WITHOUT WRITTEN PERMISSION.		DIV. SIZE A