



Chipsmall Limited consists of a professional team with an average of over 10 year of expertise in the distribution of electronic components. Based in Hongkong, we have already established firm and mutual-benefit business relationships with customers from,Europe,America and south Asia,supplying obsolete and hard-to-find components to meet their specific needs.

With the principle of “Quality Parts,Customers Priority,Honest Operation,and Considerate Service”,our business mainly focus on the distribution of electronic components. Line cards we deal with include Microchip,ALPS,ROHM,Xilinx,Pulse,ON,Everlight and Freescale. Main products comprise IC,Modules,Potentiometer,IC Socket,Relay,Connector.Our parts cover such applications as commercial,industrial, and automotives areas.

We are looking forward to setting up business relationship with you and hope to provide you with the best service and solution. Let us make a better world for our industry!



Contact us

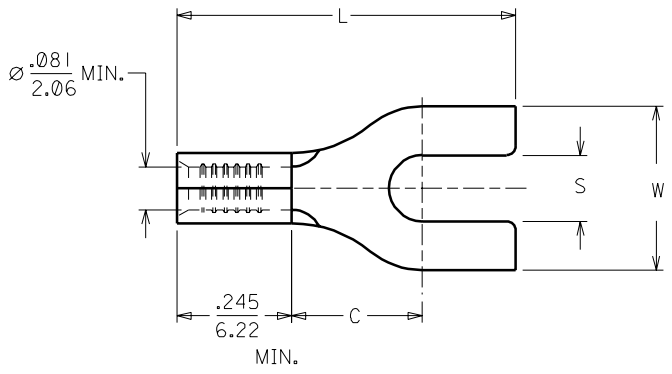
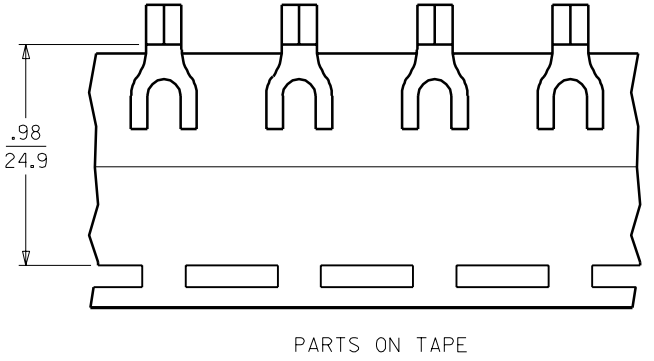
Tel: +86-755-8981 8866 Fax: +86-755-8427 6832

Email & Skype: info@chipsmall.com Web: www.chipsmall.com

Address: A1208, Overseas Decoration Building, #122 Zhenhua RD., Futian, Shenzhen, China



	10	9	8	7	6	5	4	3	2	1	
	MATERIAL NUMBER	ALTERNATE NUMBER	STUD SIZE	"S" ±.005/(0.13)	"W" ±.010/(0.25)	"C"	"L"	PACKAGING			
F	191400085	B-107-04	4	.119/(3.02)	.245/(6.22)	.209/(5.31)	.638/(16.21)	LOOSE PIECE			
	191400086	B-107-06	6	.146/(3.71)	.245/(6.22)	.209/(5.31)	.638/(16.21)				
	191400087	B-124-04	4	.119/(3.02)	.295/(7.49)	.211/(5.36)	.635/(16.13)				
	191400088	B-124-06	6	.146/(3.71)	.295/(7.49)	.211/(5.36)	.635/(16.13)				
	191400089	B-124-08	8	.173/(4.39)	.295/(7.49)	.211/(5.36)	.635/(16.13)				
	191400090	B-127-06	6	.146/(3.71)	.362/(9.19)	.269/(6.83)	.770/(19.56)				
	191400091	B-127-08	8	.173/(4.39)	.388/(9.85)	.269/(6.83)	.770/(19.56)				
	191400093	B-127-10	10	.198/(5.03)	.388/(9.85)	.269/(6.83)	.770/(19.56)				
E	191400129	B-107-04T	4	.119/(3.02)	.245/(6.22)	.209/(5.31)	.638/(16.21)		TAPE MOUNTED		
	191400130	B-107-06T	6	.146/(3.71)	.245/(6.22)	.209/(5.31)	.638/(16.21)				
	191400132	B-124-04T	4	.119/(3.02)	.295/(7.49)	.211/(5.36)	.635/(16.13)				
	191400133	B-124-06T	6	.146/(3.71)	.295/(7.49)	.211/(5.36)	.635/(16.13)				
	191400134	B-124-08T	8	.173/(4.39)	.295/(7.49)	.211/(5.36)	.635/(16.13)				
	191400135	B-127-06T	6	.146/(3.71)	.362/(9.19)	.269/(6.83)	.770/(19.56)				
	191400092	B-127-08T	8	.173/(4.39)	.388/(9.85)	.269/(6.83)	.770/(19.56)				
	191400094	B-127-10T	10	.198/(5.03)	.388/(9.85)	.269/(6.83)	.770/(19.56)				



NOTES:
 1. MATERIAL: COPPER .031/(.79) THICK.
 2. PLATING: ELECTRO-TIN.
 3. ALL DIMENSIONS IN INCHES/(MM).

CUSTOMER DRAWING

A	VOIDS: B-CD-103-02 ETC 1999-0055 1999/11/12 HEB
LTR.	REVISIONS

DIMENSIONS SHOWN (METRIC) INCH UNLESS OTHERWISE SPECIFIED TOLERANCES: ANGULAR ± 1/2°		REVISE ONLY ON CAD SYSTEM													
<table border="1"> <thead> <tr> <th></th> <th>INCH</th> <th>METRIC</th> </tr> </thead> <tbody> <tr> <td>3 PLACE</td> <td>± .005</td> <td>± ---</td> </tr> <tr> <td>2 PLACE</td> <td>± .01</td> <td>± 0.13</td> </tr> <tr> <td>1 PLACE</td> <td>± ---</td> <td>± 0.25</td> </tr> </tbody> </table>			INCH	METRIC	3 PLACE	± .005	± ---	2 PLACE	± .01	± 0.13	1 PLACE	± ---	± 0.25	TITLE SPADE TONGUE TERMINAL 16-14 AWG KRIMPTITE, 100-SERIES	
	INCH	METRIC													
3 PLACE	± .005	± ---													
2 PLACE	± .01	± 0.13													
1 PLACE	± ---	± 0.25													
DRAFT WHERE APPLICABLE MUST REMAIN WITHIN DIMENSIONS		SHEET NO. DATE 1 OF 1 99/11/12													
DRWG. BY: HEB APP'D. BY: RWD		PART NO. DRWG. NO. SEE TABLE SD-19140-001													
CHK'D. BY: RWD SCALE: 4: 1		FILE NAME: 19140001.DGN THIS DRAWING CONTAINS INFORMATION THAT IS PROPRIETARY TO MOLEX-ETC INC. AND SHOULD NOT BE USED WITHOUT WRITTEN PERMISSION.													
		DIV. SIZE ET B													