



Chipsmall Limited consists of a professional team with an average of over 10 year of expertise in the distribution of electronic components. Based in Hongkong, we have already established firm and mutual-benefit business relationships with customers from,Europe,America and south Asia,supplying obsolete and hard-to-find components to meet their specific needs.

With the principle of “Quality Parts,Customers Priority,Honest Operation,and Considerate Service”,our business mainly focus on the distribution of electronic components. Line cards we deal with include Microchip,ALPS,ROHM,Xilinx,Pulse,ON,Everlight and Freescale. Main products comprise IC,Modules,Potentiometer,IC Socket,Relay,Connector.Our parts cover such applications as commercial,industrial, and automotives areas.

We are looking forward to setting up business relationship with you and hope to provide you with the best service and solution. Let us make a better world for our industry!



Contact us

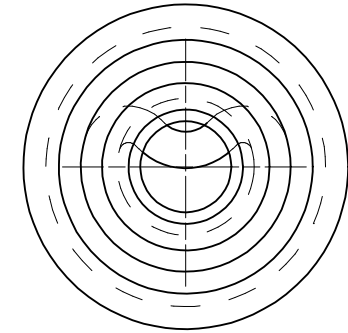
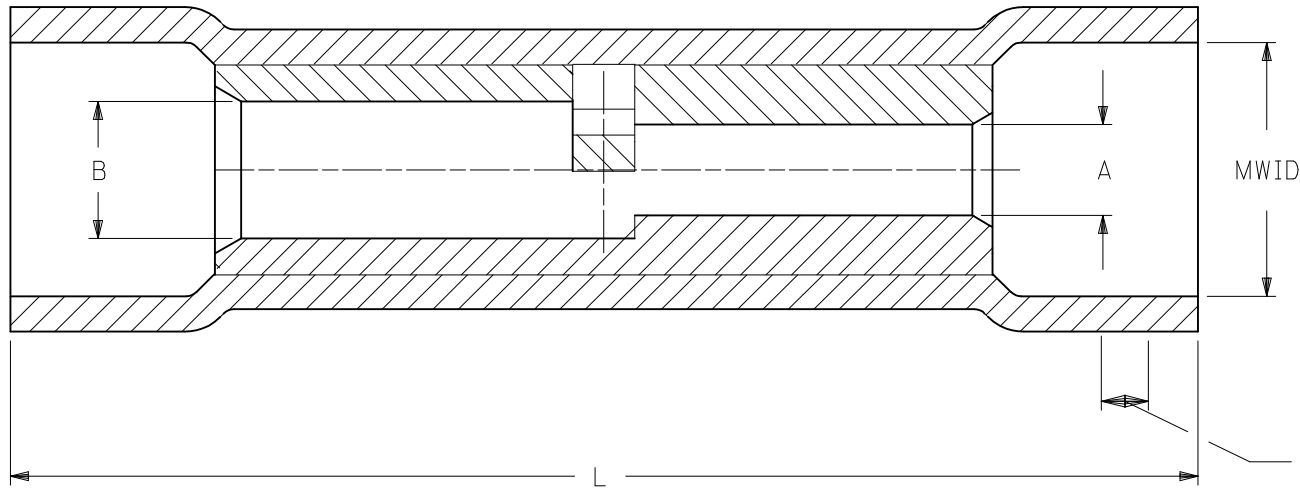
Tel: +86-755-8981 8866 Fax: +86-755-8427 6832

Email & Skype: info@chipsmall.com Web: www.chipsmall.com

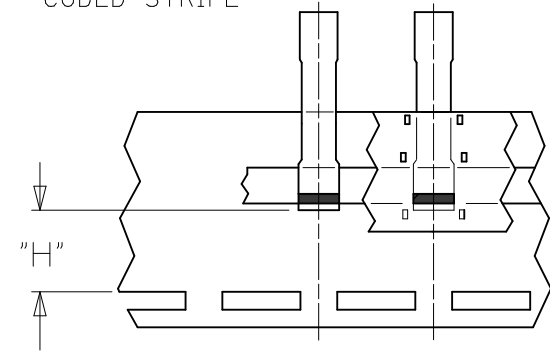
Address: A1208, Overseas Decoration Building, #122 Zhenhua RD., Futian, Shenzhen, China



6		5		4		3		2		1		
LOOSE PIECE		(A1) TAPE MOUNTED		INSULATION	CODE STRIPE	"A"		"B"		MWID	"L" MAX.	"H"
MATERIAL NO.	ENG'G P/N	MATERIAL NO.	ENG'G P/N	COLOR (REF)	COLOR (REF)	AWG.	MIN. DIA.	AWG.	MIN. DIA.			±.03/0.8
191540022	BA-63IX	191540057	BA-63IXT	BLUE	RED	22-18	.065 / 1.65	16-14	.088 / 2.24	.17 / 4.3	1.08 / 27.4	.42 / 10.7
191540035	CB-646X	191540036	CB-646XT	YELLOW	BLUE	16-14	.091 / 2.31	12-10	.137 / 3.48	.26 / 6.6	1.30 / 33.0	.35 / 8.9
191540044	DC-654X	191540043	DC-654XT	RED	YELLOW	12-10	.138 / 3.50	#8	.165 / 4.19	.33 / 8.4	1.50 / 38.1	-
191540047	ED-662X	-		BLUE	RED	#8	.175 / 4.44	#6	.222 / 5.64	.43 / 10.9	1.84 / 46.7	-



APPROXIMATE
LOCATION OF COLOR
CODED STRIPE



PARTS ON TAPE

NOTES:

- MATERIALS:
 SPLICE: MATTE-TIN PLATED COPPER
 INSULATION: PVC, COLOR PER CHART
- MWID = MAXIMUM WIRE INSULATION WIRE DIAMETER
- PARTS ARE ROHS COMPLIANT.

SALES DRAWING

REDRAWN FROM DOC CD-21001

ADD MAT'L NUMBER EC NO: WNA2011-0305 DRWN: GROSAS01 2013/03/01 CHKD: APPR: JMACNEIL 2013/04/24 DESCRIPTION REV	QUALITY SYMBOLS	GENERAL TOLERANCES (UNLESS SPECIFIED)		DIMENSION STYLE IN/MM		SCALE ---	DESIGN UNITS INCH	THIRD ANGLE PROJECTION	
	▼=0 ∇=0	4 PLACES	± ---	± ---	mm	INCH	DRAWN BY RCM	DATE 1991/10/28	TITLE STEP DOWN BUTT SPLICE INSULKRIMP
		3 PLACES	± ---	± ---			CHECKED BY	DATE	
		2 PLACES	± ---	± ---			APPROVED BY JMACNEIL	DATE 2011/04/27	MATERIAL NO. SEE CHART
		1 PLACE	± ---	± ---				MOLEX INCORPORATED	
		ANGULAR ± ---°		DRAFT WHERE APPLICABLE MUST REMAIN WITHIN DIMENSIONS		DOCUMENT NO. SD-19154-007		SHEET NO. 1 OF 1	