



Chipsmall Limited consists of a professional team with an average of over 10 year of expertise in the distribution of electronic components. Based in Hongkong, we have already established firm and mutual-benefit business relationships with customers from,Europe,America and south Asia,supplying obsolete and hard-to-find components to meet their specific needs.

With the principle of “Quality Parts,Customers Priority,Honest Operation,and Considerate Service”,our business mainly focus on the distribution of electronic components. Line cards we deal with include Microchip,ALPS,ROHM,Xilinx,Pulse,ON,Everlight and Freescale. Main products comprise IC,Modules,Potentiometer,IC Socket,Relay,Connector.Our parts cover such applications as commercial,industrial, and automotives areas.

We are looking forward to setting up business relationship with you and hope to provide you with the best service and solution. Let us make a better world for our industry!



Contact us

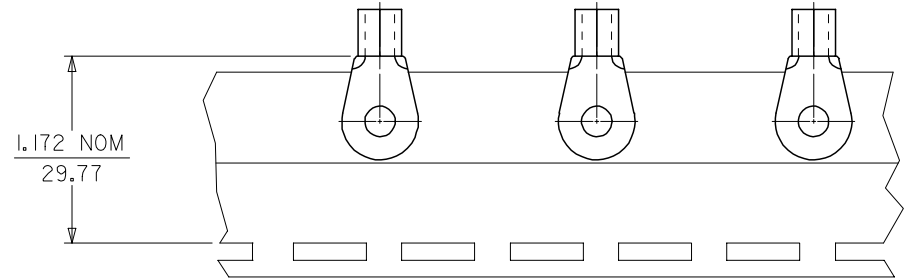
Tel: +86-755-8981 8866 Fax: +86-755-8427 6832

Email & Skype: info@chipsmall.com Web: www.chipsmall.com

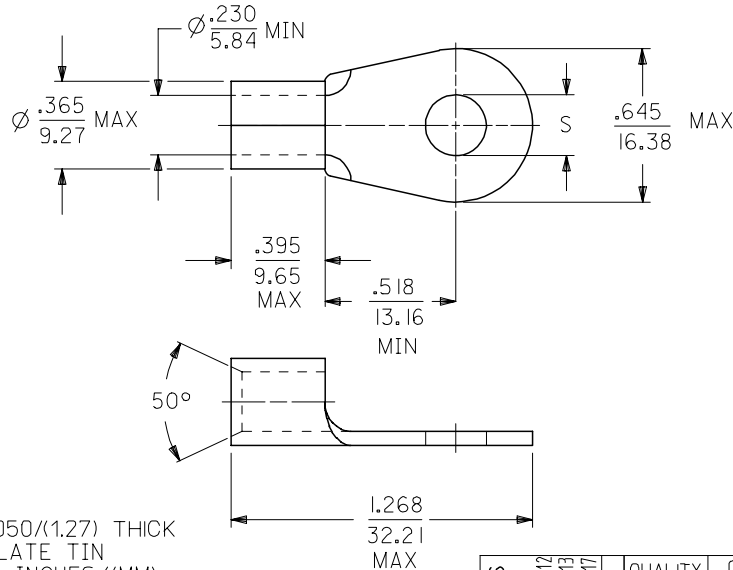
Address: A1208, Overseas Decoration Building, #122 Zhenhua RD., Futian, Shenzhen, China



| MATERIAL NUMBER | ENGINEERING NUMBER | STUD SIZE | "S" | PACKAGING |
|-----------------|--------------------|-----------|--------------|-----------------|
| 191930206 | E-357-08 | 8 | .173/(4.39) | LOOSE PIECE |
| 191930209 | E-357-10 | 10 | .198/(5.02) | |
| 191930212 | E-357-14 | 1/4 | .265/(6.73) | |
| 191930219 | E-357-56 | 5/16 | .328/(8.33) | |
| 191930216 | E-357-38 | 3/8 | .390/(9.90) | |
| 191930223 | E-357-76 | 7/16 | .453/(11.50) | TAPE MOUNTED |
| 191930208 | E-357-08T | 8 | .173/(4.39) | |
| 191930211 | E-357-10T | 10 | .198/(5.02) | |
| 191930215 | E-357-14T | 1/4 | .265/(6.73) | |
| 191930222 | E-357-56T | 5/16 | .328/(8.33) | |
| 191930218 | E-357-38T | 3/8 | .390/(9.90) | |
| 191930224 | E-357-76T | 7/16 | .453/(11.50) | |



PARTS ON TAPE
DOUBLE SPACED AS SHOWN



- NOTE(S):
- 1. MATERIAL: COPPER .050/(1.27) THICK
 - 2. PLATING: ELECTROPLATE TIN
 - 3. ALL DIMENSIONS IN INCHES/(MM).
 - 4. WIRE SIZE: 6 AWG
16 MM²
 - 5. PART IS ROHS COMPLIANT.

SALES DRAWING

| | | | | | | | | | |
|---|-------------------------------|--|-----------------------|--------------------------|----------------------|------------------------------|------------------------|--|--|
| REVISED MATL THKNS EC NO: ETC2007-0011 DRW: NEHLE 2006/07/12 CHKD: JMACNEIL 2006/07/13 APPR: RDOERSS 2006/07/17 | QUALITY SYMBOLS ▽=0 ▽=0 | GENERAL TOLERANCES (UNLESS SPECIFIED) | | DIMENSION STYLE IN/MM | SCALE --- | DESIGN UNITS INCH | THIRD ANGLE PROJECTION | | |
| | | 4 PLACES ± --- ± --- | 3 PLACES ± --- ± .005 | 2 PLACES ± 0.13 ± .01 | 1 PLACE ± 0.25 ± --- | DRAWN BY EDB | DATE 2000/11/01 | TITLE RING TONGUE TERMINAL VERSAKRIMP 6 AWG | |
| | | ANGULAR ±1/2° | | | | CHECKED BY HEB | DATE 2000/11/01 | | |
| | | DRAFT WHERE APPLICABLE MUST REMAIN WITHIN DIMENSIONS | | | | APPROVED BY RWD | DATE 2000/11/01 | MATERIAL NO. SEE CHART | |
| | | | | | | DOCUMENT NO. SD-19193-015 | SHEET NO. 1 OF 1 | | |
| THIS DRAWING CONTAINS INFORMATION THAT IS PROPRIETARY TO MOLEX INCORPORATED AND SHOULD NOT BE USED WITHOUT WRITTEN PERMISSION | | | | | | | | | |