



Chipsmall Limited consists of a professional team with an average of over 10 year of expertise in the distribution of electronic components. Based in Hongkong, we have already established firm and mutual-benefit business relationships with customers from,Europe,America and south Asia,supplying obsolete and hard-to-find components to meet their specific needs.

With the principle of "Quality Parts,Customers Priority,Honest Operation,and Considerate Service",our business mainly focus on the distribution of electronic components. Line cards we deal with include Microchip,ALPS,ROHM,Xilinx,Pulse,ON,Everlight and Freescale. Main products comprise IC,Modules,Potentiometer,IC Socket,Relay,Connector.Our parts cover such applications as commercial,industrial, and automotives areas.

We are looking forward to setting up business relationship with you and hope to provide you with the best service and solution. Let us make a better world for our industry!



## Contact us

Tel: +86-755-8981 8866 Fax: +86-755-8427 6832

Email & Skype: info@chipsmall.com Web: www.chipsmall.com

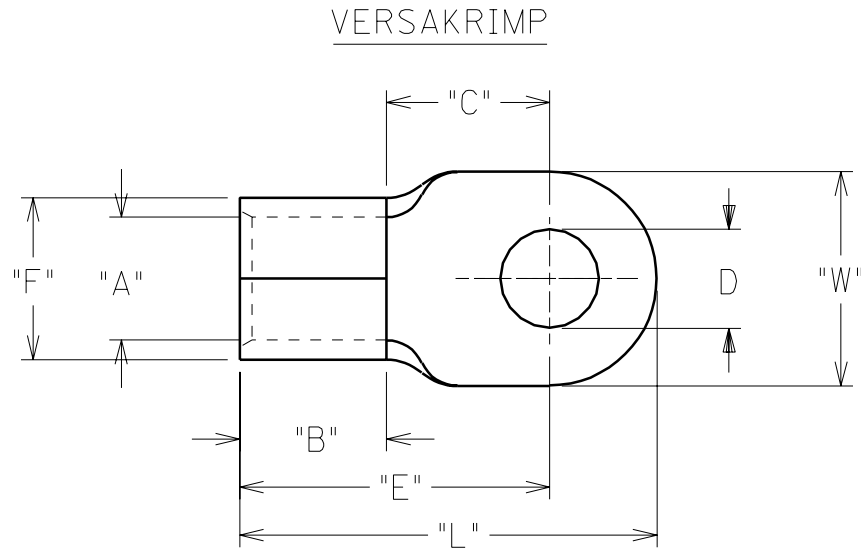
Address: A1208, Overseas Decoration Building, #122 Zhenhua RD., Futian, Shenzhen, China



PART NUMBER	WIRE SIZE	"W"	"C" MIN	"E" MAX	"B" MIN	"L" MAX	"A" MIN	STOCK THICKNESS	"F" MAX	AVAILABLE STUD SIZE
L-395-	4/0	1.102 1.128	.822	1.653	.734	2.242	.622	.099 .102	.865	14, 38, 76, 12, 58
L-398-	4/0	1.227 1.253	1.292	2.123	.734	2.765	.622	.099 .102	.865	58, 34, 78

DRWG. NO. SD02051

(A)



VERSAKRIMP

MATERIAL: COPPER  
PLATING: ELECTRO-TIN

STUD SIZE	±.005 "D"	
14	1/4"	.265
56	5/16"	.328
38	3/8"	.390
76	7/16"	.453
12	1/2"	.515
58	5/8"	.656
34	3/4"	.781
78	7/8"	.906

(A)

# CUSTOMER DRAWING

DIMENSIONS SHOWN (METRIC) INCH	
UNLESS OTHERWISE SPECIFIED TOLERANCES: ANGULAR ± 1/2°	
	INCH METRIC
3 PLACE	± .005 ± 0.13
2 PLACE	± .01 ± 0.25
1 PLACE	± --- ± ---
DRAFT WHERE APPLICABLE MUST REMAIN WITHIN DIMENSIONS	
DRWG. BY LEM	CHK'D. BY
APP'D. BY	SCALE NO:NE

REVISE ONLY ON CAD SYSTEM	
TITLE "L" RING TONGUE TERMINAL	
moLEX ETC INC. PINELLAS PARK, FLA. 33781 U.S.A.	SHEET NO. DATE 70 /03 /02
PART NO. SEE CHART	DRWG. NO. SD02051
FILE NAME SDL395 DGN	THIS DRAWING CONTAINS INFORMATION THAT IS PROPRIETARY TO MOLEX-ETC INC. AND SHOULD NOT BE USED WITHOUT WRITTEN PERMISSION.
DIV.	SIZE A

A	ADD STUD SIZE & UPDATE TO CAD ET970953 08/20
LTR.	REVISIONS