



Chipsmall Limited consists of a professional team with an average of over 10 year of expertise in the distribution of electronic components. Based in Hongkong, we have already established firm and mutual-benefit business relationships with customers from,Europe,America and south Asia,supplying obsolete and hard-to-find components to meet their specific needs.

With the principle of “Quality Parts,Customers Priority,Honest Operation,and Considerate Service”,our business mainly focus on the distribution of electronic components. Line cards we deal with include Microchip,ALPS,ROHM,Xilinx,Pulse,ON,Everlight and Freescale. Main products comprise IC,Modules,Potentiometer,IC Socket,Relay,Connector.Our parts cover such applications as commercial,industrial, and automotives areas.

We are looking forward to setting up business relationship with you and hope to provide you with the best service and solution. Let us make a better world for our industry!



## Contact us

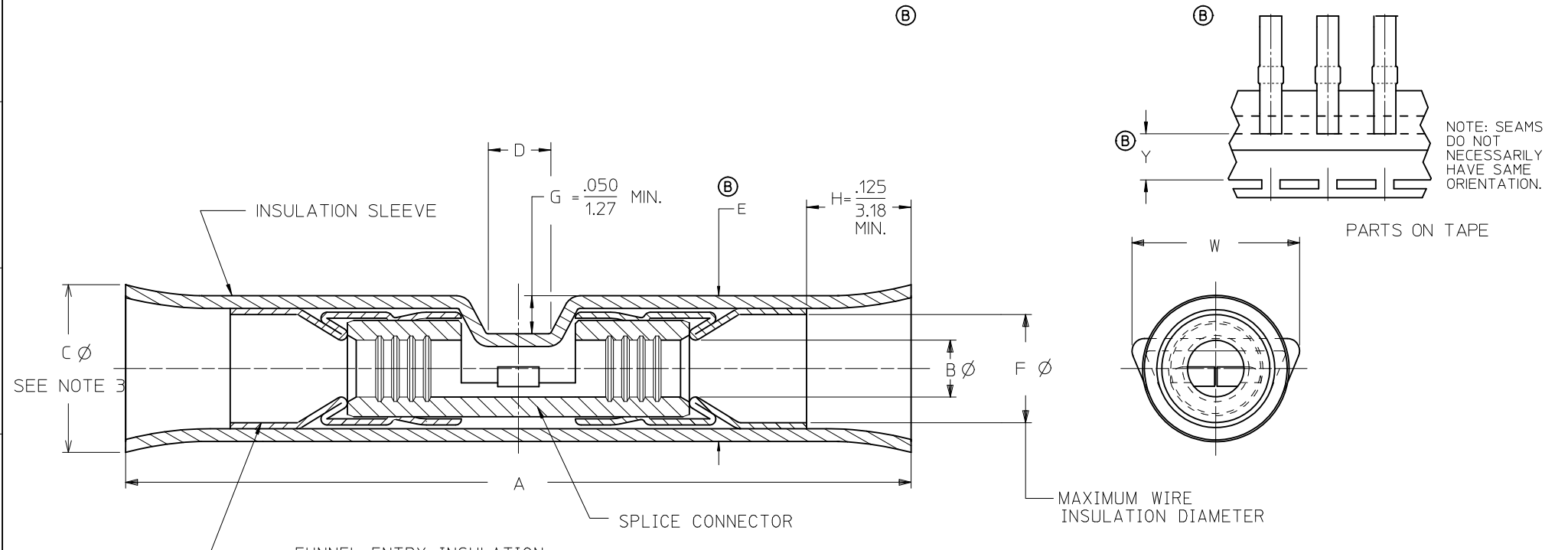
Tel: +86-755-8981 8866 Fax: +86-755-8427 6832

Email & Skype: info@chipsmall.com Web: www.chipsmall.com

Address: A1208, Overseas Decoration Building, #122 Zhenhua RD., Futian, Shenzhen, China



LOOSE PIECE		TAPE MOUNTED		WIRE AWG	INSUL COLOR	DIMENSIONS								
MATERIAL NO.	ENGINEERING P/N	MIL-T-7928/5 PART NO.	MATERIAL NO.			ENGINEERING P/N	A MAX.	B	ⓑ C	D MIN.	E	F MIN.	W MAX.	Y NOMINAL
191990007	WA-840	M7928/5-3	191990008	WA-840T	22-18	RED	1.300/(33.02)	.052 TO .073 (1.32 TO 1.85)	.160 TO .220 (4.06 TO 5.59)	.08/(2.0)	.160 TO .210 (4.06 TO 5.33)	.11/(2.8)	.250/(6.35)	.48/(12.1)
191990009	WB-841	M7928/5-4	191990010	WB-841T	16-14	BLUE	1.300/(33.02)	.081 TO .095 (2.06 TO 2.41)	.180 TO .260 (4.57 TO 6.60)	.08/(2.0)	.180 TO .250 (4.57 TO 6.35)	.14/(3.6)	.290/(7.37)	.49/(12.4)
191990011	WC-842	M7928/5-5	-	-	12-10	YELLOW	1.700/(43.18)	.129 TO .139 (3.28 TO 3.53)	.250 TO .320 (6.35 TO 8.13)	.11/(2.8)	.250 TO .310 (6.35 TO 7.87)	.20/(5.1)	.340/(8.64)	-



- NOTES:
- MATERIAL  
INSULATION: TRANSPARENT NYLON  
FERRULE: TIN PLATED COPPER ALLOY  
CONNECTOR: TIN PLATED COPPER
  - PARTS ARE ROHS COMPLIANT.
  - ⓑ FLARE PERMISSIBLE, NOT REQUIRED.

<b>ALLOW FLARE MATCH MIL</b> EC NO: WNA2011-0273 DRW: WETHRODAHL 2010/11/18 CHKD: JMACNEIL 2010/11/19 APPR: JMACNEIL 2010/12/02 REV B	QUALITY SYMBOLS ▽=0 ▽7=0	GENERAL TOLERANCES (UNLESS SPECIFIED) mm INCH 4 PLACES ± --- ± --- 3 PLACES ± --- ± --- 2 PLACES ± --- ± --- 1 PLACE ± --- ± --- ANGULAR ± ---°	DIMENSION STYLE IN/MM DRAWN BY DATE RCM 1993/03/04 CHECKED BY DATE JM 1993/03/04 APPROVED BY DATE JMACNEIL 2010/12/02	SCALE --- DESIGN UNITS INCH THIRD ANGLE PROJECTION	TITLE AVIKRIMP WINDOW BUTT SPLICE	
	DRAFT WHERE APPLICABLE MUST REMAIN WITHIN DIMENSIONS		SEE CHART	MATERIAL NO.	DOCUMENT NO. SD-19199-003	
	THIS DRAWING CONTAINS INFORMATION THAT IS PROPRIETARY TO MOLEX INCORPORATED AND SHOULD NOT BE USED WITHOUT WRITTEN PERMISSION		SHEET NO. 1 OF 1	MOLEX INCORPORATED		
	Molex logo					