



Chipsmall Limited consists of a professional team with an average of over 10 year of expertise in the distribution of electronic components. Based in Hongkong, we have already established firm and mutual-benefit business relationships with customers from,Europe,America and south Asia,supplying obsolete and hard-to-find components to meet their specific needs.

With the principle of “Quality Parts,Customers Priority,Honest Operation,and Considerate Service”,our business mainly focus on the distribution of electronic components. Line cards we deal with include Microchip,ALPS,ROHM,Xilinx,Pulse,ON,Everlight and Freescale. Main products comprise IC,Modules,Potentiometer,IC Socket,Relay,Connector.Our parts cover such applications as commercial,industrial, and automotives areas.

We are looking forward to setting up business relationship with you and hope to provide you with the best service and solution. Let us make a better world for our industry!



Contact us

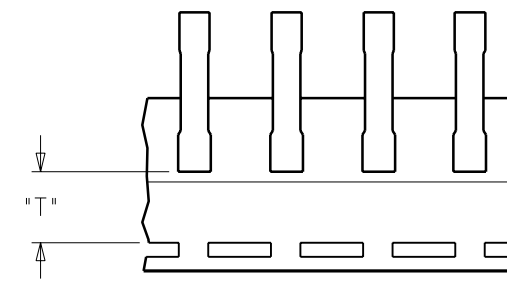
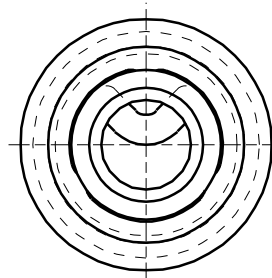
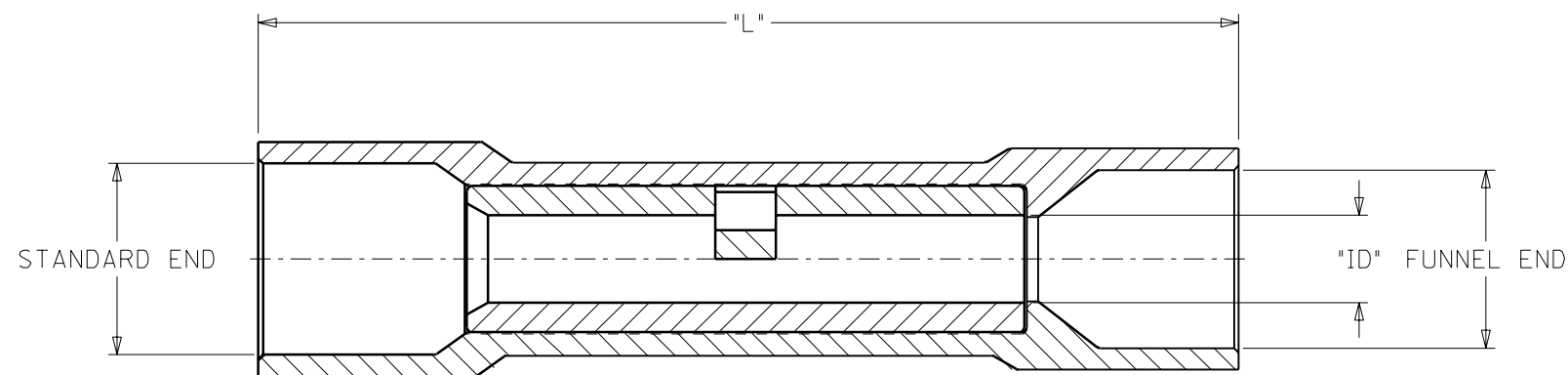
Tel: +86-755-8981 8866 Fax: +86-755-8427 6832

Email & Skype: info@chipsmall.com Web: www.chipsmall.com

Address: A1208, Overseas Decoration Building, #122 Zhenhua RD., Futian, Shenzhen, China



MATERIAL NUMBER	ALTERNATE NUMBER	WIRE SIZE AWG	INSULATION COLOR	CONNECTOR ID	MAX. WIRE INSUL. DIA.		LENTH "L"	TAPE HEIGHT "T"	DESCRIPTION
					STANDARD END	FUNNEL END			
F 192020010	AS-932	22-18	LIGHT RED	.061	.161	.147	1.07	----	LOOSE PIECE
F 192020011	AS-932-DK	22-18	DARK RED	.061	.161	.147	1.07	----	LOOSE PIECE
192020012	AS-932-DKT	22-18	DARK RED	.061	.161	.147	1.07	.480	TAPE MOUNTED
192020026	BS-942	16-14	LIGHT BLUE	.087	.199	.185	1.07	----	LOOSE PIECE
192020030	BS-942T	16-14	LIGHT BLUE	.087	.199	.185	1.07	.480	TAPE MOUNTED
192020027	BS-942-DK	16-14	DARK BLUE	.087	.199	.185	1.07	----	LOOSE PIECE
192020029	BS-942-DKT	16-14	DARK BLUE	.087	.199	.185	1.07	.480	TAPE MOUNTED
192020028	BS-942-DKBT	16-14	DARK BLUE	.087	.199	.185	1.07	.480	TAPE MOUNTED LARGE REEL
E 192020131	BS-942-B	16-14	BLUE	.087	.199	.185	1.07	----	LOOSE PIECE
192020130	BS-932-BBT	16-14	BLUE	.087	.199	.185	1.07	.480	TAPE MOUNTED LARGE REEL
192020045	CS-952	12-10	YELLOW	.138	.276	.262	1.15	----	LOOSE PIECE
192020046	CS-952-DK	12-10	DARK YELLOW	.138	.276	.262	1.15	----	LOOSE PIECE
192020047	CS-952-DKT	12-10	DARK YELLOW	.138	.276	.262	1.15	.440	TAPE MOUNTED
192020048	CS-952-DKBT	12-10	DARK YELLOW	.138	.276	.262	1.15	.440	TAPE MOUNTED LARGE REEL
192020141	CS-952 BULK	12-10	YELLOW	.138	.276	.262	1.15	----	BULK PACKED, 2500 PER PACKAGE
D 192020142	CS-952-DK BULK	12-10	DARK YELLOW	.138	.276	.262	1.15	----	BULK PACKED, 2500 PER PACKAGE



PARTS ON TAPE

NOTES:
 1. MATERIAL: COPPER.
 2. PLATING: ELECTRON-TIN.
 3. INSULATION: 6/6 NYLON

CUSTOMER DRAWING

DIMENSIONS SHOWN (METRIC) INCH			
UNLESS OTHERWISE SPECIFIED TOLERANCES: ANGULAR ± 1/2°			
	INCH	METRIC	
3 PLACE	± .005	± ---	
2 PLACE	± .01	± 0.13	
1 PLACE	± ---	± 0.25	
DRAFT WHERE APPLICABLE MUST REMAIN WITHIN DIMENSIONS			
DRWG. BY	HEB	CHK'D. BY	RWD
APP'D. BY	RWD	SCALE	NO:NE

REVISE ONLY ON CAD SYSTEM			
TITLE FUNNEL ENTRY SEAMLESS NYLAKRIMP BUTT CONNECTOR			
molex ETC INC. PINELLAS PARK, FLA. 33781 U.S.A.		SHEET NO. 1 OF 1	DATE 00/07/18
PART NO. SEE TABLE		DRWG. NO. SD-19202-001	
THIS DRAWING CONTAINS INFORMATION THAT IS PROPRIETARY TO MOLEX-ETC INC. AND SHOULD NOT BE USED WITHOUT WRITTEN PERMISSION.			
FILE NAME SD19202001 DGN	SCALE	DIV. ET	SIZE B

A	RELEASE NEW DOC. ETC2001-0075 2000/07/18 HEB
LTR.	REVISIONS