



Chipsmall Limited consists of a professional team with an average of over 10 year of expertise in the distribution of electronic components. Based in Hongkong, we have already established firm and mutual-benefit business relationships with customers from,Europe,America and south Asia,supplying obsolete and hard-to-find components to meet their specific needs.

With the principle of “Quality Parts,Customers Priority,Honest Operation,and Considerate Service”,our business mainly focus on the distribution of electronic components. Line cards we deal with include Microchip,ALPS,ROHM,Xilinx,Pulse,ON,Everlight and Freescale. Main products comprise IC,Modules,Potentiometer,IC Socket,Relay,Connector.Our parts cover such applications as commercial,industrial, and automotives areas.

We are looking forward to setting up business relationship with you and hope to provide you with the best service and solution. Let us make a better world for our industry!



## Contact us

Tel: +86-755-8981 8866 Fax: +86-755-8427 6832

Email & Skype: info@chipsmall.com Web: www.chipsmall.com

Address: A1208, Overseas Decoration Building, #122 Zhenhua RD., Futian, Shenzhen, China

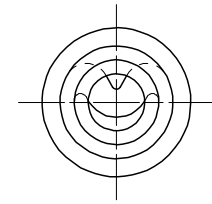
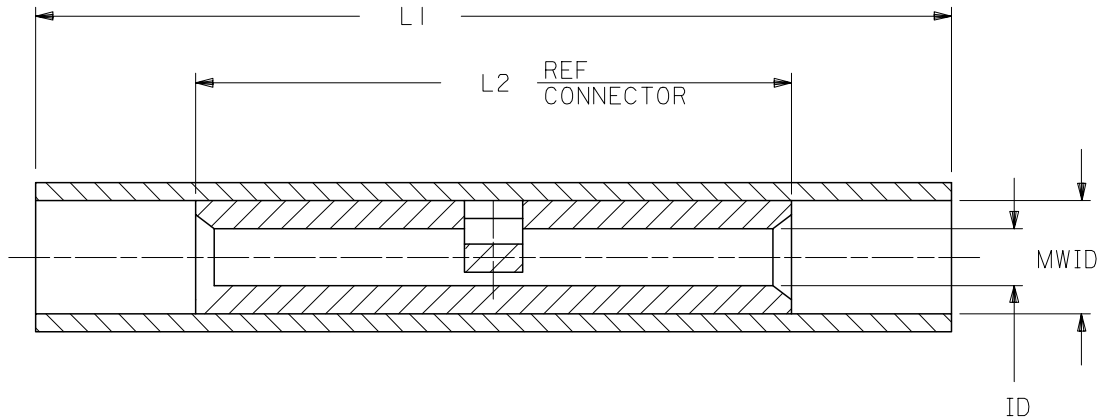


PART NO.	INSULATION COLOR	WIRE SIZE	ID	L1 MAX	L2 MAX.	MWID
AS-N-345	RED	22-18	.059	1.035	.675	.130
BS-N-331	BLUE	16-14	.091	1.080	.675	.140
CS-N-346	YELLOW	12-10	.138	1.300	.827	.223

(B)

NOTES:

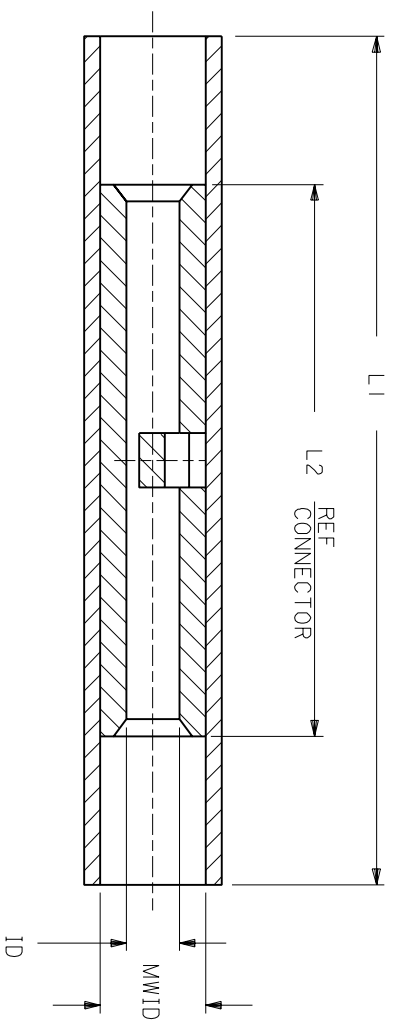
- MATERIAL:  
INSULATION: NYLON  
CONNECTOR: TIN PLATED SEAMLESS COPPER
- IF NECESSARY: SLIGHT FLARE ON ONE END ACCEPTABLE FOR ASSEMBLY PURPOSES.



CUSTOMER DRAWING

REVISED & REDRAWN EC NO: B DRWN: SHADECK 2005/06/13 CHKD: RDEROSS 2005/06/21 APPR: RDEROSS 2005/06/21	DESCRIPTION REV	QUALITY SYMBOLS ▽=0 ▽=0	GENERAL TOLERANCES (UNLESS SPECIFIED) <table border="1"> <thead> <tr> <th></th> <th>mm</th> <th>INCH</th> </tr> </thead> <tbody> <tr> <td>4 PLACES</td> <td>± ---</td> <td>± ---</td> </tr> <tr> <td>3 PLACES</td> <td>± ---</td> <td>± ---</td> </tr> <tr> <td>2 PLACES</td> <td>± ---</td> <td>± ---</td> </tr> <tr> <td>1 PLACE</td> <td>± ---</td> <td>± ---</td> </tr> </tbody> </table>		mm	INCH	4 PLACES	± ---	± ---	3 PLACES	± ---	± ---	2 PLACES	± ---	± ---	1 PLACE	± ---	± ---	DIMENSION STYLE IN/MM	SCALE 4:1	DESIGN UNITS INCH	THIRD ANGLE PROJECTION
			mm	INCH																		
		4 PLACES	± ---	± ---																		
		3 PLACES	± ---	± ---																		
2 PLACES	± ---	± ---																				
1 PLACE	± ---	± ---																				
DRAFT WHERE APPLICABLE MUST REMAIN WITHIN DIMENSIONS			DRAWN BY EMF	DATE 07/03/91	TITLE NYLAKRIMP BUTT CONNECTOR																	
			CHECKED BY JM	DATE 07/03/91	MOLEX INCORPORATED																	
			APPROVED BY FP	DATE 07/03/91	MATERIAL NO. SEE TABLE	DOCUMENT NO. 60002-11C	SHEET NO. 1 OF 1															

PART NO.	INSULATION COLOR	WIRE SIZE	ID	L1 MAX	L2 MAX	MWID
AS-N-345	RED	22-18	.059	1.035	.675	.130
BS-N-331	BLUE	16-14	.091	1.080	.675	.160
CS-N-346	YELLOW	12-10	.138	1.300	.827	.223



NOTES:  
 1. MATERIAL:  
 INSULATION: NYLON  
 CONNECTOR: TIN PLATED SEAMLESS COPPER  
 3. IF NECESSARY: SLIGHT FLARE ON ONE END ACCEPTABLE FOR ASSEMBLY PURPOSES.

# CUSTOMER DRAWING

DIMENSIONS SHOWN (METRIC) INCH  
 UNLESS OTHERWISE SPECIFIED  
 TOLERANCES: ANGULAR = 1/2°

	INCH	METRIC
3 PLACE	± .005	± 0.13
2 PLACE	± .01	± 0.25
1 PLACE	± ---	± ---

DRAFT WHERE APPLICABLE MUST REMAIN WITHIN DIMENSIONS

DRWG. BY	EMF	CHK'D. BY	JM
APP'D. BY	FP	SCALE	NO: NE

DRWG. NO. 60002-11C

REVISE ONLY ON CAD SYSTEM

NYLAKRIMP BUTT CONNECTOR

LTR.	REVISIONS
A	ADD P/N AND UPDATE DRAWINGS ET80539 12/18 HEB

molex **ETC INC.** PINELLAS PARK, FLA. 33781 U.S.A. SHEET NO. 1 OF 1 DATE 91/07/03

PART NO. 60002-11C DRAWG. NO. 60002-11C

FILE NAME: SEE TABLE THIS DRAWING CONTAINS INFORMATION THAT IS PROPRIETARY TO MOLEX-ETC INC. AND SHOULD NOT BE USED WITHOUT WRITTEN PERMISSION. DIV. ET A