



Chipsmall Limited consists of a professional team with an average of over 10 year of expertise in the distribution of electronic components. Based in Hongkong, we have already established firm and mutual-benefit business relationships with customers from,Europe,America and south Asia,supplying obsolete and hard-to-find components to meet their specific needs.

With the principle of “Quality Parts,Customers Priority,Honest Operation,and Considerate Service”,our business mainly focus on the distribution of electronic components. Line cards we deal with include Microchip,ALPS,ROHM,Xilinx,Pulse,ON,Everlight and Freescale. Main products comprise IC,Modules,Potentiometer,IC Socket,Relay,Connector.Our parts cover such applications as commercial,industrial, and automotives areas.

We are looking forward to setting up business relationship with you and hope to provide you with the best service and solution. Let us make a better world for our industry!



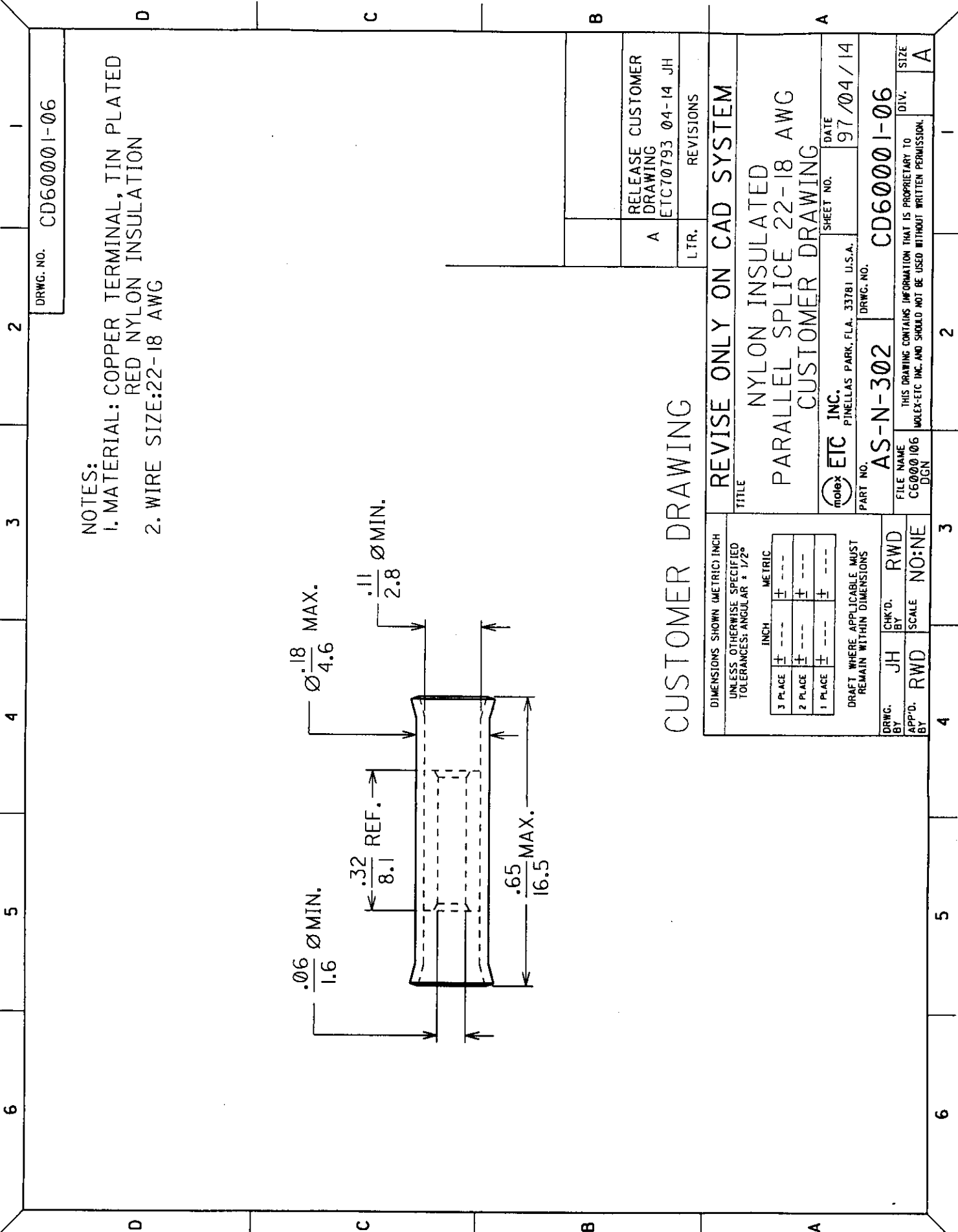
Contact us

Tel: +86-755-8981 8866 Fax: +86-755-8427 6832

Email & Skype: info@chipsmall.com Web: www.chipsmall.com

Address: A1208, Overseas Decoration Building, #122 Zhenhua RD., Futian, Shenzhen, China





NOTES:
 1. MATERIAL: COPPER TERMINAL, TIN PLATED
 RED NYLON INSULATION
 2. WIRE SIZE: 22-18 AWG

DRWG. NO. CD60001-06

CUSTOMER DRAWING

DIMENSIONS SHOWN (METRIC) INCH UNLESS OTHERWISE SPECIFIED TOLERANCES: ANGULAR ± 1/2°	
3 PLACE	±
2 PLACE	±
1 PLACE	±
DRAFT WHERE APPLICABLE MUST REMAIN WITHIN DIMENSIONS	
DRWG. BY	JH
CHK'D. BY	RWD
APP'D. BY	RWD
SCALE	NO:NE

TITLE REVISE ONLY ON CAD SYSTEM	
NYLON INSULATED PARALLEL SPLICE 22-18 AWG CUSTOMER DRAWING	
ETC INC. PINELLAS PARK, FLA. 33781 U.S.A.	SHEET NO. 97/04/14
PART NO. AS-N-302	DRWG. NO. CD60001-06
FILE NAME C6000106 DGN	THIS DRAWING CONTAINS INFORMATION THAT IS PROPRIETARY TO MOLEX-ETC INC. AND SHOULD NOT BE USED WITHOUT WRITTEN PERMISSION.
DIV. A	SIZE A

A	RELEASE CUSTOMER DRAWING ETC70793 04-14 JH
L.T.R.	REVISIONS