



Chipsmall Limited consists of a professional team with an average of over 10 year of expertise in the distribution of electronic components. Based in Hongkong, we have already established firm and mutual-benefit business relationships with customers from,Europe,America and south Asia,supplying obsolete and hard-to-find components to meet their specific needs.

With the principle of "Quality Parts,Customers Priority,Honest Operation,and Considerate Service",our business mainly focus on the distribution of electronic components. Line cards we deal with include Microchip,ALPS,ROHM,Xilinx,Pulse,ON,Everlight and Freescale. Main products comprise IC,Modules,Potentiometer,IC Socket,Relay,Connector.Our parts cover such applications as commercial,industrial, and automotives areas.

We are looking forward to setting up business relationship with you and hope to provide you with the best service and solution. Let us make a better world for our industry!



## Contact us

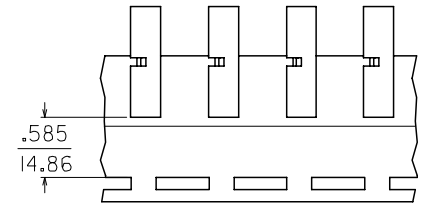
Tel: +86-755-8981 8866 Fax: +86-755-8427 6832

Email & Skype: info@chipsmall.com Web: www.chipsmall.com

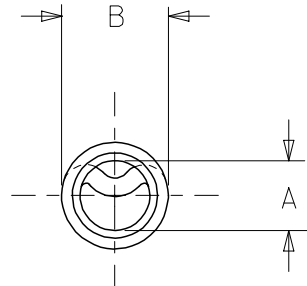
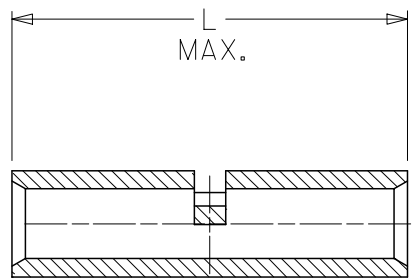
Address: A1208, Overseas Decoration Building, #122 Zhenhua RD., Futian, Shenzhen, China



MATERIAL NUMBER	ENG. NUMBER	"L" MAX	"A" MIN.	"B" MAX	PACKAGING
192150018	BS-331	.675 (17.10)	.091 (2.31)	.160 (4.06)	LOOSE PIECE
192150022	BS-342-MX	.605 (15.37)	.088 (2.24)	.160 (4.06)	
192150115	BS-331T	.675 (17.10)	.091 (2.31)	.160 (4.06)	TAPE MOUNTED
192150250	BS-331US	.675 (17.10)	.091 (2.31)	.160 (4.06)	LOOSE PIECE
192150255	BS-331UST	.675 (17.10)	.091 (2.31)	.160 (4.06)	TAPE MOUNTED



PARTS ON TAPE



SALES DRAWING

- NOTES:  
 1. MATERIAL: COPPER.  
 2. PLATING: ELECTRO-TIN.  
 3. ALL DIMENSIONS IN INCHES/(MM).

OBSO P/N 192150020 & -21 EC NO: ETC2006-0022 DRW:DMYRICK 2005/08/15 CHKD:RDEROSS 2005/08/15 APPR:RDEROSS 2005/08/15	QUALITY SYMBOLS
	▼=0
	▽=0
	REV

DESCRIPTION
-------------

GENERAL TOLERANCES (UNLESS SPECIFIED)	
	INCH
4 PLACES	± .005
3 PLACES	± .004
2 PLACES	± .003
1 PLACE	± .002
ANGULAR ± .005°	
DRAFT WHERE APPLICABLE MUST REMAIN WITHIN DIMENSIONS	

DIMENSION STYLE	
IN/MM	
DRAWN BY	DATE
JLOMASTRO	05/01/07
CHECKED BY	DATE
RDEROSS	05/01/07
APPROVED BY	DATE
RDEROSS	05/01/07
MATERIAL NO.	DOCUMENT NO.
SEE CHART	SD-19215-002
SIZE B	THIS DRAWING CONTAINS INFORMATION THAT IS PROPRIETARY TO MOLEX INCORPORATED AND SHOULD NOT BE USED WITHOUT WRITTEN PERMISSION

SCALE	DESIGN UNITS	THIRD ANGLE PROJECTION
	INCH	
TITLE		
BUTT CONNECTOR SEAMLESS 16-14 AWG WIRE SIZE		
MOLEX INCORPORATED		
MATERIAL NO.	DOCUMENT NO.	SHEET NO.
	SD-19215-002	1 OF 1