



Chipsmall Limited consists of a professional team with an average of over 10 year of expertise in the distribution of electronic components. Based in Hongkong, we have already established firm and mutual-benefit business relationships with customers from,Europe,America and south Asia,supplying obsolete and hard-to-find components to meet their specific needs.

With the principle of “Quality Parts,Customers Priority,Honest Operation,and Considerate Service”,our business mainly focus on the distribution of electronic components. Line cards we deal with include Microchip,ALPS,ROHM,Xilinx,Pulse,ON,Everlight and Freescale. Main products comprise IC,Modules,Potentiometer,IC Socket,Relay,Connector.Our parts cover such applications as commercial,industrial, and automotives areas.

We are looking forward to setting up business relationship with you and hope to provide you with the best service and solution. Let us make a better world for our industry!



Contact us

Tel: +86-755-8981 8866 Fax: +86-755-8427 6832

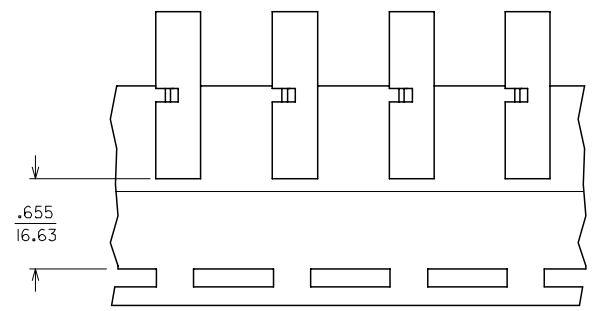
Email & Skype: info@chipsmall.com Web: www.chipsmall.com

Address: A1208, Overseas Decoration Building, #122 Zhenhua RD., Futian, Shenzhen, China

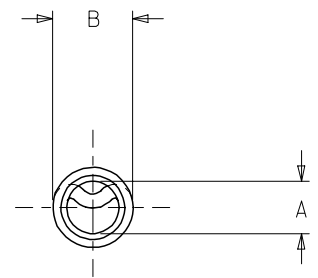
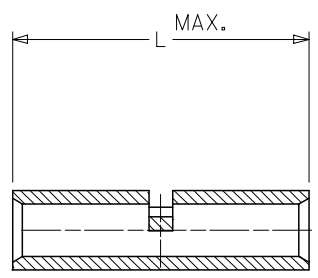


10	9	8	7	6	
MATERIAL NUMBER	ALTERNATE NUMBER	"L" MAX	"A" MIN.	"B"	PACKAGING
192150009	AS-345	.675 (17.10)	.059 (1.50)	.130 (3.30)	LOOSE PIECE
192150007	AS-332	.605 (15.37)	.059 (1.50)	.130 (3.30)	
192150012	AS-348	.635 (16.13)	.059 (1.50)	.130 (3.30)	
192150011	AS-345T	.675 (17.10)	.059 (1.50)	.130 (3.30)	TAPE MOUNTED
192150248	AS-345US	.675 (17.10)	.059 (1.50)	.130 (3.30)	LOOSE PIECE
192150254	AS-345UST	.675 (17.10)	.059 (1.50)	.130 (3.30)	TAPE MOUNTED

ⓑ



PARTS ON TAPE



CUSTOMER DRAWING

NOTES:
 1. MATERIAL: COPPER.
 2. PLATING: ELECTRO-TIN.
 3. ALL DIMENSIONS IN INCHES/(MM).

REVISED / REDRAWN EC NO: ETC2005-0116 DRAWN: JLOMASTRO 2005/03/03 CHK'D: RDEROSS 2005/03/04 APPR: RDEROSS 2005/03/07	DESCRIPTION B	QUALITY SYMBOLS	GENERAL TOLERANCES (UNLESS SPECIFIED)	DIMENSION STYLE IN/MM	SCALE	DESIGN UNITS INCH	THIRD ANGLE PROJECTION																												
		$\nabla=0$ $\nabla=0$	<table border="1"> <thead> <tr> <th></th> <th>mm</th> <th>INCH</th> </tr> </thead> <tbody> <tr> <td>4 PLACES</td> <td>± ---</td> <td>± ---</td> </tr> <tr> <td>3 PLACES</td> <td>± ---</td> <td>± .005</td> </tr> <tr> <td>2 PLACES</td> <td>± 0.13</td> <td>± .01</td> </tr> <tr> <td>1 PLACE</td> <td>± 0.25</td> <td>± ---</td> </tr> </tbody> </table>		mm	INCH	4 PLACES	± ---	± ---	3 PLACES	± ---	± .005	2 PLACES	± 0.13	± .01	1 PLACE	± 0.25	± ---	<table border="1"> <thead> <tr> <th>DRAWN BY</th> <th>DATE</th> </tr> </thead> <tbody> <tr> <td>JLOMASTRO</td> <td>05/01/07</td> </tr> <tr> <th>CHECKED BY</th> <th>DATE</th> </tr> <tr> <td>RDEROSS</td> <td>05/01/07</td> </tr> <tr> <th>APPROVED BY</th> <th>DATE</th> </tr> <tr> <td>RDEROSS</td> <td>05/01/07</td> </tr> </tbody> </table>	DRAWN BY	DATE	JLOMASTRO	05/01/07	CHECKED BY	DATE	RDEROSS	05/01/07	APPROVED BY	DATE	RDEROSS	05/01/07	TITLE			
			mm	INCH																															
		4 PLACES	± ---	± ---																															
3 PLACES	± ---	± .005																																	
2 PLACES	± 0.13	± .01																																	
1 PLACE	± 0.25	± ---																																	
DRAWN BY	DATE																																		
JLOMASTRO	05/01/07																																		
CHECKED BY	DATE																																		
RDEROSS	05/01/07																																		
APPROVED BY	DATE																																		
RDEROSS	05/01/07																																		
		ANGULAR ±1/2°																																	
		DRAFT WHERE APPLICABLE MUST REMAIN WITHIN DIMENSIONS	MATERIAL NO. SEE CHART	DOCUMENT NO. SD-19215-001			SHEET NO. 1 OF 1																												