



Chipsmall Limited consists of a professional team with an average of over 10 year of expertise in the distribution of electronic components. Based in Hongkong, we have already established firm and mutual-benefit business relationships with customers from,Europe,America and south Asia,supplying obsolete and hard-to-find components to meet their specific needs.

With the principle of “Quality Parts,Customers Priority,Honest Operation,and Considerate Service”,our business mainly focus on the distribution of electronic components. Line cards we deal with include Microchip,ALPS,ROHM,Xilinx,Pulse,ON,Everlight and Freescale. Main products comprise IC,Modules,Potentiometer,IC Socket,Relay,Connector.Our parts cover such applications as commercial,industrial, and automotives areas.

We are looking forward to setting up business relationship with you and hope to provide you with the best service and solution. Let us make a better world for our industry!



## Contact us

Tel: +86-755-8981 8866 Fax: +86-755-8427 6832

Email & Skype: info@chipsmall.com Web: www.chipsmall.com

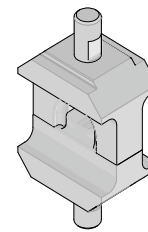
Address: A1208, Overseas Decoration Building, #122 Zhenhua RD., Futian, Shenzhen, China



**Crimp Tool Kit  
For Imperium  
and Imperium Plus**



**Application Tooling  
Specification Sheet**



**Order No. 19290-0080**

**SCOPE**

**Tooling:** Shank style Crimp Tool Kits are used with the Hydraulic Head Crimper with the Air/Hydraulic Pump (19286-1000). Refer to the appropriate tool instruction manual for installation and operation information.

**Products:** Imperium and Imperium Plus Terminals to 1/0 AWG bare and pre-tinned copper wire. Refer to the Product part number charts on this sheet for terminals.

**Testing**

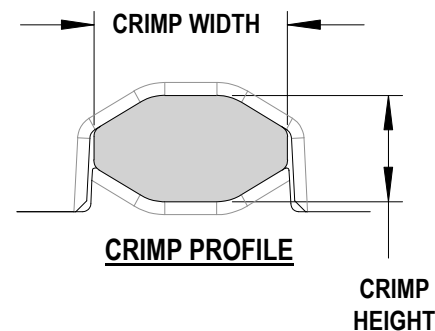
The tensile test or pull test is a means of evaluating the mechanical properties of the crimped connections. The following chart shows the specifications for the wire size. The tensile strength is shown in Newtons and (pounds) and indicates the minimum acceptable force to break or separate the terminal from the conductor.

Wire Size (AWG)	Minimum Pull (UL 486)
1/0	1112N (250 lbs.)

**Crimp measurement**

After crimping, the terminal crimp profiles should measure the following:

Terminal Series	Wire Size		Crimp Height (Ref)		Crimp Width (Ref)	
	AWG	Wire Style	mm	In.	mm	In.
171423 / 171562	1/0	Bare Copper	8.70-8.90	.342-.350	12.50-12.70	.492-.500
		Pre-Tinned				
31561	1/0	Bare Copper	8.70-8.90	.342-.350	12.55-12.75	.494-.502
		Pre-Tinned				



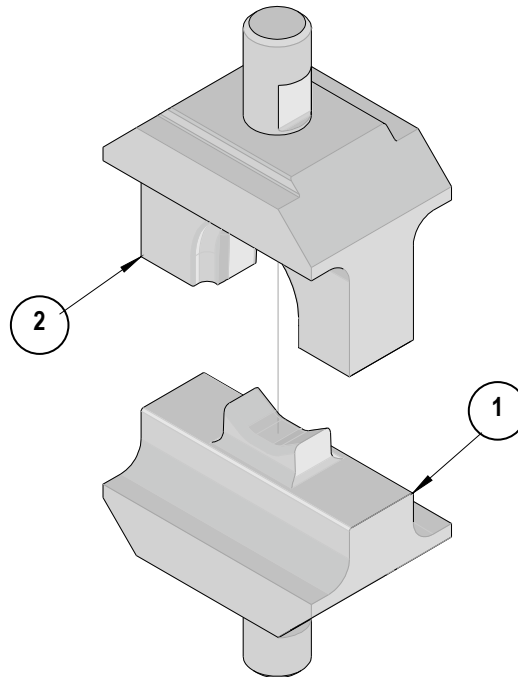
The following is a Partial List of the Product Part Numbers and their specifications that this tooling is designed to crimp. We will be adding to this list and an up to date copy is available on [www.molex.com](http://www.molex.com).

Terminal Series	Terminal No.	Wire Size (AWG)	Wire Strands / AWG	Wire Strip Length	
				In	mm
171423	171423-1302	1/0	1007 / 30, 1045 / 30	0.87	22
171562	171562-7003				
31561	31561-7000				

**CAUTION:** Molex crimp specifications are valid only when used with Molex terminals and tooling.

## Parts List

Item	Order No.	Description	Qty
	<b>19290-0080</b>	<b>Crimp Tooling Kit</b>	<b>REF</b>
1	19290-0082	Conductor Anvil	1
2	19290-0083	Conductor Punch	1



Visit our Web site at <http://www.molex.com>