



Chipsmall Limited consists of a professional team with an average of over 10 year of expertise in the distribution of electronic components. Based in Hongkong, we have already established firm and mutual-benefit business relationships with customers from,Europe,America and south Asia,supplying obsolete and hard-to-find components to meet their specific needs.

With the principle of “Quality Parts,Customers Priority,Honest Operation,and Considerate Service”,our business mainly focus on the distribution of electronic components. Line cards we deal with include Microchip,ALPS,ROHM,Xilinx,Pulse,ON,Everlight and Freescale. Main products comprise IC,Modules,Potentiometer,IC Socket,Relay,Connector.Our parts cover such applications as commercial,industrial, and automotives areas.

We are looking forward to setting up business relationship with you and hope to provide you with the best service and solution. Let us make a better world for our industry!



## Contact us

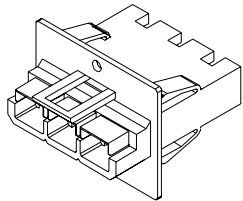
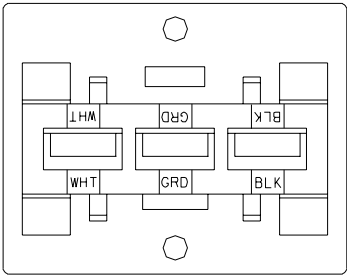
Tel: +86-755-8981 8866 Fax: +86-755-8427 6832

Email & Skype: [info@chipsmall.com](mailto:info@chipsmall.com) Web: [www.chipsmall.com](http://www.chipsmall.com)

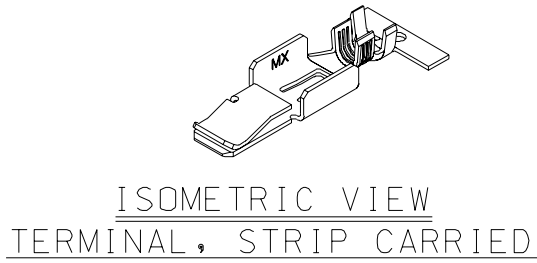
Address: A1208, Overseas Decoration Building, #122 Zhenhua RD., Futian, Shenzhen, China



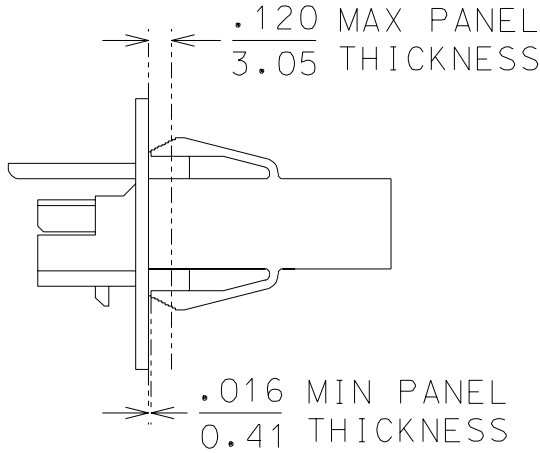
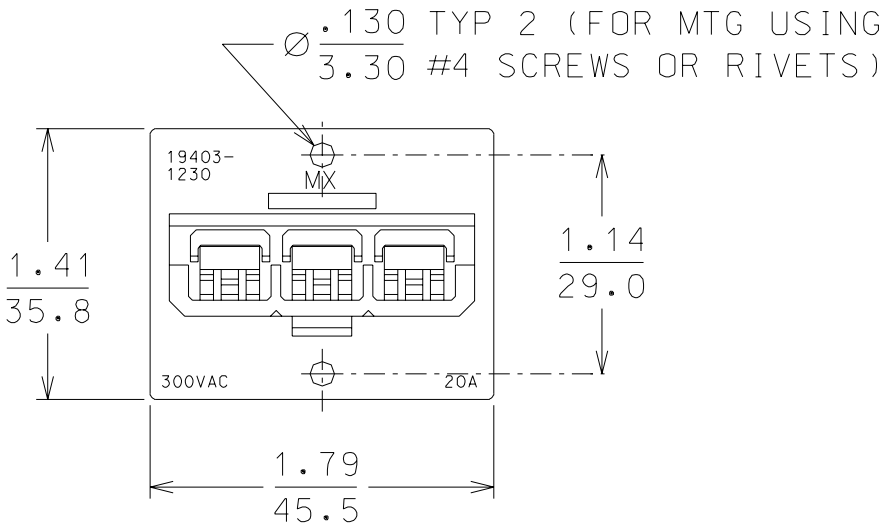
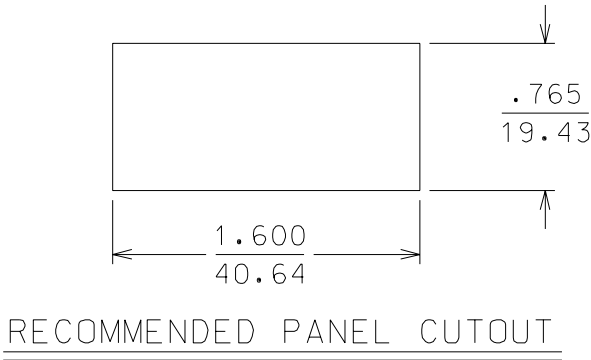
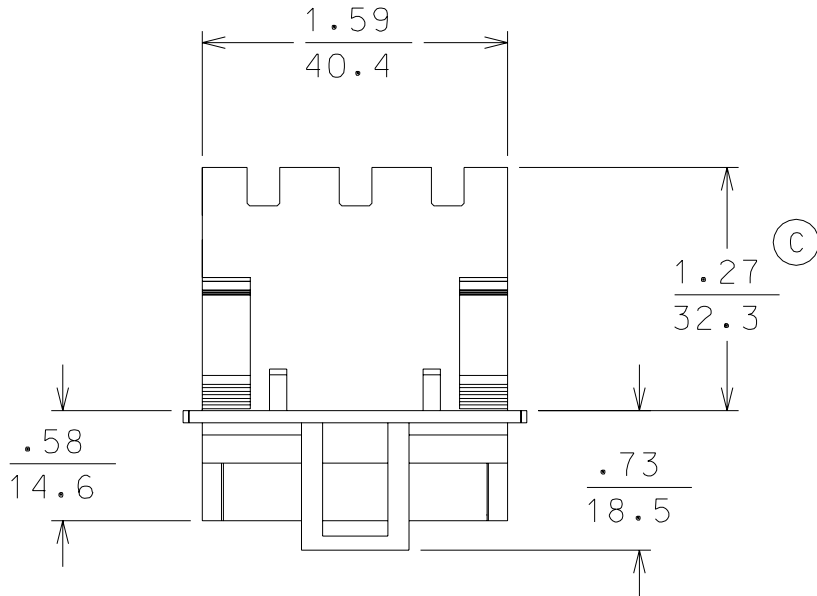
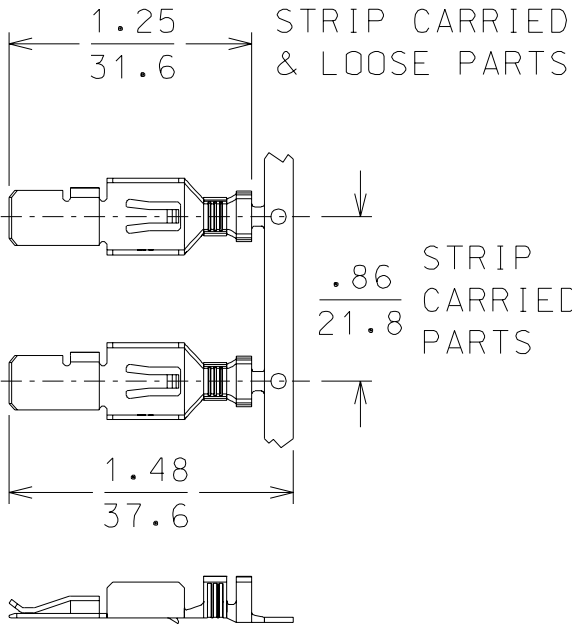
PART NUMBER	DESCRIPTION
194031230	SC HEADER HOUSING
194031240	TERMINAL, STRIP CARRIED
194031241	TERMINAL, LOOSE PIECE



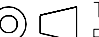

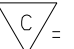

ISOMETRIC VIEW  
SC HEADER



ISOMETRIC VIEW  
TERMINAL, STRIP CARRIED



NOTES:  
1) TERMINAL MATERIAL: HIGH COPPER ALLOY  
PLATING: TIN  
2) HOUSING MATERIAL: POLYESTER UL94-5VA

EC NO. ETC2002-0085 DRWN: B. RUPERT 01/18/09 CHK: J. PAWLIC 01/18/09 APPR: R. DeROSS 01/18/09	DESCRIPTION	QUALITY SYMBOLS		GENERAL TOLERANCES: (UNLESS SPECIFIED)		SCALE 1 : 1	DESIGN UNITS <input type="checkbox"/> mm <input checked="" type="checkbox"/> INCH	 THIRD ANGLE PROJECTION	<input type="checkbox"/> mm INCH <input checked="" type="checkbox"/> INCH mm ONLY	REVISE ON CAD ONLY	
		MAJOR  =  CRITICAL  =		mm	INCH	DRAWN BY & DATE DAY 00/06/12		TITLE: CUSTOMER DRAWING SC PANEL MOUNT CONNECTOR 10 AWG			
			4 PLACES	±0.---	±.---	CHECKED BY & DATE RWD 00/06/12					
			3 PLACES	±0.---	±.005	APPROVED BY & DATE RWD 00/06/12		MOLEX INCORPORATED			
			2 PLACES	±0.13	±.01	CAD FILENAME 19403128.DGN					
		1 PLACE	±0.3	±.---	ANGULAR: ± 1/2 °						
	REV	DRAFT WHERE APPLICABLE MUST REMAIN WITHIN DIMENSIONS				THIS DRAWING CONTAINS INFORMATION THAT IS PROPRIETARY TO MOLEX INCORPORATED AND SHOULD NOT BE USED WITHOUT WRITTEN PERMISSION.					SIZE B