



Chipsmall Limited consists of a professional team with an average of over 10 year of expertise in the distribution of electronic components. Based in Hongkong, we have already established firm and mutual-benefit business relationships with customers from,Europe,America and south Asia,supplying obsolete and hard-to-find components to meet their specific needs.

With the principle of “Quality Parts,Customers Priority,Honest Operation,and Considerate Service”,our business mainly focus on the distribution of electronic components. Line cards we deal with include Microchip,ALPS,ROHM,Xilinx,Pulse,ON,Everlight and Freescale. Main products comprise IC,Modules,Potentiometer,IC Socket,Relay,Connector.Our parts cover such applications as commercial,industrial, and automotives areas.

We are looking forward to setting up business relationship with you and hope to provide you with the best service and solution. Let us make a better world for our industry!



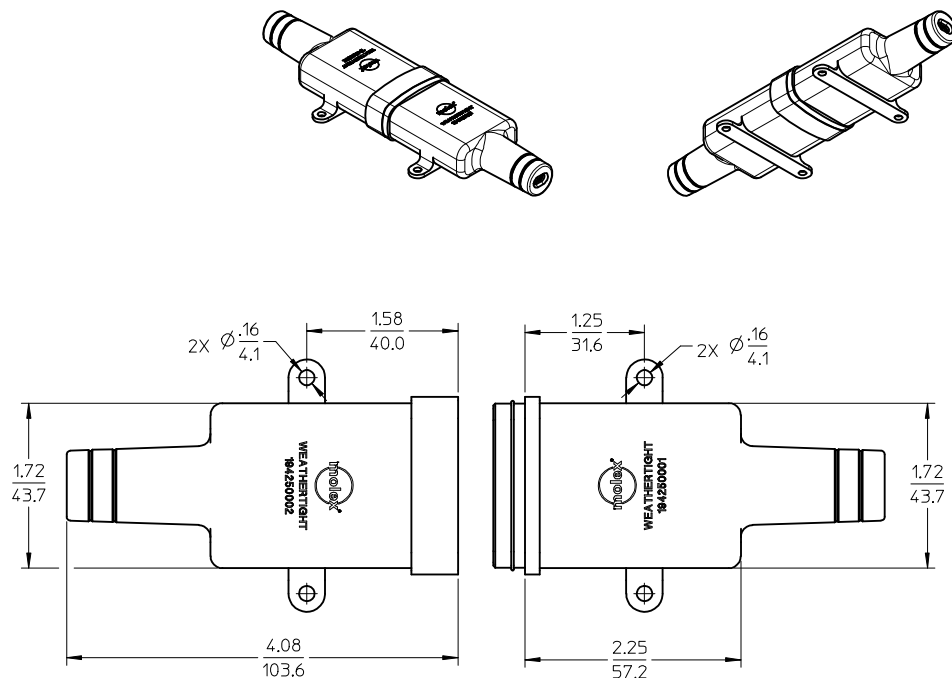
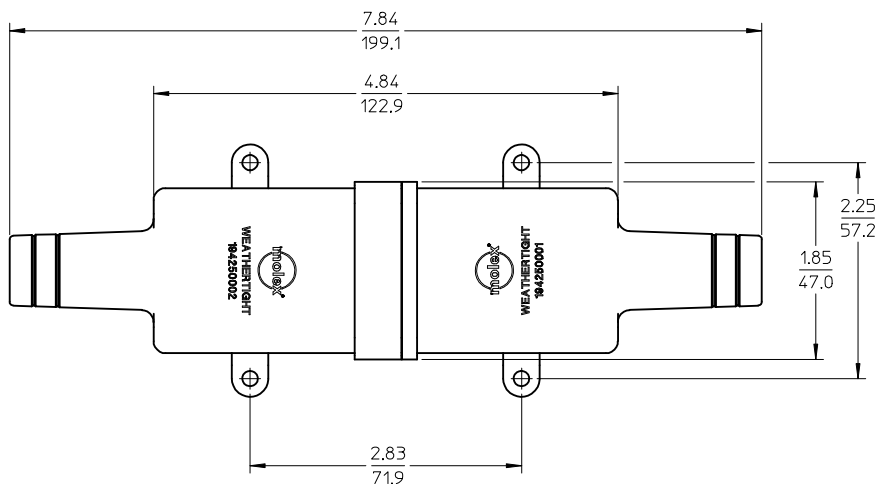
## Contact us

Tel: +86-755-8981 8866 Fax: +86-755-8427 6832

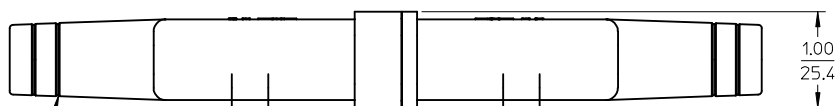
Email & Skype: [info@chipsmall.com](mailto:info@chipsmall.com) Web: [www.chipsmall.com](http://www.chipsmall.com)

Address: A1208, Overseas Decoration Building, #122 Zhenhua RD., Futian, Shenzhen, China

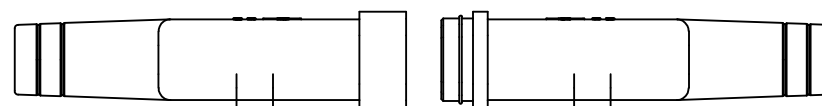




ASSEMBLED VIEWS



4X GROOVE PROVIDED AS CUT OFF GUIDE FOR USER WHEN USING THICK INSULATION TYPE CABLE.





194250002  
FEMALE BOOT

194250001  
MALE BOOT

NOTES:

- MATERIAL: THERMOPLASTIC ELASTOMER. COLOR: BLACK.  
UV RESISTANCE: UL "F1".
- PARTS ARE PACKAGED 15 EACH PER CARTON.

EC NO: ETC2004-0130 DRWN:DMYRICK 2004/01/21 CHKD:JPWLICK 2004/01/21 APPR:RDEROSS 2004/01/21  A	DESCRIPTION	QUALITY SYMBOLS  ▽ - 0  ▽ - 0	GENERAL TOLERANCES (UNLESS SPECIFIED)		SCALE 1:1	DESIGN UNITS INCH	 THIRD ANGLE PROJECTION	REVISE ON CAD ONLY		
				mm	INCH	DIMENSION STYLE IN/MM				
			4 PLACES	± ---	± ---	DRAWN BY				DATE
			3 PLACES	± ---	± ---	DMYRICK				04/01/06
			2 PLACES	± ---	± .025	CHECKED BY				DATE
			1 PLACE	± 0.64	± ---	JPWLICK	04/01/06	 MOLEX INCORPORATED		
			ANGULAR ± 2 °		APPROVED BY	DATE	MATERIAL NO.		DOCUMENT NO.	SHEET NO.
			DRAFT WHERE APPLICABLE		RDEROSS	04/01/06	SEE DRAWING SD-19425-001		1 OF 1	
	REV		MUST REMAIN WITHIN DIMENSIONS		THIS DRAWING CONTAINS INFORMATION THAT IS PROPRIETARY TO MOLEX INCORPORATED AND SHOULD NOT BE USED WITHOUT WRITTEN PERMISSION					C

WEAHTERTIGHT MALE/FEMALE  
BOOT ASSY, 16-12 AWG,  
ROMEX CABLE, SC

MOLEX MOLEX INCORPORATED

SEE DRAWING SD-19425-001