



Chipsmall Limited consists of a professional team with an average of over 10 year of expertise in the distribution of electronic components. Based in Hongkong, we have already established firm and mutual-benefit business relationships with customers from,Europe,America and south Asia,supplying obsolete and hard-to-find components to meet their specific needs.

With the principle of “Quality Parts,Customers Priority,Honest Operation,and Considerate Service”,our business mainly focus on the distribution of electronic components. Line cards we deal with include Microchip,ALPS,ROHM,Xilinx,Pulse,ON,Everlight and Freescale. Main products comprise IC,Modules,Potentiometer,IC Socket,Relay,Connector.Our parts cover such applications as commercial,industrial, and automotives areas.

We are looking forward to setting up business relationship with you and hope to provide you with the best service and solution. Let us make a better world for our industry!



Contact us

Tel: +86-755-8981 8866 Fax: +86-755-8427 6832

Email & Skype: info@chipsmall.com Web: www.chipsmall.com

Address: A1208, Overseas Decoration Building, #122 Zhenhua RD., Futian, Shenzhen, China



12 11 10 9 8 7 6 5 4 3 2 19425

J

I

H

G

F

E

D

C

B

A

J

I

H

G

F

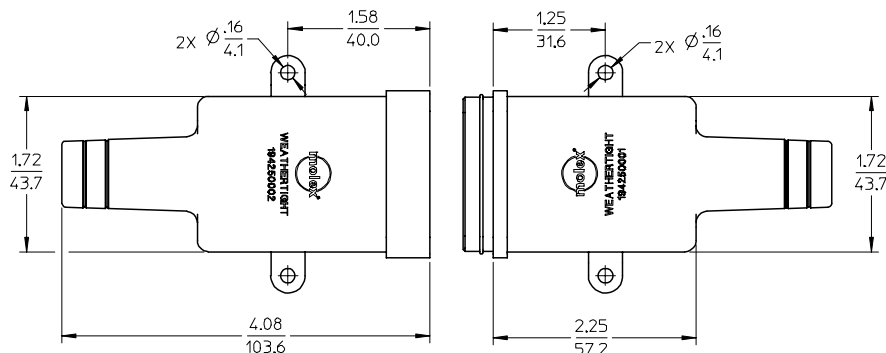
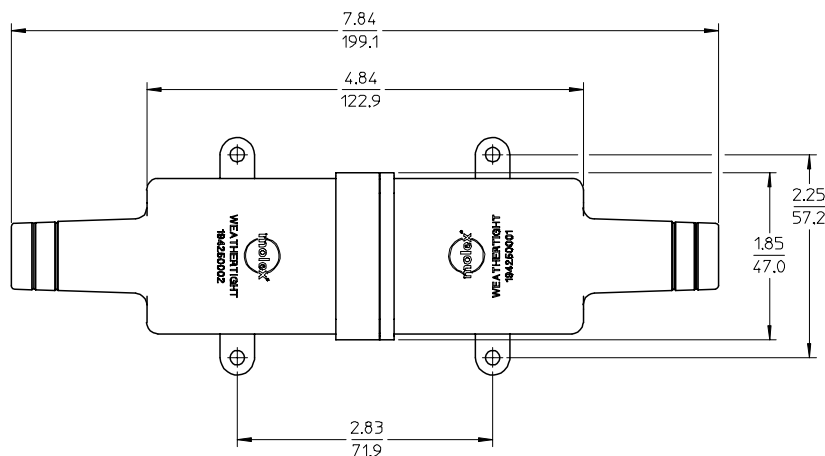
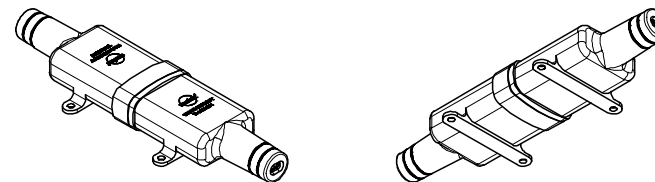
E

D

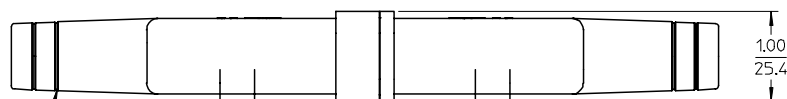
C

B

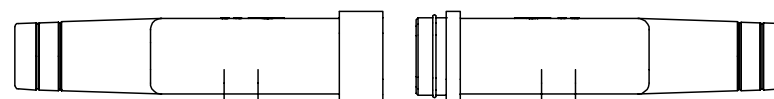
A



ASSEMBLED VIEWS



4X GROOVE PROVIDED AS CUT OFF GUIDE FOR USER WHEN USING THICK INSULATION TYPE CABLE.



194250002
FEMALE BOOT

194250001
MALE BOOT

NOTES:

1. MATERIAL: THERMOPLASTIC ELASTOMER. COLOR: BLACK.
UV RESISTANCE: UL "F1".
2. PARTS ARE PACKAGED 15 EACH PER CARTON.

EC NO: ETC2004-0130 DRWN: DMYRICK 2004/01/21 CHKD: JPAWLICK 2004/01/21 APPR: RDEROSS 2004/01/21 A	DESCRIPTION REV	QUALITY SYMBOLS ▽-0 C-0	GENERAL TOLERANCES (UNLESS SPECIFIED)		SCALE 1:1	DESIGN UNITS INCH	THIRD ANGLE PROJECTION		REVISE ON CAD ONLY	
					DIMENSION STYLE IN/MM		TITLE WEATHERTIGHT MALE/FEMALE BOOT ASSY, 16-12 AWG, ROMEX CABLE, SC			
			4 PLACES	±---	±---	DRAWN BY DMYRICK	DATE 04/01/06	MOLEX INCORPORATED		
			3 PLACES	±---	±---	CHECKED BY JPAWLICK	DATE 04/01/06			
			2 PLACES	±---	±.025	APPROVED BY RDEROSS	DATE 04/01/06			
			1 PLACE	±0.64	±---	MATERIAL NO. SEE DRAWING				
			ANGULAR ± 2 °		DOCUMENT NO. SD-19425-001		SHEET NO. 1 OF 1			
			DRAFT WHERE APPLICABLE		THIS DRAWING CONTAINS INFORMATION THAT IS PROPRIETARY TO MOLEX INCORPORATED AND SHOULD NOT BE USED WITHOUT WRITTEN PERMISSION					
			MUST REMAIN WITHIN DIMENSIONS							

11 10 9 8 7 6 5 4 3 2 1