



Chipsmall Limited consists of a professional team with an average of over 10 year of expertise in the distribution of electronic components. Based in Hongkong, we have already established firm and mutual-benefit business relationships with customers from,Europe,America and south Asia,supplying obsolete and hard-to-find components to meet their specific needs.

With the principle of “Quality Parts,Customers Priority,Honest Operation,and Considerate Service”,our business mainly focus on the distribution of electronic components. Line cards we deal with include Microchip,ALPS,ROHM,Xilinx,Pulse,ON,Everlight and Freescale. Main products comprise IC,Modules,Potentiometer,IC Socket,Relay,Connector.Our parts cover such applications as commercial,industrial, and automotives areas.

We are looking forward to setting up business relationship with you and hope to provide you with the best service and solution. Let us make a better world for our industry!



Contact us

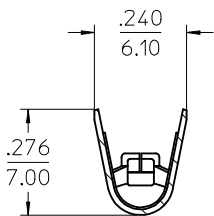
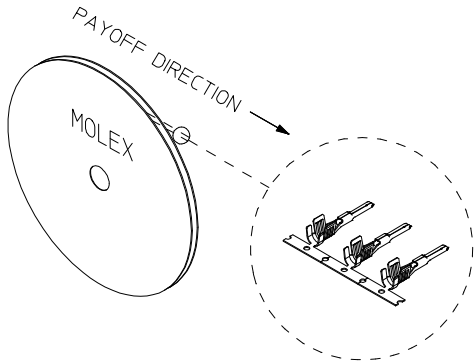
Tel: +86-755-8981 8866 Fax: +86-755-8427 6832

Email & Skype: info@chipsmall.com Web: www.chipsmall.com

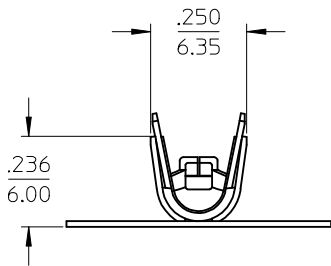
Address: A1208, Overseas Decoration Building, #122 Zhenhua RD., Futian, Shenzhen, China



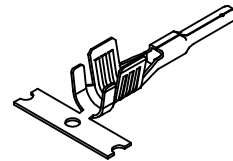
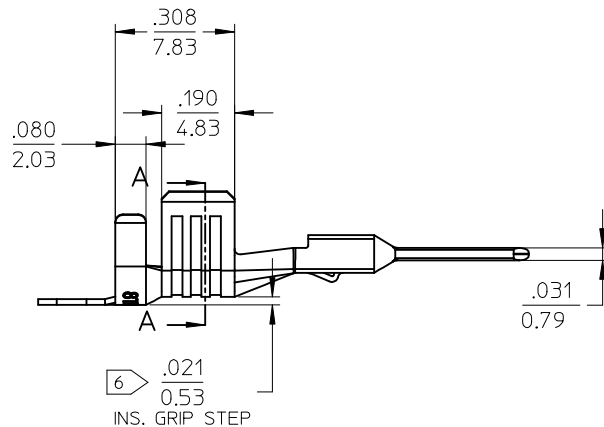
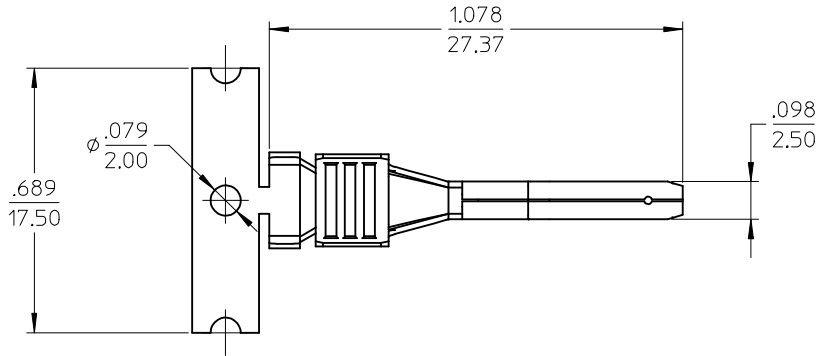
STRIP MATERIAL NUMBER	LOOSE PIECE MATERIAL NUMBER	AWG SIZE	WIRE INSULATION DIAMETER
194310056	194310057	8 TW	.153-.191" (3.90-4.85MM)



SECTION A-A
CONDUCTOR GRIP



INSULATION GRIP



- NOTES:
- MATERIAL: COPPER ALLOY.
 - FINISH: PREPLATED AND REFLOWED OVERALL.
100μ TIN OVER 50μ NICKEL, MINIMUM.
 - DO NOT USE TERMINALS WITH 19433**** PLUG HOUSINGS.
 - PACKAGING SPECIFICATION: PK-19431-001 FOR LOOSE TERMINALS.
STRIP PARTS ARE REELED 2000 TERMINALS PER REEL. (B)
 - APPLICATION TOOLING AND CRIMP SPECIFICATIONS: CONSULT FACTORY
 - INSULATION GRIP STEP DIMENSION NOT TO BE ALTERED BY CRIMP PROCESS.
 - ALL DIMENSIONS ARE REFERENCE.

CHG REEL QTY FROM 2500		2014/07/31		DESCRIPTION	QUALITY SYMBOLS	GENERAL TOLERANCES (UNLESS SPECIFIED)		DIMENSION STYLE		SCALE	DESIGN UNITS	THIRD ANGLE PROJECTION			
EC NO: IPG2015-0205		2014/07/31						IN/MM		4:1	INCH				
DRAWN: WLEUNG		2014/07/31				▽=0		mm INCH		DRAWN BY DATE		TITLE		MX150L MALE TERMINAL 8AWG TW (THIN WALL INSULATION)	
CHKD: TWOLDEGE		2014/07/31				▽=0		4 PLACES ± --- ± ---		WLEUNG 2012/11/26					
APPR: BWOODMAN		2014/08/12				3 PLACES ± --- ± .010		CHECKED BY DATE							
REV		B				2 PLACES ± 0.25 ± .02		BRUPERT 2013/09/06		DOCUMENT NO.		SHEET NO.			
						1 PLACE ± 0.5 ± ---		APPROVED BY DATE							
						0 PLACE ± --- ± ---		JFMURPHY 2013/12/26							
						ANGULAR ± 3 °		MATERIAL NO.							
						DRAFT WHERE APPLICABLE MUST REMAIN WITHIN DIMENSIONS		SEE CHART		SD-19431-003		1 OF 1			
								SIZE C				THIS DRAWING CONTAINS INFORMATION THAT IS PROPRIETARY TO MOLEX INCORPORATED AND SHOULD NOT BE USED WITHOUT WRITTEN PERMISSION			