



Chipsmall Limited consists of a professional team with an average of over 10 year of expertise in the distribution of electronic components. Based in Hongkong, we have already established firm and mutual-benefit business relationships with customers from,Europe,America and south Asia,supplying obsolete and hard-to-find components to meet their specific needs.

With the principle of “Quality Parts,Customers Priority,Honest Operation,and Considerate Service”,our business mainly focus on the distribution of electronic components. Line cards we deal with include Microchip,ALPS,ROHM,Xilinx,Pulse,ON,Everlight and Freescale. Main products comprise IC,Modules,Potentiometer,IC Socket,Relay,Connector.Our parts cover such applications as commercial,industrial, and automotives areas.

We are looking forward to setting up business relationship with you and hope to provide you with the best service and solution. Let us make a better world for our industry!



Contact us

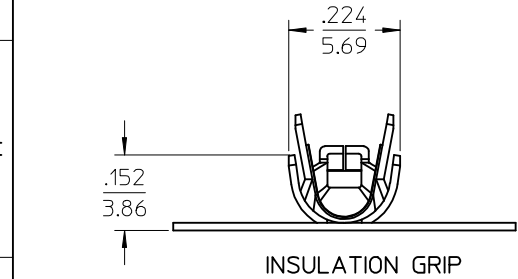
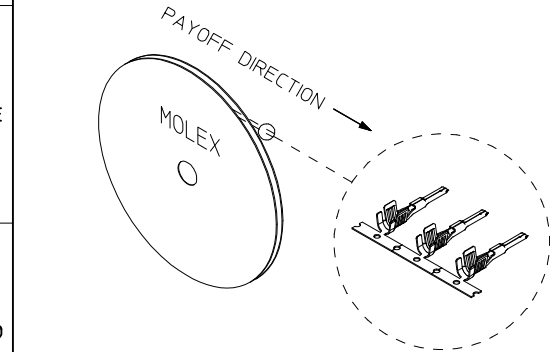
Tel: +86-755-8981 8866 Fax: +86-755-8427 6832

Email & Skype: info@chipsmall.com Web: www.chipsmall.com

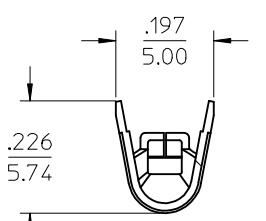
Address: A1208, Overseas Decoration Building, #122 Zhenhua RD., Futian, Shenzhen, China



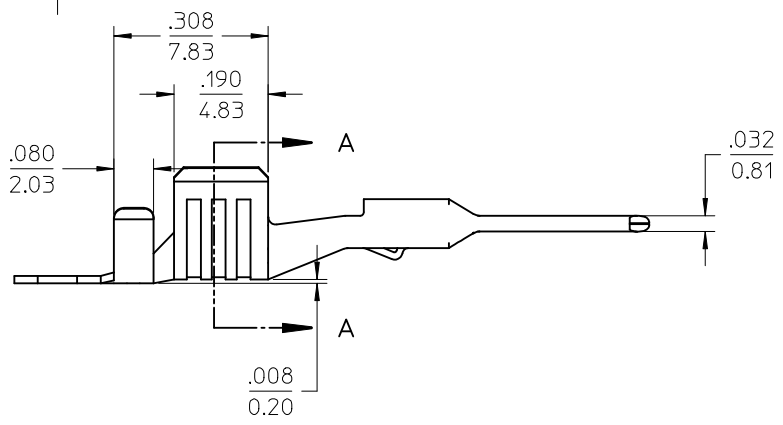
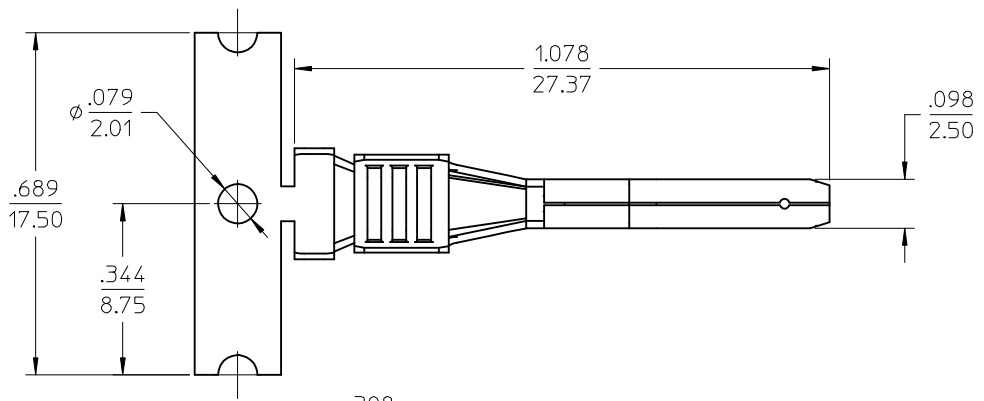
	10	9	8	7	6	5	4	3	2	1
	STRIP MATERIAL NUMBER	LOOSE PIECE MATERIAL NUMBER	AWG SIZE (MM²)		WIRE INSULATION DIAMETER					
F	194310064	194310065	12AWG TW (3.00MM²)		.122"-.134" (3.10MM-3.40MM)					



INSULATION GRIP

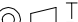


Section A-A
CONDUCTOR GRIP



6 INS. GRIP STEP

- NOTES:
1. MATERIAL: COPPER ALLOY.
 2. FINISH: PREPLATED AND REFLOWED OVERALL.
100µ TIN OVER 50µ NICKEL, MINIMUM.
 3. DO NOT USE TERMINALS WITH 19433**** PLUG HOUSINGS.
 4. PACKAGING SPECIFICATION: PK-19431-001 FOR LOOSE TERMINALS.
STRIP PARTS ARE REELED 2500 TERMINALS PER REEL.
 5. APPLICATION TOOLING AND CRIMP SPECIFICATIONS: CONSULT FACTORY
 - 6 INSULATION GRIP STEP DIMENSION NOT TO BE ALTERED BY CRIMP PROCESS.
 7. ALL DIMENSIONS ARE REFERENCE.

UPDATE WIRE AWG EC NO: IPG2014-1616 2014/03/13 DRAWN:WLEUNG 2014/03/13 CHKD:BRUPERT 2014/03/30 APPR:BMWOODMAN 2014/03/30			DESCRIPTION REV	QUALITY SYMBOLS <div>▽=0</div> <div>▽=0</div> <div>▽=0</div>	GENERAL TOLERANCES (UNLESS SPECIFIED)			DIMENSION STYLE IN/MM		SCALE 4:1	DESIGN UNITS INCH	 THIRD ANGLE PROJECTION
					mm	INCH	DRAWN BY WLEUNG	DATE 2013/12/12	TITLE MALE PIN TERMINAL, 12AWG TW (3.0MM/2) THIN WALL INSULATION molex	DOCUMENT NO. SD-19431-004	SHEET NO. 1 OF 1	
4 PLACES					± ---	± ---	CHECKED BY	DATE				
3 PLACES					± ---	± .010	BRUPERT	2013/12/13				
2 PLACES					± 0.25	± .02	APPROVED BY	DATE				
1 PLACE					± 0.5	± ---						
0 PLACE					± ---	± ---						
			ANGULAR ± 3 °			MATERIAL NO.						
			DRAFT WHERE APPLICABLE MUST REMAIN WITHIN DIMENSIONS			SEE CHART						
						SIZE B	THIS DRAWING CONTAINS INFORMATION THAT IS PROPRIETARY TO MOLEX INCORPORATED AND SHOULD NOT BE USED WITHOUT WRITTEN PERMISSION					