



Chipsmall Limited consists of a professional team with an average of over 10 year of expertise in the distribution of electronic components. Based in Hongkong, we have already established firm and mutual-benefit business relationships with customers from,Europe,America and south Asia,supplying obsolete and hard-to-find components to meet their specific needs.

With the principle of “Quality Parts,Customers Priority,Honest Operation,and Considerate Service”,our business mainly focus on the distribution of electronic components. Line cards we deal with include Microchip,ALPS,ROHM,Xilinx,Pulse,ON,Everlight and Freescale. Main products comprise IC,Modules,Potentiometer,IC Socket,Relay,Connector.Our parts cover such applications as commercial,industrial, and automotives areas.

We are looking forward to setting up business relationship with you and hope to provide you with the best service and solution. Let us make a better world for our industry!



Contact us

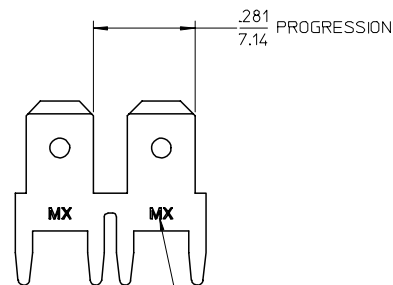
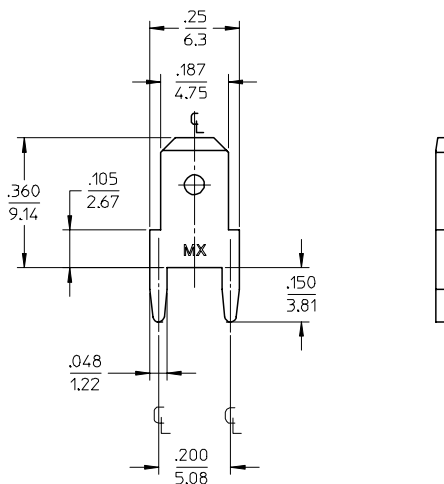
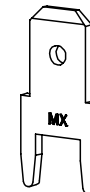
Tel: +86-755-8981 8866 Fax: +86-755-8427 6832

Email & Skype: info@chipsmall.com Web: www.chipsmall.com

Address: A1208, Overseas Decoration Building, #122 Zhenhua RD., Futian, Shenzhen, China

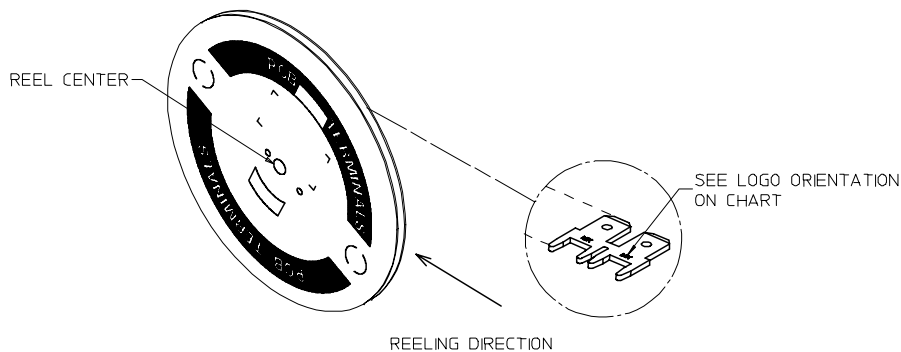
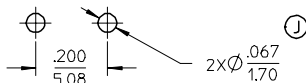


MATERIAL NUMBER	ENGINEERING NUMBER	CARRIER	TAB THICKNESS	LOGO ORIENTATION
197084003	19708-4003	STRIP	.020/0.51	IN
197084013	19708-4013	STRIP	.032/0.81	
197084015	19708-4015	STRIP	.032/0.81	
197084001	19708-4001	LOOSE	.020/0.51	-
197084011	19708-4011	LOOSE	.032/0.81	-



LOGO OPTIONS:
MX, ETC. OR MX-ETC

RECOMMENDED PCB
HOLE LAYOUT



NOTES:

1. BARE EDGES PERMISSIBLE AT CARRIER CUT OFF.
2. MATERIAL: BRASS C26000
3. MATERIAL THICKNESS: SEE CHART
4. TAB CONFORMS TO NEMA SPECIFICATIONS.
5. ALL DIMENSIONS AND NOTES REFERENCE UNLESS OTHERWISE NOTED.
6. PLATING: MATTE TIN, 150μN/3.81μmm MINIMUM THICKNESS OVER NICKEL 50μN/1.25μmm MINIMUM THICKNESS.
7. REF.: 15,000 MINIMUM PARTS PER REEL, REEL HAS 14" DIAMETER REEL WITH A 1.25" DIAMETER CENTER HOLE.
8. PART IS ROHS COMPLIANT.

REV	DESCRIPTION	QUALITY SYMBOLS	GENERAL TOLERANCES (UNLESS SPECIFIED)		DIMENSION STYLE		SCALE	DESIGN UNITS	THIRD ANGLE PROJECTION	
			mm	INCH	IN/MM	DATE	TITLE	INCH	INCH	INCH
J	ADD LOOSE PC - REV PCB HOLE EC NO: ETC2007-0403 DRAWN:HEILE 2007/05/14 CHKD:IMACNEIL 2007/05/14 APPR:IMACNEIL 2007/05/15	▽=0 ▽=0	4 PLACES ± --- ± ---	JH	DRAWN BY	DATE	4:1	INCH	QUICK DISCONNECT PCB MOUNTABLE .187 X .032/.020 TAB	
			3 PLACES ± --- ± .005	RWD	CHECKED BY	DATE			MOLEX MOLEX INCORPORATED	
			2 PLACES ± 0.13 ± .01	RWD	APPROVED BY	DATE			SD-19708-400	
			1 PLACE ± 0.25 ± ---	RWD	MATERIAL NO.	DATE			SHEET NO. 1 OF 1	
			ANGULAR ± 1 °		SEE CHART					
					DRAFT WHERE APPLICABLE MUST REMAIN WITHIN DIMENSIONS					
					THIS DRAWING CONTAINS INFORMATION THAT IS PROPRIETARY TO MOLEX INCORPORATED AND SHOULD NOT BE USED WITHOUT WRITTEN PERMISSION					