



Chipsmall Limited consists of a professional team with an average of over 10 year of expertise in the distribution of electronic components. Based in Hongkong, we have already established firm and mutual-benefit business relationships with customers from,Europe,America and south Asia,supplying obsolete and hard-to-find components to meet their specific needs.

With the principle of "Quality Parts,Customers Priority,Honest Operation,and Considerate Service",our business mainly focus on the distribution of electronic components. Line cards we deal with include Microchip,ALPS,ROHM,Xilinx,Pulse,ON,Everlight and Freescale. Main products comprise IC,Modules,Potentiometer,IC Socket,Relay,Connector.Our parts cover such applications as commercial,industrial, and automotives areas.

We are looking forward to setting up business relationship with you and hope to provide you with the best service and solution. Let us make a better world for our industry!



Contact us

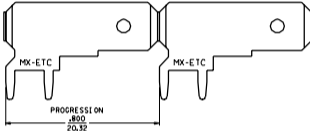
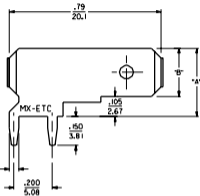
Tel: +86-755-8981 8866 Fax: +86-755-8427 6832

Email & Skype: info@chipsmall.com Web: www.chipsmall.com

Address: A1208, Overseas Decoration Building, #122 Zhenhua RD., Futian, Shenzhen, China



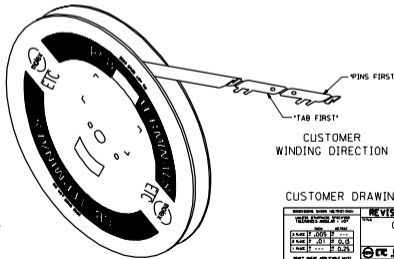
PIN ORIENTATION	MATERIAL NUMBER	ENGINEERING NUMBER	CUSTOMER NUMBER	CARRIER	PLATING SEE NOTE 6 & 7.	DIMENSION "A"	DIMENSION "B"
TAB FIRST	197134001	19713-4001	4000	LOOSE	TIN/LEAD	.356	.250
TAB FIRST	197134003	19713-4003	-	STRIP	TIN/LEAD	.356	.250
PINS FIRST	197134004	19713-4004	-	STRIP	TIN/LEAD	.356	.250



ISOMETRIC VIEW



RECOMMENDED P.W.B. HOLE LAYOUT



CUSTOMER WINDING DIRECTION

CUSTOMER DRAWING

- NOTES:
1. BARE EDGES PERMISSIBLE AT CARRIER CUT OFF.
 2. MATERIAL: BRASS.
 3. MATERIAL THICKNESS: .032 \pm .001 \pm 10.813 \pm 0.031
 4. TAB CONFORMS TO NEMA SPECIFICATIONS.
 5. ALL DIMENSIONS AND NOTES ARE REFERENCE ONLY UNLESS NOTED.
 6. PLATING: 90/10 TIN LEAD 150M 1inX3.8M in MIN THICKNESS.
 7. FINISH: MATTE

REV	REVISIONS
F	CHANGED FINISH ETC0010131 BPE 09/21/2000
E	FINISH CHANGE ETC0010131 2000/08/29 MEB
D	ADDED ORIENTATION ETC0010131 08/16/2000 BPE
C	ADD PART NO. 08/24/00 ET1999-0262
B	REMOVE NON-PLATED PARTS FROM CARRIER ETC0353 ET/0/0 JH
A	RELEASE TO CUSTOMER ETB0108 09/05/01

REVISIONS

REVISE ONLY ON CAD SYSTEM

QUICK DISCONNECT
PCB MOUNTABLE
.250 X .032 TAB

ETC INC. PART NO. SD-19713-400
1 OF 1 98/04/28

SEE CHART

DATE: JH BY: RWJ
TIN: 01/2000
DWG: 5C 1