



Chipsmall Limited consists of a professional team with an average of over 10 year of expertise in the distribution of electronic components. Based in Hongkong, we have already established firm and mutual-benefit business relationships with customers from,Europe,America and south Asia,supplying obsolete and hard-to-find components to meet their specific needs.

With the principle of "Quality Parts,Customers Priority,Honest Operation,and Considerate Service",our business mainly focus on the distribution of electronic components. Line cards we deal with include Microchip,ALPS,ROHM,Xilinx,Pulse,ON,Everlight and Freescale. Main products comprise IC,Modules,Potentiometer,IC Socket,Relay,Connector.Our parts cover such applications as commercial,industrial, and automotives areas.

We are looking forward to setting up business relationship with you and hope to provide you with the best service and solution. Let us make a better world for our industry!



Contact us

Tel: +86-755-8981 8866 Fax: +86-755-8427 6832

Email & Skype: info@chipsmall.com Web: www.chipsmall.com

Address: A1208, Overseas Decoration Building, #122 Zhenhua RD., Futian, Shenzhen, China





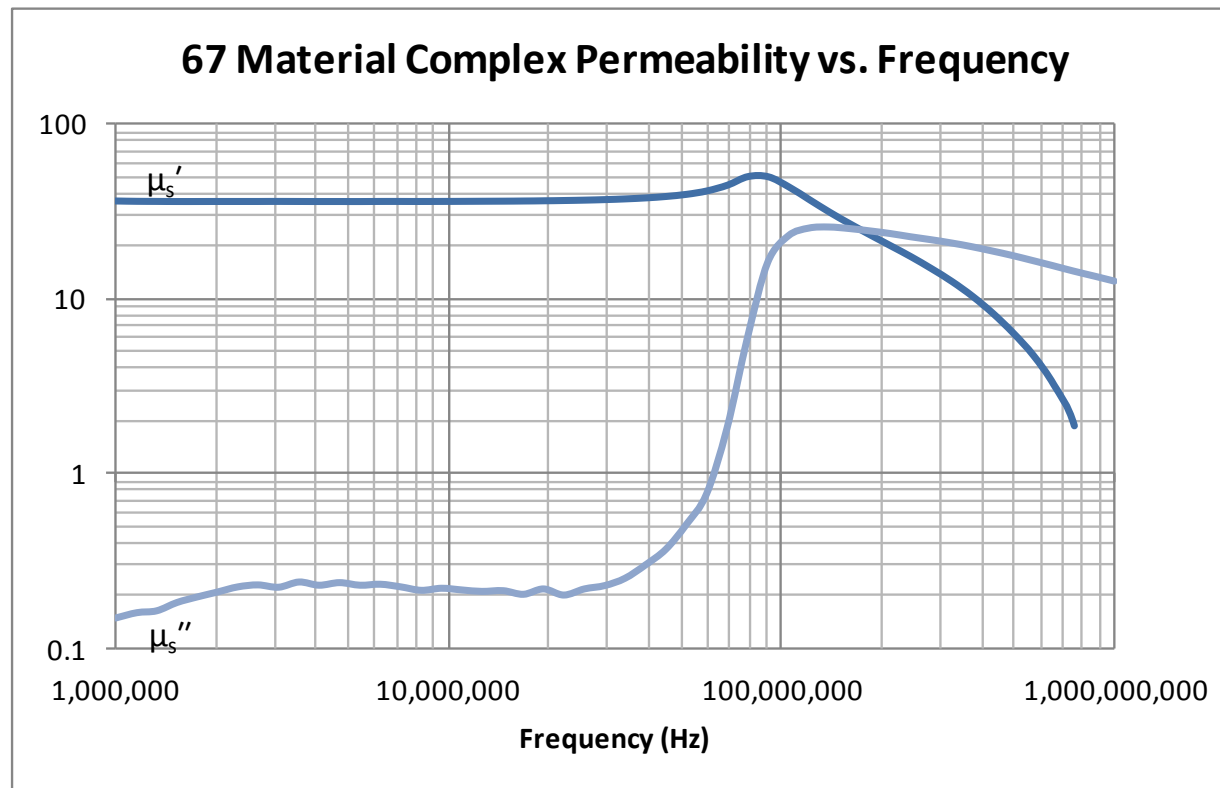
Fair-Rite Products Corp.

Your Signal Solution®

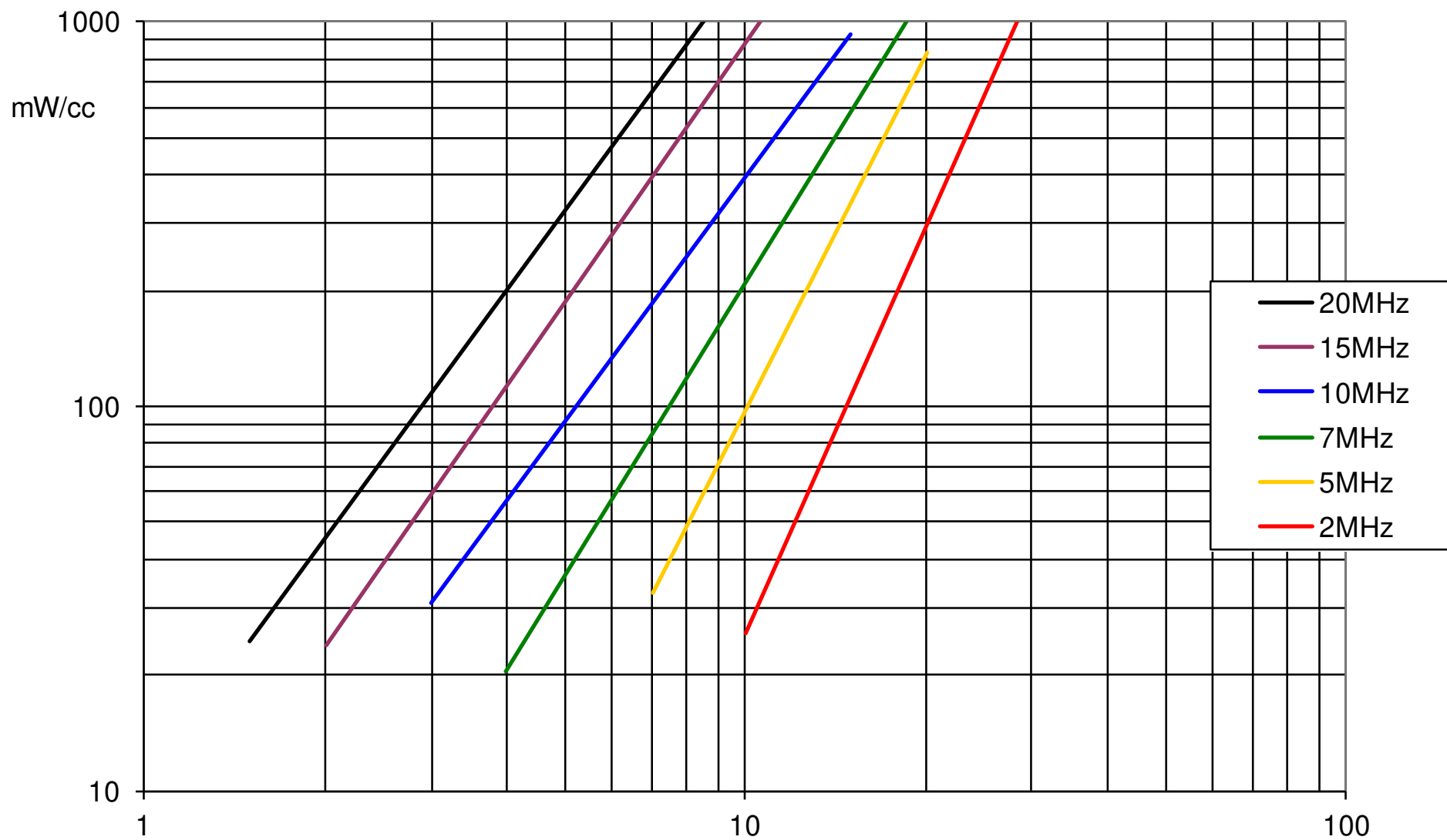
HF MINI POWER KIT

Featuring 67 Material

Fair-Rite's 67 is a high-frequency NiZn ferrite material with an initial permeability of 40.

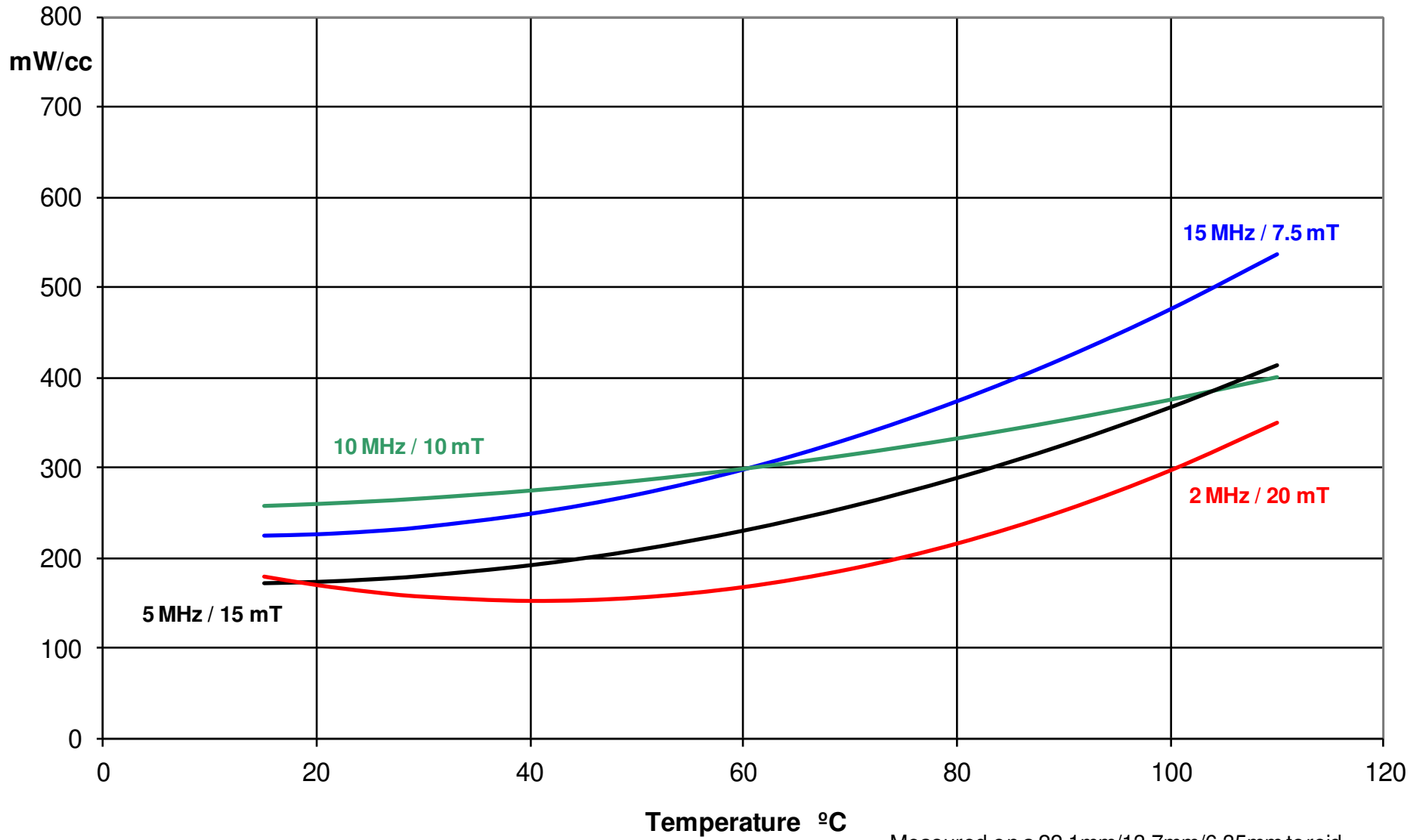


67 material Specific Power Loss vs. Flux Density at 100°C



Flux Density mT Measured on a 22.1mm/13.7mm/6.35mm toroid at 100°C.

67 Material Specific Power Loss vs. Temperature



			values are nominal unless otherwise indicated							
refer to figure 2 and 3 for EQ shapes			mm	mm	mm	mm	mm	mm	mm	mm
	FR PN	generic size	A	B	C	D	E	F	G	
see fig. 2	9567130302	EQ13/8.7/2.9	12.8	2.85	8.7	1.75	11.2	5	8.75	min
see fig. 3	9367053002	I13/8.7/1.1	12.8	1.1	8.7					
see fig. 2	9567200602	EQ20/14/6.4	20	6.35	14	4.1	18	8.8	12.5	min
see fig. 3	9367054002	I20/14/2.3	20	2.3	14					
see fig. 2	9567250802	EQ25/18/8	25	8	18	5.15	22	11	14.5	min
see fig. 2	9567250602	EQ25/18/5.6	25	5.6	18	3.15	22	11	14.5	min
see fig. 3	9367055002	I25/18/2.3	25	2.3	18					
refer to figure 1 for toroids			mm	mm	mm	1/cm	cm	cm ²	cm ³	nominal nH/T ²
	FR PN	generic size	A	B	C	C1 (Σ I/A)	le	Ae	Ve	Al
see fig. 1	5967000201	T9.5/4.8/3.2	9.5	4.75	3.2	28.6	2.07	0.072	0.15	18
see fig. 1	5967001801	T22/14/6.4	22.1	13.7	6.35	20.7	5.4	0.262	1.42	24
see fig. 1	5967001001	T29/19/7.5	29	19	7.5	19.8	7.3	0.37	2.7	25
			mm	mm	mm	1/cm	cm	cm ²	cm ³	minimum nH/T ²
FR PN	FR PN	generic size	overall height		C1 (Σ I/A)	le	Ae	Ve	Al	
9567130302	9567130302	EEQ13/6	5.7		8.56	1.74	0.20	0.35	45	
9567130302	9367053002	EQI 13/4	3.95		6.97	1.39	0.20	0.28	56	
9567200602	9567200602	EEQ20/13	12.7		5.53	3.33	0.60	2.01	71	
9567200602	9367054002	EQI 20/9	8.65		4.12	2.52	0.61	1.54	95	
9567250802	9567250802	EEQ25/16	16		4.14	4.15	1.00	4.17	94	
9567250802	9367055002	EQI 25/10	10.3		3.22	3.08	0.96	2.94	122	
9567250602	9567250602	EEQ25/11	11.2		3.52	3.28	0.93	3.06	110	
9567250602	9367055002	EQI 25/8	7.9		2.93	2.64	0.90	2.39	132	
9567250802	9567250602	EEQ25/14	13.6		3.82	3.72	0.97	3.62	102	

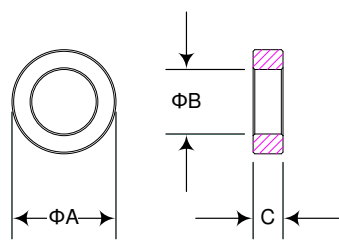


Figure 1

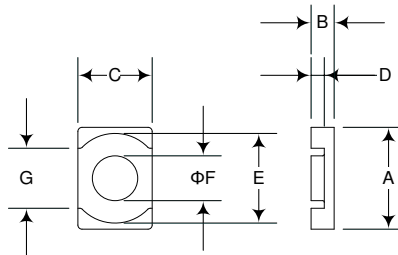


Figure 2

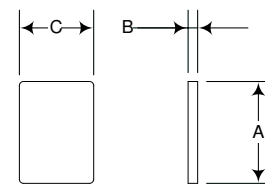


Figure 3