



Chipsmall Limited consists of a professional team with an average of over 10 year of expertise in the distribution of electronic components. Based in Hongkong, we have already established firm and mutual-benefit business relationships with customers from,Europe,America and south Asia,supplying obsolete and hard-to-find components to meet their specific needs.

With the principle of “Quality Parts,Customers Priority,Honest Operation,and Considerate Service”,our business mainly focus on the distribution of electronic components. Line cards we deal with include Microchip,ALPS,ROHM,Xilinx,Pulse,ON,Everlight and Freescale. Main products comprise IC,Modules,Potentiometer,IC Socket,Relay,Connector.Our parts cover such applications as commercial,industrial, and automotives areas.

We are looking forward to setting up business relationship with you and hope to provide you with the best service and solution. Let us make a better world for our industry!



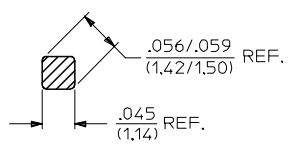
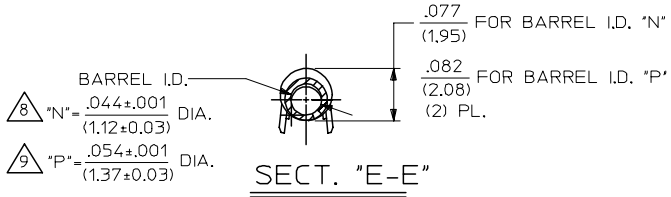
## Contact us

Tel: +86-755-8981 8866 Fax: +86-755-8427 6832

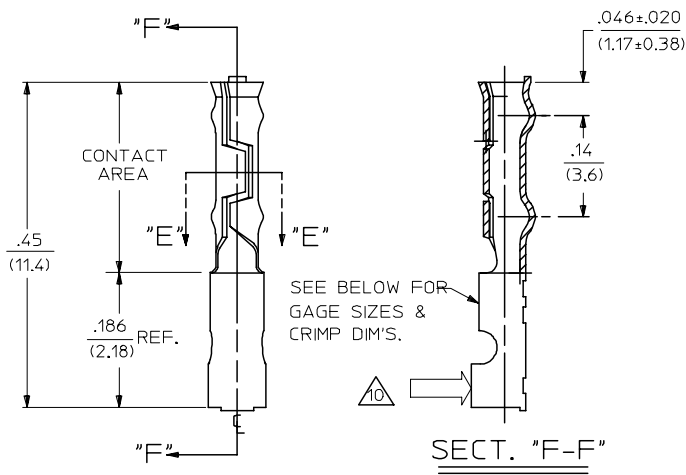
Email & Skype: info@chipsmall.com Web: www.chipsmall.com

Address: A1208, Overseas Decoration Building, #122 Zhenhua RD., Futian, Shenzhen, China

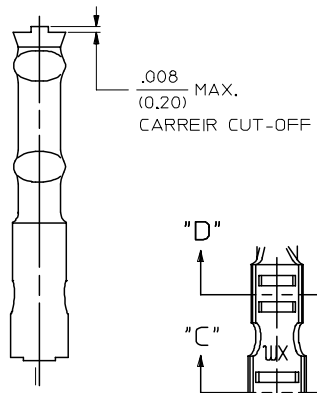




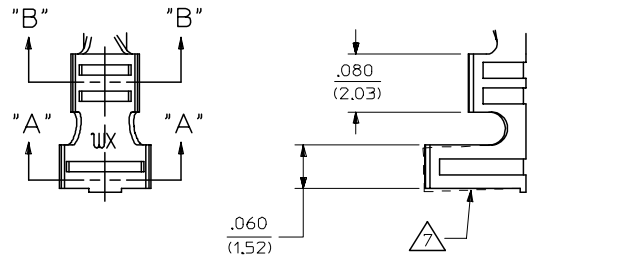
CROSS SECTION OF .045/(1.14) SQUARE PIN.  
FOR USE WITH .053/(1.35) BARREL I.D.



18-24 AWG WIRE



24-30 AWG WIRE



SECT. "A-A"

SECT. "B-B"

SECT. "C-C"

SECT. "D-D"

AM	REVISED/REDRAWN UCP2004-1861 RHOLTS 8/05/04
AL	UCR2002-0270 COMERCI 01/10/11
AK2	REL -2C6P2 ECR #U6 1169 3-26-96 RW
AK1	REL -2B5P2 ECR #U1 0762 4-10-91 RW
AK	REVISE EDP NO. PER ECR U0 0828 GC 10/18/90 RW
AJ	REL -1B6P2, REV. NOTE 9, #U0 0812 10-15-90 RW
AH	REL -2H6P1 ECR #U0 0437 GC 7/12/90 RW
AG	REL -2C5P1 ECR #U0 0225 2-23-90 RW
AF	ADD -P108 OPTION ECR #U9 1253 1-15-90 RW
AE	REL -1B5P1-1B5P2 ECR #U9 1139 11-2-89 RW
AD	REVISED PER ECR #U9 0604 08-11-89 RW
AC	REV. & REDRAWN ECR U6 1148 SEP 9-8-87 RW

REVISED/REDRAWN EC NO: UCP2004-1861 DRW:RHOLTS 2004/08/06 CHKD:FSMITH 2004/08/09 APPR:FSMITH 2004/08/10	QUALITY SYMBOLS ▽ = 0 ▽ = 0	GENERAL TOLERANCES (UNLESS SPECIFIED)	SCALE 8:1	DESIGN UNITS INCH	THIRD ANGLE PROJECTION	REVISE ON CAD ONLY													
		<table border="1"> <tr> <th></th> <th>mm</th> <th>INCH</th> </tr> <tr> <td>4 PLACES</td> <td>± .005</td> <td>± .0005</td> </tr> <tr> <td>3 PLACES</td> <td>± .010</td> <td>± .0010</td> </tr> <tr> <td>2 PLACES</td> <td>± 0.13</td> <td>± .010</td> </tr> <tr> <td>1 PLACE</td> <td>± 0.25</td> <td>± .010</td> </tr> </table>		mm	INCH	4 PLACES	± .005	± .0005	3 PLACES	± .010	± .0010	2 PLACES	± 0.13	± .010	1 PLACE	± 0.25	± .010	DIMENSION STYLE IN/MM	TITLE
	mm	INCH																	
4 PLACES	± .005	± .0005																	
3 PLACES	± .010	± .0010																	
2 PLACES	± 0.13	± .010																	
1 PLACE	± 0.25	± .010																	
AM	DESCRIPTION	DRAFT WHERE APPLICABLE MUST REMAIN WITHIN DIMENSIONS	DRAWN BY GEO	DATE 1987/09/18	MOLEX INCORPORATED														
			CHECKED BY RW	DATE 1987/09/18	MATERIAL NO. SEE CHART	DOCUMENT NO. SD-2107-*													
			APPROVED BY RAS	DATE 1987/09/18	SHEET NO. 1 OF 2														
THIS DRAWING CONTAINS INFORMATION THAT IS PROPRIETARY TO MOLEX INCORPORATED AND SHOULD NOT BE USED WITHOUT WRITTEN PERMISSION																			

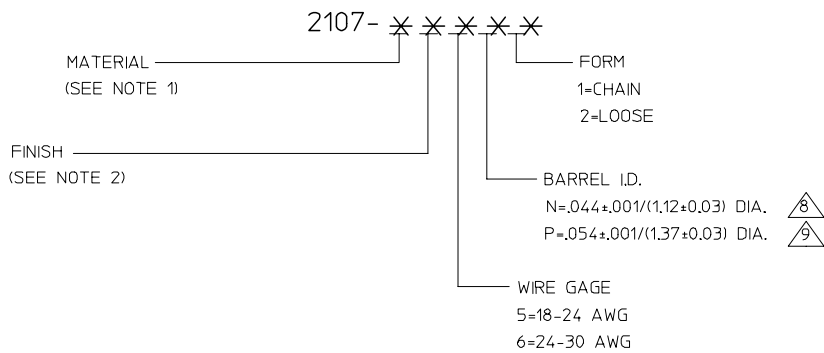
THESE TERM'S. MATE WITH  
(.14)/.045 ROUND PIN

PART NO.	ENG. NO.	OLD ENG. NO.
02-05-1116	2107-1B6N1	2107-T
02-05-1117	2107-1B6N2	2107-TL
02-05-1104	2107-1B5N1	1929-T
02-05-1105	2107-1B5N2	1929-TL
02-05-3205	2107-2A5N2	2123-L
02-05-1204	2107-2B5N1	2123-T
02-05-1205	2107-2B5N2	2123-TL
02-05-1216	2107-2B6N1	2125-T
02-05-1217	2107-2B6N2	2125-TL
REL. TO MFG.	2107-1E5N1	-----
REL. TO MFG.	2107-1E5N2	-----
REL. TO MFG.	2107-1E6N1	-----
REL. TO MFG.	2107-1E6N2	-----

THESE TERM'S. MATE WITH  
(.14)/.045 SQUARE PIN

PART NO.	ENG. NO.	OLD ENG. NO.
02-05-1115	2107-1B6P1	2107-1(P901)
02-05-1119	2107-1B6P2	2107-1(P901)L
02-05-1106	2107-1B5P1	-----
02-05-1107	2107-1B5P2	-----
REL. TO MFG.	2107-1D5P1	-----
REL. TO MFG.	2107-1D5P2	-----
REL. TO MFG.	2107-1G5P1	-----
REL. TO MFG.	2107-1G5P2	-----
REL. TO MFG.	2107-1D6P1	-----
REL. TO MFG.	2107-1D6P2	-----
REL. TO MFG.	2107-2A6P1	-----
REL. TO MFG.	2107-2A6P2	-----
REL. TO MFG.	2107-2A5P1	-----
REL. TO MFG.	2107-2A5P2	-----
02-05-1207	2107-2B5P1	-----
02-05-1208	2107-2B5P2	-----
02-05-5221	2107-2C5P1	-----
REL. TO MFG.	2107-2C5P2	-----
REL. TO MFG.	2107-2B6P1	-----
REL. TO MFG.	2107-2B6P2	-----
02-05-5223	2107-2C6P1	-----
REL. TO MFG.	2107-1E5P1	-----
REL. TO MFG.	2107-1E5P2	-----
REL. TO MFG.	2107-1E6P1	-----
REL. TO MFG.	2107-1E6P2	-----
02-05-5330	2107-2F5P1	-----
REL. TO MFG.	2107-2F5P2	-----
02-05-5332	2107-2F6P1	-----
REL. TO MFG.	2107-2F6P2	-----

**LEGEND**



- NOTES:
- MATERIALS:
    - 1= CARTRIDGE BRASS
    - 2= PHOSPHOR BRONZE
  - FINISHES:
    - A= (.999) UNPLATED
    - B= (P901) HOT TIN DIP .000020/(0.0005) MIN.
    - C= (P555) SELECT GOLD PLATE .000015/(0.00038) MIN. IN CONTACT AREA OVER .000030/(0.00076) MIN. NICKEL OVERALL.
    - D= (P562) SELECT GOLD PLATE .000020/(0.0005) MIN. IN CONTACT AREA OVER .000030/(0.00076) MIN. NICKEL OVERALL.
    - E= (P108) ELECTRO TIN PLATE .000035/(0.00089) MIN. OVER .000020/(0.0005) MIN. COPPER OVERALL.
    - F= (P561) SELECT GOLD PLATE .000030/(0.00076) MIN. IN CONTACT AREA OVER .000050/(0.00127) MIN. NICKEL OVERALL.
    - G= (P550) SELECT GOLD PLATE .000015/(0.00038) MIN. IN CONTACT AREA OVER .000030/(0.00076) MIN. NICKEL OVERALL WITH .000010/(0.00025) MAX. GOLD FLASH OVERALL.
  - PRODUCT SPECIFICATION: NOT AVAILABLE
  - PACKAGING INFORMATION: NOT AVAILABLE
  - THESE TERMINALS FOR USE WITH .045/(.14) ROUND AND SQUARE PINS.
  - THESE TERMINALS WILL ACCEPT STRANDED WIRE WITH .031/(0.79) MAX. THICK INSULATION.

7. A 2° MAX. ANGLE IS ALLOWED.
8. MATES WITH .045/(.14) ROUND PIN.
9. MATES WITH .045/(.14) SQUARE PIN.
10. WITH TERMINAL CRIMPED TO WIRE, TERMINAL TO WITHSTAND 2.5 POUNDS MINIMUM FORCE WITHOUT FRACTURE WHEN FORCE IS APPLIED IN DIRECTION SHOWN AT A RATE OF 2 IN./MIN.

REVISIONS: REV 1 AM REVISED/REDRAWN EC NO: UCP/2004-1861 DRWNR:RHOLTS 2004/08/06 CHKD:FSMITH 2004/08/09 APPR:FSMITH 2004/08/10	QUALITY SYMBOLS	GENERAL TOLERANCES (UNLESS SPECIFIED)	SCALE --- INCH	DESIGN UNITS INCH	THIRD ANGLE PROJECTION	REVISE ON CAD ONLY	
	DESCRIPTION ▽ = 0 ▽ = 0	mm INCH	DIMENSION STYLE IN/MM	TITLE	CRIMP TERMINAL, FEMALE FOR .045/(.14) PINS 18-30 AWG WIRE		
		4 PLACES ± --- ± ---	DRAWN BY GEP DATE 1987/09/18	MOLEX MOLEX INCORPORATED			
		3 PLACES ± --- ± ---	CHECKED BY RW DATE 1987/09/18				
2 PLACES ± --- ± ---	APPROVED BY RAS DATE 1987/09/18	MATERIAL NO. SEE CHART	DOCUMENT NO. SD-2107-*	SHEET NO. 2 OF 2			
1 PLACE ± --- ± ---	DRAFT WHERE APPLICABLE MUST REMAIN WITHIN DIMENSIONS		THIS DRAWING CONTAINS INFORMATION THAT IS PROPRIETARY TO MOLEX INCORPORATED AND SHOULD NOT BE USED WITHOUT WRITTEN PERMISSION				