



Chipsmall Limited consists of a professional team with an average of over 10 year of expertise in the distribution of electronic components. Based in Hongkong, we have already established firm and mutual-benefit business relationships with customers from,Europe,America and south Asia,supplying obsolete and hard-to-find components to meet their specific needs.

With the principle of “Quality Parts,Customers Priority,Honest Operation,and Considerate Service”,our business mainly focus on the distribution of electronic components. Line cards we deal with include Microchip,ALPS,ROHM,Xilinx,Pulse,ON,Everlight and Freescale. Main products comprise IC,Modules,Potentiometer,IC Socket,Relay,Connector.Our parts cover such applications as commercial,industrial, and automotives areas.

We are looking forward to setting up business relationship with you and hope to provide you with the best service and solution. Let us make a better world for our industry!



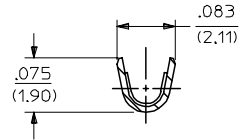
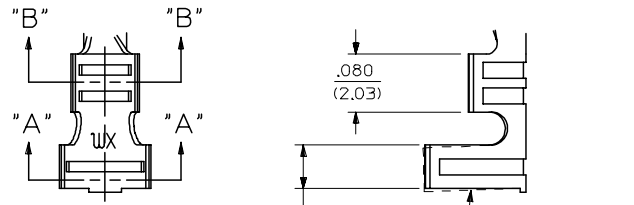
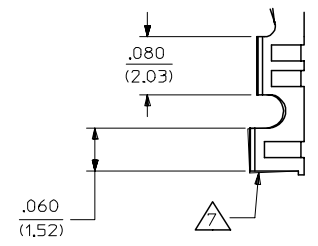
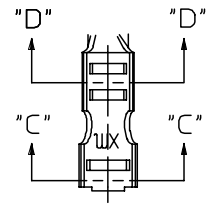
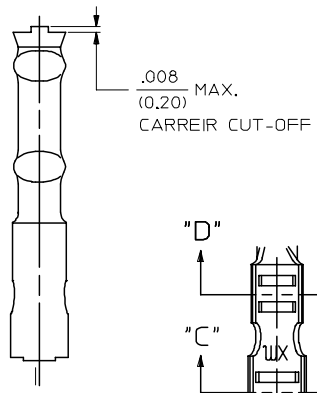
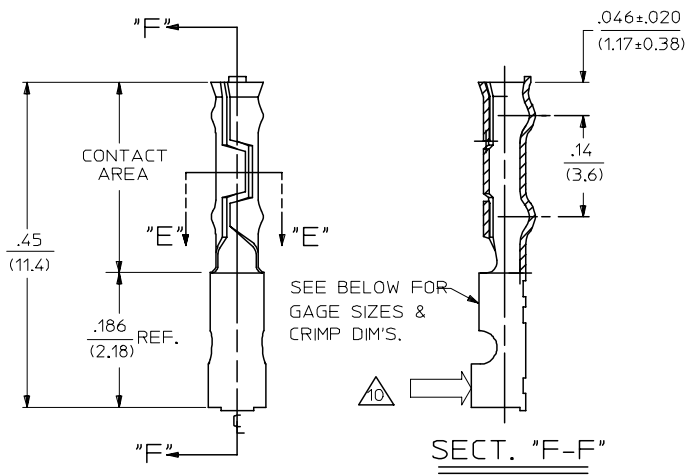
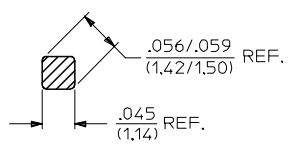
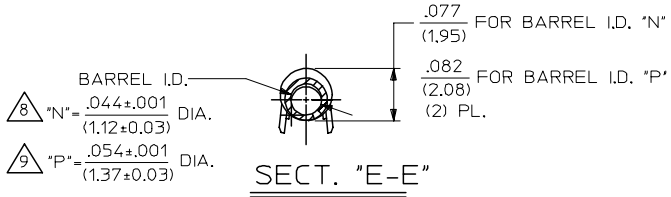
Contact us

Tel: +86-755-8981 8866 Fax: +86-755-8427 6832

Email & Skype: info@chipsmall.com Web: www.chipsmall.com

Address: A1208, Overseas Decoration Building, #122 Zhenhua RD., Futian, Shenzhen, China





| | |
|-----|---|
| AM | REVISED/REDRAWN UCP2004-1861 RHOLTS 8/05/04 |
| AL | UCR2002-0270 COMERCI 01/10/11 |
| AK2 | REL -2C6P2 ECR #U6 1169 3-26-96 RW |
| AK1 | REL -2B5P2 ECR #U1 0762 4-10-91 RW |
| AK | REVISE EDP NO. PER ECR U0 0828 GC 10/18/90 RW |
| AJ | REL -1B6P2, REV. NOTE 9, #U0 0812 10-15-90 RW |
| AH | REL -2H6P1 ECR #U0 0437 GC 7/12/90 RW |
| AG | REL -2C5P1 ECR #U0 0225 2-23-90 RW |
| AF | ADD -P108 OPTION ECR #U9 1253 1-15-90 RW |
| AE | REL -1B5P1-1B5P2 ECR #U9 1139 11-2-89 RW |
| AD | REVISED PER ECR #U9 0604 08-11-89 RW |
| AC | REV. & REDRAWN ECR U6 1148 SEP 9-8-87 RW |

| REVISED/REDRAWN EC NO: UCP2004-1861 DRW:RHOLTS 2004/08/06 CHKD:FSMITH 2004/08/09 APPR:FSMITH 2004/08/10 | QUALITY SYMBOLS ▽ = 0 ▽ = 0 | GENERAL TOLERANCES (UNLESS SPECIFIED) | SCALE 8:1 | DESIGN UNITS INCH | THIRD ANGLE PROJECTION | REVISE ON CAD ONLY | | | | | | | | | | | | | |
|---|-----------------------------------|---|-----------------|-------------------|------------------------|------------------------|--------|---------|----------|--------|---------|----------|--------|--------|---------|--------|--------|-----------------------|-------|
| | | <table border="1"> <tr> <th></th> <th>mm</th> <th>INCH</th> </tr> <tr> <td>4 PLACES</td> <td>± .005</td> <td>± .0005</td> </tr> <tr> <td>3 PLACES</td> <td>± .010</td> <td>± .0010</td> </tr> <tr> <td>2 PLACES</td> <td>± 0.13</td> <td>± .010</td> </tr> <tr> <td>1 PLACE</td> <td>± 0.25</td> <td>± .010</td> </tr> </table> | | mm | INCH | 4 PLACES | ± .005 | ± .0005 | 3 PLACES | ± .010 | ± .0010 | 2 PLACES | ± 0.13 | ± .010 | 1 PLACE | ± 0.25 | ± .010 | DIMENSION STYLE IN/MM | TITLE |
| | mm | INCH | | | | | | | | | | | | | | | | | |
| 4 PLACES | ± .005 | ± .0005 | | | | | | | | | | | | | | | | | |
| 3 PLACES | ± .010 | ± .0010 | | | | | | | | | | | | | | | | | |
| 2 PLACES | ± 0.13 | ± .010 | | | | | | | | | | | | | | | | | |
| 1 PLACE | ± 0.25 | ± .010 | | | | | | | | | | | | | | | | | |
| AM | DESCRIPTION | DRAFT WHERE APPLICABLE | DRAWN BY GEO | DATE 1987/09/18 | MOLEX INCORPORATED | | | | | | | | | | | | | | |
| | | MUST REMAIN WITHIN DIMENSIONS | CHECKED BY RW | DATE 1987/09/18 | MATERIAL NO. SEE CHART | DOCUMENT NO. SD-2107-* | | | | | | | | | | | | | |
| | | | APPROVED BY RAS | DATE 1987/09/18 | SHEET NO. 1 OF 2 | | | | | | | | | | | | | | |
| THIS DRAWING CONTAINS INFORMATION THAT IS PROPRIETARY TO MOLEX INCORPORATED AND SHOULD NOT BE USED WITHOUT WRITTEN PERMISSION | | | | | | | | | | | | | | | | | | | |

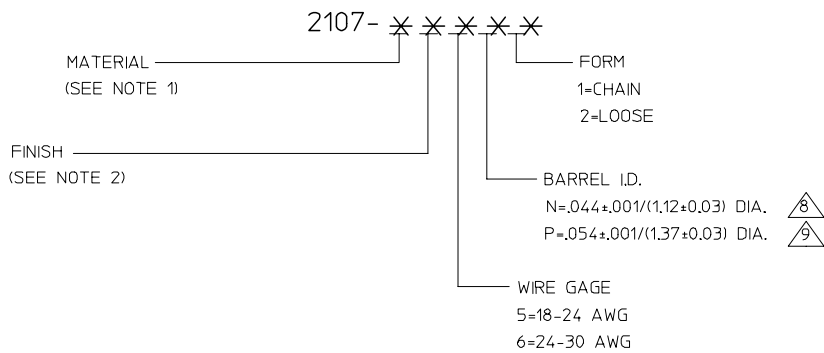
THESE TERM'S. MATE WITH
(.14)/.045 ROUND PIN

| PART NO. | ENG. NO. | OLD ENG. NO. |
|--------------|------------|--------------|
| 02-05-1116 | 2107-1B6N1 | 2107-T |
| 02-05-1117 | 2107-1B6N2 | 2107-TL |
| 02-05-1104 | 2107-1B5N1 | 1929-T |
| 02-05-1105 | 2107-1B5N2 | 1929-TL |
| 02-05-3205 | 2107-2A5N2 | 2123-L |
| 02-05-1204 | 2107-2B5N1 | 2123-T |
| 02-05-1205 | 2107-2B5N2 | 2123-TL |
| 02-05-1216 | 2107-2B6N1 | 2125-T |
| 02-05-1217 | 2107-2B6N2 | 2125-TL |
| REL. TO MFG. | 2107-1E5N1 | ----- |
| REL. TO MFG. | 2107-1E5N2 | ----- |
| REL. TO MFG. | 2107-1E6N1 | ----- |
| REL. TO MFG. | 2107-1E6N2 | ----- |

THESE TERM'S. MATE WITH
(.14)/.045 SQUARE PIN

| PART NO. | ENG. NO. | OLD ENG. NO. |
|--------------|------------|---------------|
| 02-05-1115 | 2107-1B6P1 | 2107-1(P901) |
| 02-05-1119 | 2107-1B6P2 | 2107-1(P901)L |
| 02-05-1106 | 2107-1B5P1 | ----- |
| 02-05-1107 | 2107-1B5P2 | ----- |
| REL. TO MFG. | 2107-1D5P1 | ----- |
| REL. TO MFG. | 2107-1D5P2 | ----- |
| REL. TO MFG. | 2107-1G5P1 | ----- |
| REL. TO MFG. | 2107-1G5P2 | ----- |
| REL. TO MFG. | 2107-1D6P1 | ----- |
| REL. TO MFG. | 2107-1D6P2 | ----- |
| REL. TO MFG. | 2107-2A6P1 | ----- |
| REL. TO MFG. | 2107-2A6P2 | ----- |
| REL. TO MFG. | 2107-2A5P1 | ----- |
| REL. TO MFG. | 2107-2A5P2 | ----- |
| 02-05-1207 | 2107-2B5P1 | ----- |
| 02-05-1208 | 2107-2B5P2 | ----- |
| 02-05-5221 | 2107-2C5P1 | ----- |
| REL. TO MFG. | 2107-2C5P2 | ----- |
| REL. TO MFG. | 2107-2B6P1 | ----- |
| REL. TO MFG. | 2107-2B6P2 | ----- |
| 02-05-5223 | 2107-2C6P1 | ----- |
| REL. TO MFG. | 2107-1E5P1 | ----- |
| REL. TO MFG. | 2107-1E5P2 | ----- |
| REL. TO MFG. | 2107-1E6P1 | ----- |
| REL. TO MFG. | 2107-1E6P2 | ----- |
| 02-05-5330 | 2107-2F5P1 | ----- |
| REL. TO MFG. | 2107-2F5P2 | ----- |
| 02-05-5332 | 2107-2F6P1 | ----- |
| REL. TO MFG. | 2107-2F6P2 | ----- |

LEGEND



- NOTES:
- MATERIALS:
 - 1= CARTRIDGE BRASS
 - 2= PHOSPHOR BRONZE
 - FINISHES:
 - A= (.999) UNPLATED
 - B= (P901) HOT TIN DIP .000020/(0.0005) MIN.
 - C= (P555) SELECT GOLD PLATE .000015/(0.00038) MIN. IN CONTACT AREA OVER .000030/(0.00076) MIN. NICKEL OVERALL.
 - D= (P562) SELECT GOLD PLATE .000020/(0.0005) MIN. IN CONTACT AREA OVER .000030/(0.00076) MIN. NICKEL OVERALL.
 - E= (P108) ELECTRO TIN PLATE .000035/(0.00089) MIN. OVER .000020/(0.0005) MIN. COPPER OVERALL.
 - F= (P561) SELECT GOLD PLATE .000030/(0.00076) MIN. IN CONTACT AREA OVER .000050/(0.00127) MIN. NICKEL OVERALL.
 - G= (P550) SELECT GOLD PLATE .000015/(0.00038) MIN. IN CONTACT AREA OVER .000030/(0.00076) MIN. NICKEL OVERALL WITH .000010/(0.00025) MAX. GOLD FLASH OVERALL.
 - PRODUCT SPECIFICATION: NOT AVAILABLE
 - PACKAGING INFORMATION: NOT AVAILABLE
 - THESE TERMINALS FOR USE WITH .045/(.14) ROUND AND SQUARE PINS.
 - THESE TERMINALS WILL ACCEPT STRANDED WIRE WITH .031/(0.79) MAX. THICK INSULATION.

7. A 2° MAX. ANGLE IS ALLOWED.
8. MATES WITH .045/(.14) ROUND PIN.
9. MATES WITH .045/(.14) SQUARE PIN.
10. WITH TERMINAL CRIMPED TO WIRE, TERMINAL TO WITHSTAND 2.5 POUNDS MINIMUM FORCE WITHOUT FRACTURE WHEN FORCE IS APPLIED IN DIRECTION SHOWN AT A RATE OF 2 IN./MIN.

| REVISIONS REVISED/REDRAWN EC NO: UCP/2004-1861 DRWNR:HOLTS 2004/08/06 CHKD:FSMITH 2004/08/09 APPR:FSMITH 2004/08/10 | QUALITY SYMBOLS | GENERAL TOLERANCES (UNLESS SPECIFIED) | SCALE --- INCH | DESIGN UNITS INCH | THIRD ANGLE PROJECTION | REVISE ON CAD ONLY | | | | | | | | | | | | | | | |
|--|---|---|-----------------|-------------------|--------------------------|------------------------|-------|-------|----------|-------|-------|----------|-------|-------|---------|-------|-------|-----------------------|-------|---|--|
| | DESCRIPTION ▽ = 0 ▽ = 0 | <table border="1"> <thead> <tr> <th></th> <th>mm</th> <th>INCH</th> </tr> </thead> <tbody> <tr><td>4 PLACES</td><td>± ---</td><td>± ---</td></tr> <tr><td>3 PLACES</td><td>± ---</td><td>± ---</td></tr> <tr><td>2 PLACES</td><td>± ---</td><td>± ---</td></tr> <tr><td>1 PLACE</td><td>± ---</td><td>± ---</td></tr> </tbody> </table> | | mm | INCH | 4 PLACES | ± --- | ± --- | 3 PLACES | ± --- | ± --- | 2 PLACES | ± --- | ± --- | 1 PLACE | ± --- | ± --- | DIMENSION STYLE IN/MM | TITLE | CRIMP TERMINAL, FEMALE FOR .045/(.14) PINS 18-30 AWG WIRE | |
| | | | mm | INCH | | | | | | | | | | | | | | | | | |
| | | 4 PLACES | ± --- | ± --- | | | | | | | | | | | | | | | | | |
| 3 PLACES | ± --- | ± --- | | | | | | | | | | | | | | | | | | | |
| 2 PLACES | ± --- | ± --- | | | | | | | | | | | | | | | | | | | |
| 1 PLACE | ± --- | ± --- | | | | | | | | | | | | | | | | | | | |
| DRAFT WHERE APPLICABLE MUST REMAIN WITHIN DIMENSIONS | APPROVED BY RAS | DATE 1987/09/18 | CHECKED BY RW | DATE 1987/09/18 | MOLEX MOLEX INCORPORATED | | | | | | | | | | | | | | | | |
| AM | THIS DRAWING CONTAINS INFORMATION THAT IS PROPRIETARY TO MOLEX INCORPORATED AND SHOULD NOT BE USED WITHOUT WRITTEN PERMISSION | | APPROVED BY RAS | | DATE 1987/09/18 | MATERIAL NO. SEE CHART | | | | | | | | | | | | | | | |