



Chipsmall Limited consists of a professional team with an average of over 10 year of expertise in the distribution of electronic components. Based in Hongkong, we have already established firm and mutual-benefit business relationships with customers from,Europe,America and south Asia,supplying obsolete and hard-to-find components to meet their specific needs.

With the principle of "Quality Parts,Customers Priority,Honest Operation,and Considerate Service",our business mainly focus on the distribution of electronic components. Line cards we deal with include Microchip,ALPS,ROHM,Xilinx,Pulse,ON,Everlight and Freescale. Main products comprise IC,Modules,Potentiometer,IC Socket,Relay,Connector.Our parts cover such applications as commercial,industrial, and automotives areas.

We are looking forward to setting up business relationship with you and hope to provide you with the best service and solution. Let us make a better world for our industry!



Contact us

Tel: +86-755-8981 8866 Fax: +86-755-8427 6832

Email & Skype: info@chipsmall.com Web: www.chipsmall.com

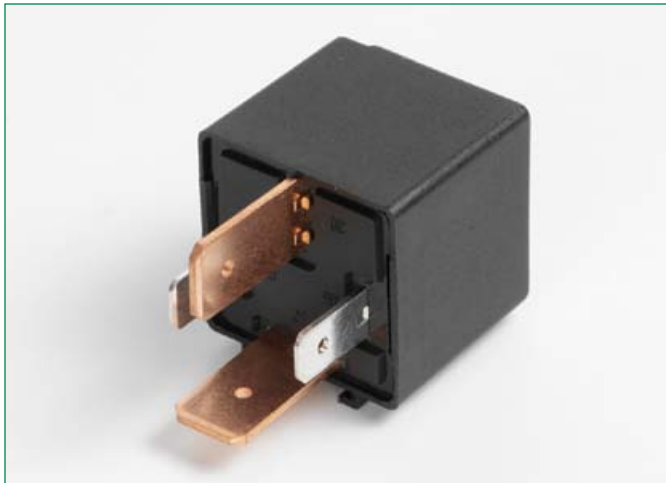
Address: A1208, Overseas Decoration Building, #122 Zhenhua RD., Futian, Shenzhen, China



STARTER Relays

RoHS

Relays



Specifications

Normally open relay

Color Case: Black

Color Base: Black

Packaging:

Series Seriens	Pack Size
020405xxTXN	10
020405xxZ	200

HOMOLOGATION IN ACCORDANCE WITH:



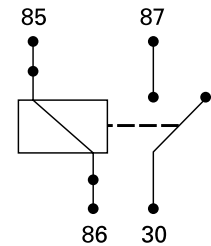
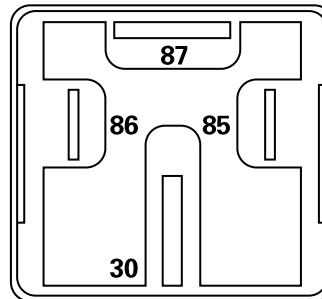
REGULATION N.10 ECE-ONU/02



EUROPEAN DIRECTIVE DIR.95/54 CE

Remote control switches for automotive applications available for 12V and 24V rated circuits.

Relais für Anwendungen im Automobilbereich, erhältlich für 12V und 24V Bordnetze.



Pins nr 30 and 87 are 9.5 mm

Normally open relay

Part Number Artikel-Nr.	Volt	Ampere	Feature Merkmal	Diagram/Schema
02040502_	12V	50A	-	A
02040501_	12V	70A	-	A
02040505_	24V	30A	-	A
02040504_	24V	40A	-	A
02040503_	24V	50A	-	A



Bracket for ISO MINI Relay or STARTER Relay

Part Number Artikel-Nr.
02040700_

Series Seriens	Pack Size
020407xxTXN	10
020407xxZ	500

Last figure of part number = packaging code, see Section "Packaging Index," pg. 149.