



Chipsmall Limited consists of a professional team with an average of over 10 year of expertise in the distribution of electronic components. Based in Hongkong, we have already established firm and mutual-benefit business relationships with customers from,Europe,America and south Asia,supplying obsolete and hard-to-find components to meet their specific needs.

With the principle of "Quality Parts,Customers Priority,Honest Operation,and Considerate Service",our business mainly focus on the distribution of electronic components. Line cards we deal with include Microchip,ALPS,ROHM,Xilinx,Pulse,ON,Everlight and Freescale. Main products comprise IC,Modules,Potentiometer,IC Socket,Relay,Connector.Our parts cover such applications as commercial,industrial, and automotives areas.

We are looking forward to setting up business relationship with you and hope to provide you with the best service and solution. Let us make a better world for our industry!



Contact us

Tel: +86-755-8981 8866 Fax: +86-755-8427 6832

Email & Skype: info@chipsmall.com Web: www.chipsmall.com

Address: A1208, Overseas Decoration Building, #122 Zhenhua RD., Futian, Shenzhen, China

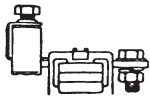


Cable Lug 32/35 mm DIN-Rail Terminals

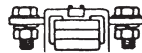
Feed Through

The Weidmüller SAKG range offers the following connection variations:

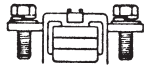
- Clamping yoke connection, Version III. The stripped conductor can be connected without further preparation.
- Lug connection, Version II. Two types of screw connection are provided here.
 - a) Screw set with lock nut
 - b) with thread in the busbar
- Clamping yoke/lug connection as a combination, Version I.



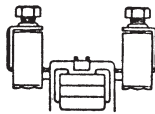
Version I



Version II
without thread



Version II G
with thread

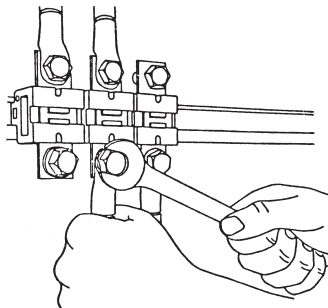


Version III

Cables with cable lugs are connected to Version I SAKG terminals and SS stud terminals.

Fitting instructions for SAKG terminals

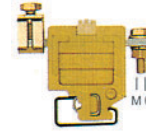
When tightening the clamping screw, it is recommended that the conductor be held against the tightening direction in order to avoid any deformation of the mounting rail and to keep the terminal foot free of torsional forces.



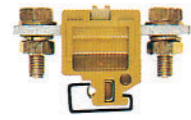
Cover

In order to ensure shock protection following connection of the conductors, Type AH hoods can be snapped onto the terminal.

SAKG 28 I



SAKG 28 II



Available Options	Version	↳	↳
	KrG	0170020000	0170320000
Dimensions			
Width / Length / Height mm (in.) with TS 35 x 7.5	↳	-	-
with TS 32	↳	28/70/63.5 (1.1/2.76/2.5)	28/70/53 (1.1/2.76/2.09)
Insulation stripping length	mm (in.)	15 (.59)	-
Technical Data			
Rated voltage / rated current / wire size	UL	600 V / 95 A / #2 AWG	600 V / 115 A / #2 AWG
	CSA	600 V / 110 A / #6...1 AWG	600 V / 135 A / #8...2 AWG
	VDE	1000 VAC / 110 A / 35 mm ²	1000 VAC / 110 A / 35 mm ²
Torque	Nm (lb. in.)	22.6 (200.0)	22.6 (200.0)
Clamping screw	M	6	6
End Plate, Hard Paper (thickness mm)	For ↳	Type Part No.	Type Part No.
	Tropic-proof	EP 1 (2) 0205100000	EP 1 (2) 0205100000
		EP 1 (2) 0205200000	EP 1 (2) 0205200000
Partition, Hard Paper (thickness mm)	For ↳		
	Tropic-proof	TW 1 (2) 0151400000	TW 1 (2) 0151400000
		TW 1 (2) 0164600000	TW 1 (2) 0164600000
Jumpers			
	Note: Final number in model indicates no. of poles (e.g. QL 2 = 2 poles). For additional information, see Accessories section.	QL 2 0193900000	QL 2 0193900000
		QL 3 0407600000	QL 3 0407600000
		QL 4 0407700000	QL 4 0407700000
Cover			
		AH 28 0326660000	AH 28 0326660000
Marking Tags			
	Note: Part numbers shown are for a single Consecutive horizontal card of pre-printed tags numbered 1-50. For additional information, see Accessories section.	DEK 5/5 0473460001	DEK 5/5 0473460001
	Consecutive vertical	DEK 5/5 0473560001	DEK 5/5 0473560001

See Accessories section for mounting rails, end brackets, test taps, additional marking material and accessories.