



Chipsmall Limited consists of a professional team with an average of over 10 year of expertise in the distribution of electronic components. Based in Hongkong, we have already established firm and mutual-benefit business relationships with customers from,Europe,America and south Asia,supplying obsolete and hard-to-find components to meet their specific needs.

With the principle of “Quality Parts,Customers Priority,Honest Operation,and Considerate Service”,our business mainly focus on the distribution of electronic components. Line cards we deal with include Microchip,ALPS,ROHM,Xilinx,Pulse,ON,Everlight and Freescale. Main products comprise IC,Modules,Potentiometer,IC Socket,Relay,Connector.Our parts cover such applications as commercial,industrial, and automotives areas.

We are looking forward to setting up business relationship with you and hope to provide you with the best service and solution. Let us make a better world for our industry!



Contact us

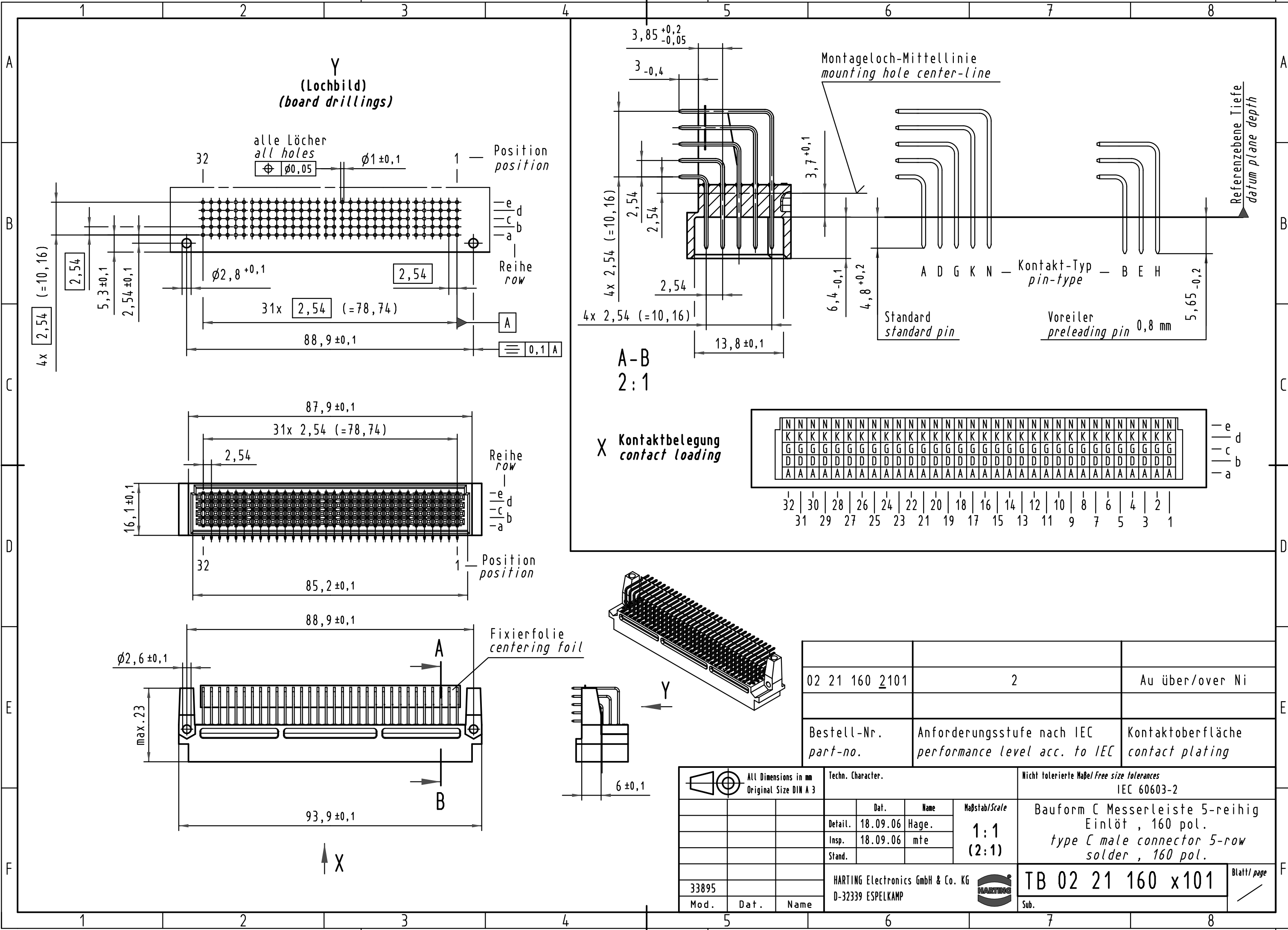
Tel: +86-755-8981 8866 Fax: +86-755-8427 6832

Email & Skype: info@chipsmall.com Web: www.chipsmall.com

Address: A1208, Overseas Decoration Building, #122 Zhenhua RD., Futian, Shenzhen, China



Alle Rechte vorbehalten/ All rights reserved



Y
(Lochbild)
(board drillings)

alle Löcher
all holes
 $\oplus \phi 0,05$ $\phi 1 \pm 0,1$

Position
position

Reihe
row

A-B
2:1

X Kontaktbelegung
contact loading

Montageloch-Mittellinie
mounting hole center-line

Referenzebene Tiefe
datum plane depth

A D G K N — Kontakt-Typ
pin-type

Standard
standard pin

Voreiler
preleading pin 0,8 mm

Reihe
row

-e
-d
-c
-b
-a

Position
position

Fixierfolie
centering foil

Y

X

02 21 160 2101	2	Au über/over Ni
Bestell-Nr. part-no.	Anforderungsstufe nach IEC performance level acc. to IEC	Kontaktoberfläche contact plating

 All Dimensions in mm Original Size DIN A 3	Techn. Character.			Nicht tolerierte Maßel/Free size tolerances IEC 60603-2	
		Dat.	Name	Maßstab/Scale 1:1 (2:1)	Bauform C Messerleiste 5-reihig Einlöt , 160 pol. type C male connector 5-row solder , 160 pol.
		Detail.	18.09.06 Hage.		
		Insp.	18.09.06 mte		
	Stand.				
33895	HARTING Electronics GmbH & Co. KG				TB 02 21 160 x101
Mod.	Dat.	Name	D-32339 ESPELKAMP		