



Chipsmall Limited consists of a professional team with an average of over 10 year of expertise in the distribution of electronic components. Based in Hongkong, we have already established firm and mutual-benefit business relationships with customers from,Europe,America and south Asia,supplying obsolete and hard-to-find components to meet their specific needs.

With the principle of “Quality Parts,Customers Priority,Honest Operation,and Considerate Service”,our business mainly focus on the distribution of electronic components. Line cards we deal with include Microchip,ALPS,ROHM,Xilinx,Pulse,ON,Everlight and Freescale. Main products comprise IC,Modules,Potentiometer,IC Socket,Relay,Connector.Our parts cover such applications as commercial,industrial, and automotives areas.

We are looking forward to setting up business relationship with you and hope to provide you with the best service and solution. Let us make a better world for our industry!



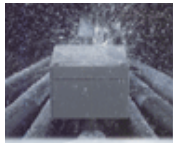
Contact us

Tel: +86-755-8981 8866 Fax: +86-755-8427 6832

Email & Skype: info@chipsmall.com Web: www.chipsmall.com

Address: A1208, Overseas Decoration Building, #122 Zhenhua RD., Futian, Shenzhen, China



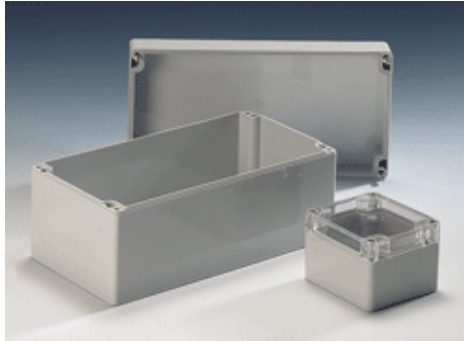


BASIC BOXES



[HOME](#) | [ABOUT US](#) | [CONTACT US](#) | [PRODUCTS](#) | [SERVICES](#) | [DOWNLOAD](#) | [TECHNICAL](#) | [NEWS](#) | [SITE MAP](#)

Polycarbonate Watertight Enclosures with Clear Lids

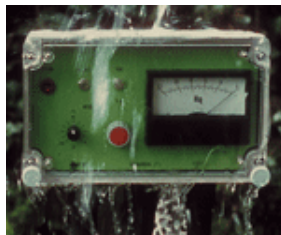


Rose+Bopla's Polycarbonate Watertight enclosures with clear lids offer design engineers an excellent, cost-effective, instrumentation box. The lid is made of clear polycarbonate which makes it ideal for viewing meters or counters that must be protected from water and dust. Polycarbonate clear lid watertight enclosures are often used as data loggers, digital odometer instruments and process control monitors. Polycarbonate offers high impact resistance and excellent chemical resistance.

The Polycarbonate Watertight enclosure includes a clear polycarbonate lid, a solid color polycarbonate base, captive stainless steel lid screws, molded-in lid screw inserts in the base, and a neoprene gasket.

TECHNICAL DATA:

- Base Color: Light Gray similar to RAL 7035 Base with a high-gloss finish
- Material: Injection molded Polycarbonate. Base is solid color. Lid is clear Lexan.
- Protection Classifications:
NEMA Types—up to Nema 4X.
IP 66, EN 60529
- Gasket Temperature Range:
Neoprene Gasket -40°F to +212°F
- Captive Lid Screws
- Surface Resistance: >10¹⁵ Ohm / VDE 0303
- Disruptive Strength: >30 KV / mm / VDE 0303
- Toxicity: Halogen Free
- Approvals: UL Listed File #E206630, UL 50, UL 508
CSA Approved
Flammability: UL 94 V2



| Polycarbonate Watertight Enclosures with Clear Lids | | | | | |
|---|---------------------|--------------------|---------------------|----------------|-----|
| Part Number | Length Inches/mm | Width Inches/mm | Height Inches/mm | Weight lbs. | CAD |
| 02205400 | 2.04/52 | 1.96/50 | 1.37/35 | .08 | |
| 02206200 | 2.55/65 | 1.96/50 | 1.37/35 | .11 | |
| 02210100 | 3.22/82 | 3.14/80 | 2.16/55 | .30 | |
| 02225100 | 3.22/82 | 3.14/80 | 3.34/85 | .38 | |
| 02215100 | 4.72/120 | 3.14/80 | 2.16/55 | .48 | |
| 02226100 | 4.72/120 | 3.14/80 | 3.34/85 | .49 | |
| 02220100 | 6.29/160 | 3.14/80 | 2.16/55 | .51 | |
| 02231100 | 6.29/160 | 3.14/80 | 3.34/85 | .61 | |
| 02217200 | 4.80/122 | 4.72/120 | 2.16/55 | .52 | |
| 02227100 | 4.80/122 | 4.72/120 | 3.54/85 | .65 | |
| 02228100 | 4.80/122 | 4.72/120 | 4.13/105 | .77 | |
| 02238100 | 6.29/160 | 4.72/120 | 3.54/90 | .87 | |
| 02246100 | 6.29/160 | 4.72/120 | 5.51/140 | 1.32 | |
| 02221100 | 7.87/200 | 4.72/120 | 2.95/75 | .87 | |
| 02237100 | 7.87/200 | 4.72/120 | 3.54/90 | 1.03 | |
| 02242100 | 9.44/240 | 4.72/120 | 3.93/100 | 1.04 | |
| 02223100 | 7.87/200 | 5.90/150 | 2.95/75 | 1.15 | |
| 02240300 | 9.44/240 | 6.29/160 | 3.54/90 | 1.43 | |
| 02243100 | 9.44/240 | 6.29/160 | 4.72/120 | 1.75 | |
| 02255100 | 14.17/360 | 7.87/200 | 5.90/150 | 3.41 | |
| 02253100 | 11.81/300 | 9.05/230 | 3.34/85 | 2.01 | |
| 02254100 | 11.81/300 | 9.05/230 | 4.33/110 | 2.54 | |

Note: Dimensions are external. Metric is the primary dimension. Inch conversions and weights are for the user's convenience and are for reference only.

We have attempted to present the information about our enclosures on this website in a straight-forward manner. We offer this information as accurate at the time of publication. Specifications are subject to change without notice. Rose+Bopla Enclosures is not responsible for inadvertent errors.

©2010 Phoenix Mecano Inc., 7330 Executive Way, Frederick, MD 21704, 301-696-9800, rbinfo@pm-usa.com