



Chipsmall Limited consists of a professional team with an average of over 10 year of expertise in the distribution of electronic components. Based in Hongkong, we have already established firm and mutual-benefit business relationships with customers from,Europe,America and south Asia,supplying obsolete and hard-to-find components to meet their specific needs.

With the principle of "Quality Parts,Customers Priority,Honest Operation,and Considerate Service",our business mainly focus on the distribution of electronic components. Line cards we deal with include Microchip,ALPS,ROHM,Xilinx,Pulse,ON,Everlight and Freescale. Main products comprise IC,Modules,Potentiometer,IC Socket,Relay,Connector.Our parts cover such applications as commercial,industrial, and automotives areas.

We are looking forward to setting up business relationship with you and hope to provide you with the best service and solution. Let us make a better world for our industry!



Contact us

Tel: +86-755-8981 8866 Fax: +86-755-8427 6832

Email & Skype: info@chipsmall.com Web: www.chipsmall.com

Address: A1208, Overseas Decoration Building, #122 Zhenhua RD., Futian, Shenzhen, China



Euromas ABS / PC



Detailed product information can be found on www.bopla.de



- 36 sizes
- 19 different M...V0 versions corresponding to UL 94 V0
- All M versions are listed under UL file no. 196 706
- Terminals and mounting on request
- Fixing screws for DIN rails or mounting panels included in scope of delivery

Colour:

Light grey, similar to RAL 7035; special colours on request

Protection class:

Depending on the model: IP 65 or IP 66/DIN EN 60529; IP 67 available on request for some sizes

Enclosure material:

ABS, PC (UV stabilised) and selected sizes in PC UL 94 V0 (additional UL 94 V0 versions on request), seal made of CR; for details see Technical Information

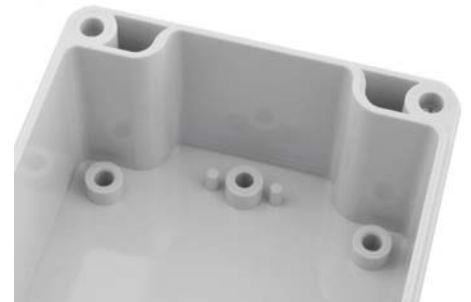
Classic enclosure made of polycarbonate or lower-cost ABS



Large processing areas and versatile mounting options for connectors, switches and keys.



Two different lids (grey or crystal-clear) allow use as displays or operating enclosures.



Circuit boards can be securely fixed in the base by means of screw domes.



The enclosure can be fitted to the wall by means of the screw channels in the base or wall brackets.



The enclosure can also be supplied on request with quick-release fastener screws.



Optional hinges allow easy opening/closing of the lid.



The factory-fitted seal can be replaced with a silicone seal, which improves temperature resistance.

Euromas | Enclosures



Enclosure, polycarbonate

Model	Order no.	A	B	C	a1	a2	b1	b2	b3	c1	c2	IP
M 205	02205000	52	50	35	46,4	30	44,4	28,2		10	31	66
M 205 G	02205400	52	50	35	46,4	30	44,4	28,2		10	31	66
M 206	02206000	65	50	35	59,4	43	44	27,7		10	29,5	66
M 206 G	02206200	65	50	35	59,4	43	44	27,7		10	29,5	66
M 208	02208000	98	64	36,4	89,4	74	55,4	32		9,2	29,4	66
M 210	02210000	82	80	55	75,3	56,6	73,3	36,5		15	49	66
M 210 G	02210100	82	80	55	75,3	56,6	73,3	36,5		15	49	66
M 215	02215000	120	80	55	113,3	94,5	73,3	36,5		15	49,5	66
M 215 G	02215100	120	80	55	113,3	94,5	73,3	36,5		15	49,5	66
M 216	02216000	120	80	60	113,3	94,5	73,3	36,5		20	54	66
M 216 G	02216100*	120	80	60	113,3	94,5	73,3	36,5		20	54	66
M 217	02217000	122	120	55	115,3	96,5	113,3	76,5		15	48	66
M 217 G	02217200	122	120	55	115,3	96,5	113,3	76,5		15	48	66
M 219	02219000	160	80	60	153,5	134,7	73,5	36,7		20	54	66
M 220	02220000	160	80	55	153,5	134,7	73,5	36,7		15	49	66
M 220 G	02220100	160	80	55	153,5	134,7	73,5	36,7		15	49	66
M 221	02221000	200	120	75	193	174,2	113	74,2		15	68,5	66
M 221 G	02221100	200	120	75	193	174,2	113	74,2		15	68,5	66
M 223	02223000	200	150	75	193	174	143	105		15	68,5	65
M 223 G	02223100	200	150	75	193	174	143	105		15	68,5	65
M 225	02225000	82	80	85	75	56	73	36		15	79	66
M 225 G	02225100	82	80	85	75	56	73	36		15	79	66
M 226	02226000	120	80	85	113	94	73	36		15	79,5	65
M 226 G	02226100	120	80	85	113	94	73	36		15	79,5	65
M 227	02227000	122	120	85	115	96,2	113	76,2		15	78	65
M 227 G	02227100	122	120	85	115	96,2	113	76,2		15	78	65
M 228	02228000	122	120	105	115	96,2	113	76,2		35	98,5	66
M 228 G	02228100	122	120	105	115	96,2	113	76,2		35	98,5	66
M 230	02230000	120	80	90	113	94	73	36		20	84	66
M 231	02231000	160	80	85	153	134	73	36		15	79	66
M 231 G	02231100	160	80	85	153	134	73	36		15	79	66
M 235	02235000	160	80	90	153	134	73	36		20	84	65
M 237	02237000	200	120	90	193	174,2	113	74,2		30	83,5	66
M 237 G	02237100	200	120	90	193	174,2	113	74,2		30	83,5	66
M 238	02238000	160	120	90	153	134,2	113	74,2		30	83,5	66
M 238 G	02238100	160	120	90	153	134,2	113	74,2		30	83,5	66
M 2381	02238200	160	120	75	153	134,2	113	74,2		15	68,5	65
M 2381 G	02238300	160	120	75	153	134,2	113	74,2		15	68,5	66
M 240	02240000	250	160	90	243	224	153	115	134	15	84	65
M 240 G	02240100	250	160	90	243	224	153	115	134	15	84	65
M 2401	02240200	240,3	160,3	90	233	214,7	153	116,7	134,7	15	84	66
M 2401 G	02240300	240,3	160,3	90	233	214,7	153	116,7	134,7	15	84	65
M 241	02241000	250	160	119	243	224	153	115	134	44	113	66
M 242	02242000	240,5	120	100,5	233,5	216,2	113	76,9		25	94	66
M 242 G	02242100	240,5	120	100,5	233,5	216,2	113	76,9		25	94	65
M 243	02243000	240,3	160,3	120	233	214,7	153	116,7	134,7	45	113,5	66
M 243 G	02243100	240,3	160,3	120	233	214,7	153	116,7	134,7	45	113,5	66
M 244	02244000	340	150	100	329,3	301,3	139,3	87,3		20	92,5	66
M 244 G	02244100	340	150	100	329,3	301,3	139,3	87,3		20	92,5	66
M 245	02245000	340	150	120	329,3	301,3	139,3	87,3		40	113	66

* = Available on request

Euromas | Enclosures

Enclosure, polycarbonate

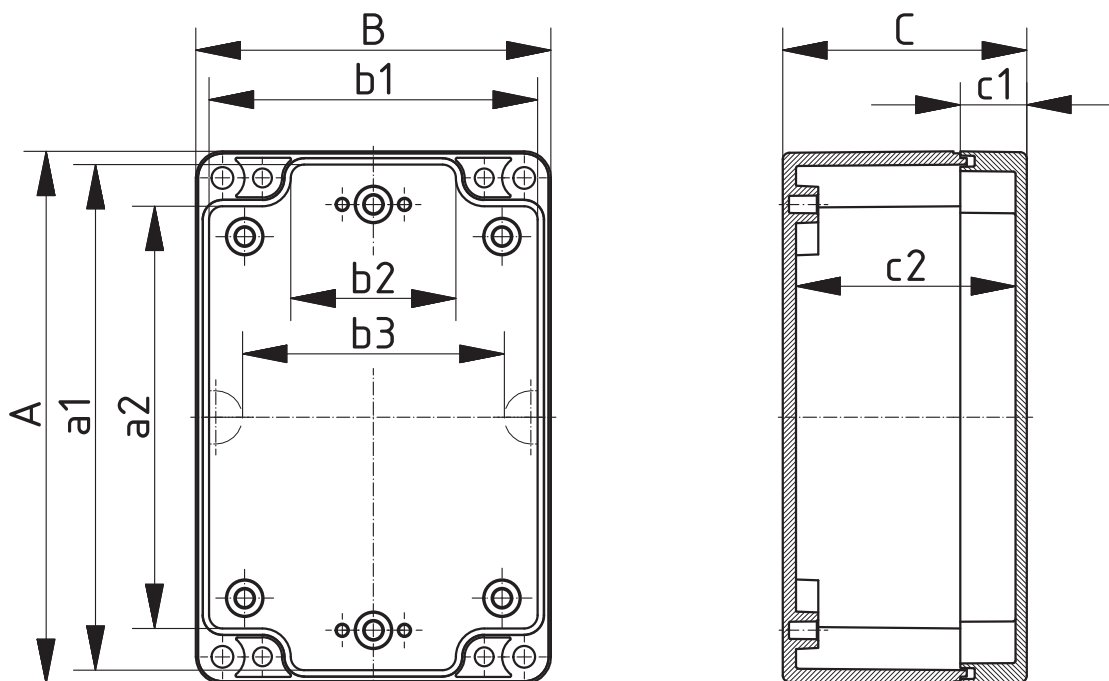
Model	Order no.	A	B	C	a1	a2	b1	b2	b3	c1	c2	IP
M 246	02246000	160	120	140	153	134,2	113	74,2		80	133,5	66
M 246 G	02246100	160	120	140	153	134,2	113	74,2		80	133,5	66
M 250	02250000	250	160	150	243	224	153	115	134	75	144	66
M 251	02251000	360	160	100	351,7	333,7	151,7	113,7	134,7	25	93,5	66
M 252	02252000	300	230	65	293,1	274,1	223,1	186,1	204,1	10	58,5	65
M 253	02253000	300	230	85	293,1	274,1	223,1	186,1	204,1	30	78,5	65
M 253 G	02253100	300	230	85	293,1	274,1	223,1	186,1	204,1	30	78,5	66
M 254	02254000	300	230	110	293,1	274,1	223,1	186,1	204,1	55	103,5	65
M 254 G	02254100	300	230	110	293,1	274,1	223,1	186,1	204,1	55	103,5	66
M 255	02255000	360	200	149,5	350,3	318,3	190,3	138,3	159,3	49,5	142	66
M 255 G	02255100	360	200	149,5	350,3	318,3	190,3	138,3	159,3	49,5	142	65



Scope of delivery: Lid and base, lid screws made of V2A, self-tapping screws for mounting bosses

Note: G = Design with crystal-clear lid.

IP = Ingress protection acc. to DIN EN 60529



Z-2503224

For accessories, please see the end of the chapter

Euromas | Enclosures



Enclosure, ABS

Model	Order no.	A	B	C	a1	a2	b1	b2	b3	c1	c2	IP
T 205	03205000	52	50	35	46,4	30	44,4	28,2		10	31	66
T 205 SV	03205400*	52	50	35	46,4	30	44,4	28,2		10	31	65
T 206	03206000	65	50	35	59,4	43	44	27,7		10	29,5	66
T 206 SV	03206400*	65	50	35	59,4	43	44	27,7		10	29,5	65
T 208	03208000	98	64	36,4	89,4	74	55,4	32		9,2	29,4	66
T 208 SV	03208400*	98	64	36,4	89,4	74	55,4	32		9,2	29,4	65
T 210	03210000	82	80	55	75,3	56,6	73,3	36,5		15	49	66
T 210 SV	03210400*	82	80	55	75,3	56,6	73,3	36,5		15	49	65
T 215	03215000	120	80	55	113,3	94,5	73,3	36,5		15	49,5	66
T 215 SV	03215400*	120	80	55	113,3	94,5	73,3	36,5		15	49,5	65
T 216	03216000	120	80	60	113,3	94,5	73,3	36,5		20	54	66
T 216 SV	03216400*	120	80	60	113,3	94,5	73,3	36,5		20	54	65
T 217	03217000	122	120	55	115,3	96,5	113,3	76,5		15	48	65
T 217 SV	03217400*	122	120	55	115,3	96,5	113,3	76,5		15	48	65
T 219	03219000	160	80	60	153,5	134,7	73,5	36,7		20	54	66
T 219 SV	03219400*	160	80	60	153,5	134,7	73,5	36,7		20	54	65
T 220	03220000	160	80	55	153,5	134,7	73,5	36,7		15	49	66
T 220 SV	03220400*	160	80	55	153,5	134,7	73,5	36,7		15	49	65
T 221	03221000	200	120	75	193	174,2	113	74,2		15	68,5	66
T 221 SV	03221400*	200	120	75	193	174,2	113	74,2		15	68,5	65
T 223	03223000	200	150	75	193	174	143	105		15	68,5	65
T 223 SV	03223400*	200	150	75	193	174	143	105		15	68,5	65
T 225	03225000	82	80	85	75	56	73	36		15	79	66
T 225 SV	03225400*	82	80	85	75	56	73	36		15	79	65
T 226	03226000	120	80	85	113	94	73	36		15	79,5	65
T 226 SV	03226400*	120	80	85	113	94	73	36		15	79,5	65
T 227	03227000	122	120	85	115	96,2	113	76,2		15	78	66
T 227 SV	03227400*	122	120	85	115	96,2	113	76,2		15	78	65
T 228	03228000	122	120	105	115	96,2	113	76,2		35	98,5	66
T 230	03230000	120	80	90	113	94	73	36		20	84	66
T 230 SV	03230400*	120	80	90	113	94	73	36		20	84	65
T 231	03231000	160	80	85	153	134	73	36		15	79	66
T 231 SV	03231400*	160	80	85	153	134	73	36		15	79	65
T 235	03235000	160	80	90	153	134	73	36		20	84	66
T 235 SV	03235400*	160	80	90	153	134	73	36		20	84	65
T 237	03237000	200	120	90	193	174,2	113	74,2		30	83,5	66
T 237 SV	03237400*	200	120	90	193	174,2	113	74,2		30	83,5	65
T 238	03238000	160	120	90	153	134,2	113	74,2		30	83,5	66
T 238 SV	03238400*	160	120	90	153	134,2	113	74,2		30	83,5	65
T 2381	03238200	160	120	75	153	134,2	113	74,2		15	68,5	66
T 240	03240000	250	160	90	243	224	153	115	134	15	84	65
T 240 SV	03240400*	250	160	90	243	224	153	115	134	15	84	65
T 2401	03240200	240,3	160,3	90	233	214,7	153	116,7	134,7	15	84	66
T 2401 SV	03240240*	240,3	160,3	90	233	214,7	153	116,7	134,7	15	84	65
T 241	03241000	250	160	119	243	224	153	115	134	44	113	66
T 241 SV	03241400*	250	160	119	243	224	153	115	134	44	113	65
T 242	03242000	240,5	120	100,5	233,5	216,2	113	76,9		25	94	66
T 242 SV	03242400*	240,5	120	100,5	233,5	216,2	113	76,9		25	94	65
T 243	03243000	240,3	160,3	120	233	214,7	153	116,7	134,7	45	113,5	66
T 243 SV	03243400*	240,3	160,3	120	233	214,7	153	116,7	134,7	45	113,5	65

* = Available on request

Euromas | Enclosures

Enclosure, ABS

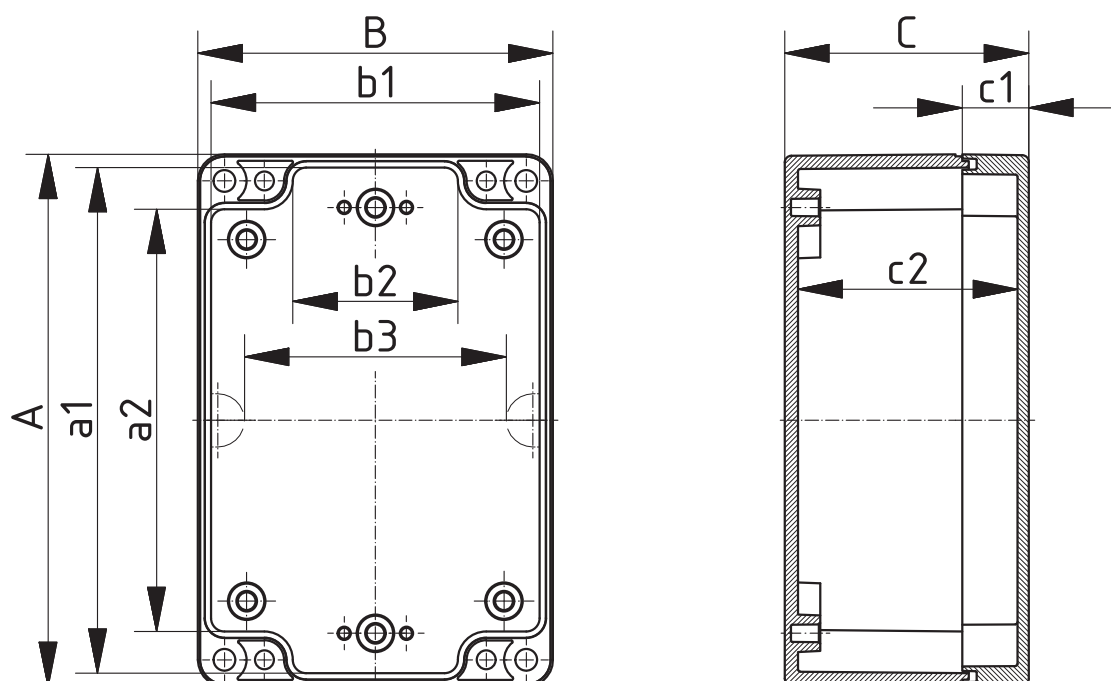
Model	Order no.	A	B	C	a1	a2	b1	b2	b3	c1	c2	IP
T 244	03244000	340	150	100	329,3	301,3	139,3	87,3		20	92,5	65
T 245	03245000	340	150	120	329,3	301,3	139,3	87,3		40	113	66
T 246	03246000	160	120	140	153	134,2	113	74,2		80	133,5	66
T 250	03250000	250	160	150	243	224	153	115	134	75	144	66
T 251	03251000	360	160	100	351,7	333,7	151,7	113,7	134,7	25	93,5	66
T 251 SV	03251400*	360	160	100	351,7	333,7	151,7	113,7	134,7	25	93,5	65
T 253	03253000	300	230	85	293,1	274,1	223,1	186,1	204,1	30	78,5	65
T 253 SV	03253400*	300	230	85	293,1	274,1	223,1	186,1	204,1	30	78,5	65
T 254	03254000	300	230	110	293,1	274,1	223,1	186,1	204,1	55	103,5	65
T 254 SV	03254400*	300	230	110	293,1	274,1	223,1	186,1	204,1	55	103,5	65
T 255	03255000	360	200	149,5	350,3	318,3	190,3	138,3	159,3	49,5	142	66
T 255 SV	03255400*	360	200	149,5	350,3	318,3	190,3	138,3	159,3	49,5	142	65
T 260	03260000	360	400	150	350,3	318,3	390,3	338,3	358,3	50	142	66



Scope of delivery: Lid and base, lid screws made of V2A, self-tapping screws for mounting bosses

Note: SV = version with quick-release fastener.

IP = Ingress protection acc. to DIN EN 60529



Z-2503224

For accessories, please see the end of the chapter

Euromas | Enclosures



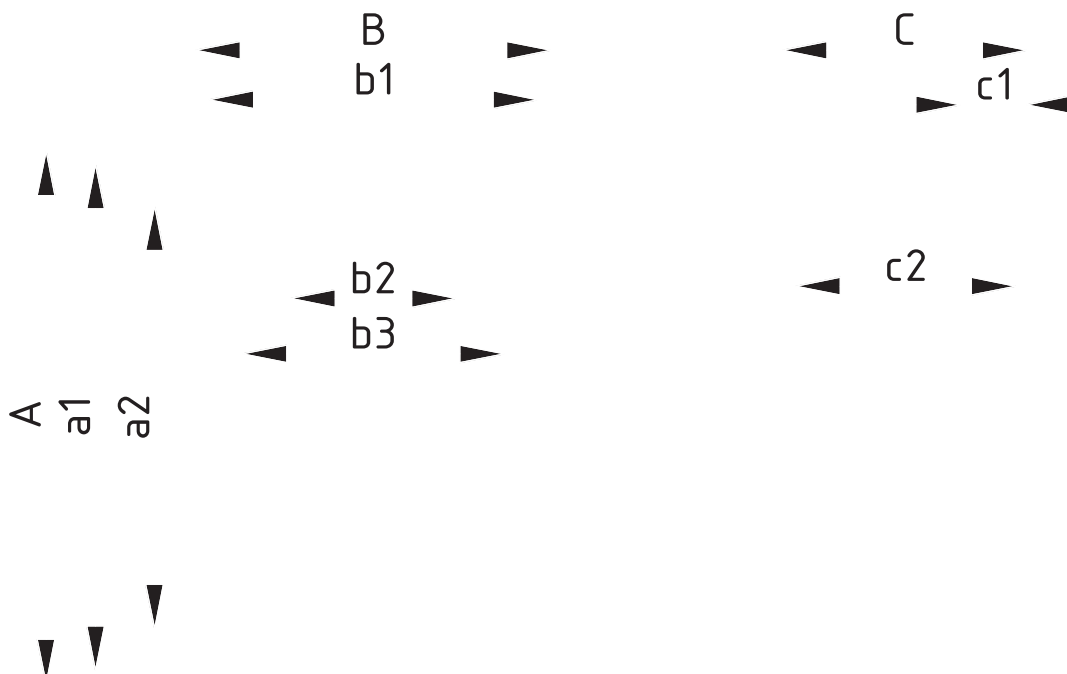
Enclosures, polycarbonate V0

Model	Order no.	A	B	C	a1	a2	b1	b2	b3	c1	c2	IP
M 205-V0	02205094	52	50	35	46,4	30	44,4	28,2		10	31	66
M 206-V0	02206094	65	50	35	59,4	43	44	27,7		10	29,5	66
M 208-V0	02208094	98	64	36,4	89,4	74	55,4	32		9,2	29,4	66
M 210-V0	02210094	82	80	55	75,3	56,6	73,3	36,5		15	49	66
M 215-V0	02215094	120	80	55	113,3	94,5	73,3	36,5		15	49,5	66
M 217-V0	02217094	122	120	55	115,3	96,5	113,3	76,5		15	48	66
M 220-V0	02220094	160	80	55	153,5	134,7	73,5	36,7		15	49	66
M 221-V0	02221094	200	120	75	193	174,2	113	74,2		15	68,5	66
M 223-V0	02223094	200	150	75	193	174	143	105		15	68,5	65
M 225-V0	02225094	82	80	85	75	56	73	36		15	79	66
M 226-V0	02226094	120	80	85	113	94	73	36		15	79,5	65
M 227-V0	02227094	122	120	85	115	96,2	113	76,2		15	78	65
M 228-V0	02228094	122	120	105	115	96,2	113	76,2		35	98,5	66
M 231-V0	02231094	160	80	85	153	134	73	36		15	79	66
M 237-V0	02237094	200	120	90	193	174,2	113	74,2		30	83,5	66
M 238-V0	02238094	160	120	90	153	134,2	113	74,2		30	83,5	66
M 2401-V0	02240294	240,3	160,3	90	233	214,7	153	116,7	134,7	15	84	66
M 242-V0	02242094	240,5	120	100,5	233,5	216,2	113	76,9		25	94	66
M 255-V0	02255094	360	200	149,5	350,3	318,3	190,3	138,3	159,3	49,5	142	66

Scope of delivery: Lid and base, lid screws made of V2A, self-tapping screws for mounting bosses

Note: V0 = version in UL 94 V0 enclosure material.

IP = Ingress protection acc. to DIN EN 60529



Euromas accessories

Mounting plates, laminated paper (Pertinax), galvanised steel for version 260

Model	Order no.	Note
M	22000100	For EM/ET 205, M/T 205
M	22000200	For EM/ET 206, M/T 206
M	22000300	For EM/ET 210, EM/ET 225, M/T 210, M/T 225
M	22000400	For EM/ET 215, M/T 215-216, M/T 226, M/T 230
M	22000500	For EM/ET 217, EM/ET 227, M/T 217, M/T 227-228
M	22000600	For EM/ET 220, EM/ET 231, M/T 219-220, M/T 231-235
M	22000700	For EM/ET 221, EM/ET 237, M/T 221, M/T 237
M	22000800	For EM/ET 223, M/T 223
M	22000900	For EM/ET 239-241, M/T 240, M/T 241, M/T 250
M	22001000	For M/T 2401, M/T 243
M	22001100	For EM/ET 238, M/T 238, M/T 246
M	22001200	For EM/ET 242, M/T 242
M	22001300	For M/T 244-245
M	22001400	For M/T 251
M	22001500	For M/T 252-254
M	22001600	For M/T 255
M	22001610	For M/T 260

Scope of delivery: 1 mounting panel



Knurled screws

Model	Order no.	Note
RD	22003100	For M/T 210-215, M/T 217, M/T 220-227, M/T 231
RD	22003200	For M/T 240-2401
RD	22003310	For M/T 241, M/T 243

Scope of delivery: 1 set, suitable for one enclosure

Note: Not for use with enclosures with a quick-release fastener.



Rubber feet, plug-in

Model	Order no.	Note
F	22003300	For M/T 208-260

Scope of delivery: 4 pieces



Silicone seal for lid

Model	Order no.	Note
SIL	22003500	For M/T 210, M/T 225
SIL	22003600	For M/T 215, M/T 226, M/T 230
SIL	22003700	For M/T 217, M/T 227-228
SIL	22003800	For M/T 219-220, M/T 231-235
SIL	22003900	For M/T 221, M/T 237
SIL	22004100	For M/T 240, M/T 241, M/T 250
SIL	22004200	For M/T 2401, M/T 243
SIL	22004300	For M/T 238, M/T 246
SIL	22004400	For M/T 242
SIL	22004500	For M/T 244-245
SIL	22004600	For M/T 251
SIL	22004700	For M/T 252-254
SIL	22004800	For M/T 255
SIL	22005500	Für M/T 223

Scope of delivery: 1 seal



Euromas accessories



Wall brackets on rear, screw-on, polycarbonate

Model	Order no.	Note
WL	22004900	For M/T 210-243, M/T 246-253

Scope of delivery: 4 pieces



DIN rails DIN EN 60715 TH 15

Model	Order no.	Note
TS 15	22001800	For M/T 205
TS 15	22001710	For M/T 206
TS 15	22001700	For M/T 210, M/T 225
TS 15	22001900	For M/T 215-217, M/T 226-230
TS 15	22002000	For M/T 219-220, M/T 231-235, M/T 238, M/T 246, P 325, M/T 2381
TS 15	22002100	For M/T 221-223, M/T 237
TS 15	22002402	For M/T 240-243, M/T 250
TS 15	22002720	For M/T 244-245
TS 15	22002820	For M/T 251
TS 15	22002920	For M/T 252-254

Scope of delivery: 1 DIN rail



DIN rails DIN EN 60715 G 32

Model	Order no.	Note
TS 32	22001701	For M/T 210, M/T 225, P 305, P 326
TS 32	22002010	For M/T 219-220, M/T 231-235, M/T 238, M/T 246, P 316, P 325, M/T 2381
TS 32	22002110	For M/T 221-223, M/T 237
TS 32	22002300	For M/T 240, M/T 241, M/T 250
TS 32	22002400	For M/T 2401, M/T 242-243
TS 32	22002700	For M/T 244-245
TS 32	22002800	For M/T 251
TS 32	22002900	For M/T 252-254
TS 32	22002950	For M/T 255
TS 32	22002960	For M/T 260

Scope of delivery: 1 DIN rail



DIN rails DIN EN 60715 TH 35

Model	Order no.	Note
TS 35	22001702	For M/T 210, M/T 225, P 305, P 326
TS 35	22001910	For M/T 215-217, M/T 226-230
TS 35	22002020	For M/T 219-220, M/T 231-235, M/T 238, M/T 246, P 316, P 325, M/T 2381
TS 35	22002115	For M/T 221-223, M/T 237
TS 35	22002310	For M/T 240, M/T 241, M/T 250
TS 35	22002401	For M/T 2401, M/T 242-243
TS 35	22002710	For M/T 244-245
TS 35	22002810	For M/T 251
TS 35	22002910	For M/T 252, 253, 254
TS 35	22002951	For M/T 255

Scope of delivery: 1 DIN rail

Euromas accessories

Threaded inserts for mounting bosses

Model	Order no.	Note
DODGE M3x6,5	59002810	ND = 4.0 x 6.5
DODGE M4x9,5	59002820	ND = 5.4 x 9.5

Scope of delivery: 1 piece

Note: Put the threaded insert into the boss until it touches the base. Then hammer down the stretcher plate using a pin.



Set of hinges

Model	Order no.
SchM	22006000

Scope of delivery: 1 set of hinges (polycarbonate)

Note: For use with a lid height of 15 mm and higher. Mechanical processing and mounting on request.

