



Chipsmall Limited consists of a professional team with an average of over 10 year of expertise in the distribution of electronic components. Based in Hongkong, we have already established firm and mutual-benefit business relationships with customers from,Europe,America and south Asia,supplying obsolete and hard-to-find components to meet their specific needs.

With the principle of "Quality Parts,Customers Priority,Honest Operation,and Considerate Service",our business mainly focus on the distribution of electronic components. Line cards we deal with include Microchip,ALPS,ROHM,Xilinx,Pulse,ON,Everlight and Freescale. Main products comprise IC,Modules,Potentiometer,IC Socket,Relay,Connector.Our parts cover such applications as commercial,industrial, and automotives areas.

We are looking forward to setting up business relationship with you and hope to provide you with the best service and solution. Let us make a better world for our industry!



## Contact us

Tel: +86-755-8981 8866 Fax: +86-755-8427 6832

Email & Skype: info@chipsmall.com Web: www.chipsmall.com

Address: A1208, Overseas Decoration Building, #122 Zhenhua RD., Futian, Shenzhen, China

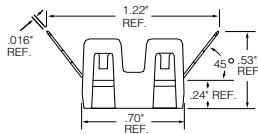
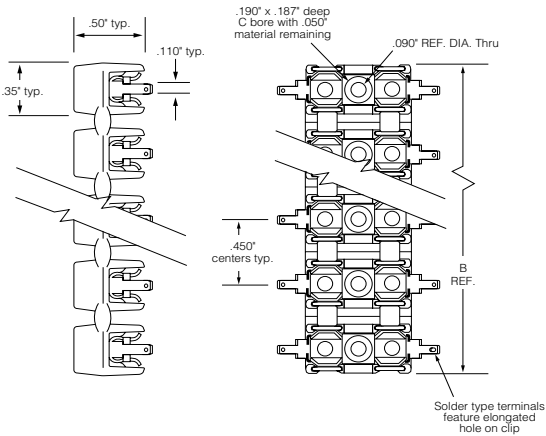


## 254 Series OMNI-BLOK® Molded Base Fuse Block for 2AG Fuses

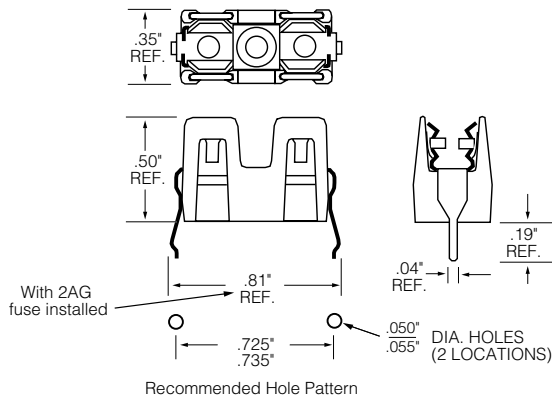


### Dimensions

### Solder & Q.C. Types:



### PC. Board Mount Type



### Product Characteristics

<b>Compatible Fuses Size</b>	<b>2AG</b>
<b>Description</b>	This low profile Omni-Blok® Fuse Block design is available with a choice of solder type terminals, Q.C. terminals or P.C. board mountable terminals. The PCB design is offered with either tin-plated brass terminals for normal applications or tin-plated beryllium copper terminals for use in caustic environments. These fuse blocks feature individual barriers which reinforce the fuse clips while providing greater protection against clip damage and electrical shock. The unique design permits self-alignment of clips to fuse cap. This, plus a one-piece clip/terminal assures low contact resistance. Multiple units may be broken apart to obtain desired number of units.
<b>Rating</b>	400 VAC/DC / 10A
<b>Dielectric Strength</b>	1500V., Minimum
<b>Clip/Terminals</b>	Tin-Plated Spring Brass, except pn 254121 is Tin-Plated Beryllium Copper
<b>Base</b>	Black Thermoplastic, glass reinforced with UL V0 flammability rating
<b>Ambient Temperature</b>	-40°C to +85°C

### Agency Approval

Agency	Agency File Number
	E14721
	7316

### OPTIONS:

1. Other colors available on special order. Contact factory.
2. Two different style clips can be supplied for circuit identity or polarization. Contact factory.

### Additional Information



Datasheet



Resources



Samples

## Ordering Information

Ordering NO.*	Catalog NO.	No. of Poles	Width (B)	Clip/Terminal Material	Packaging Available
<b>Solder Type Terminals</b>					
0254 0001Z	254 001	1	0.35"	Brass	Z
0254 0002Z	254 002	2	0.875"	Brass	Z
0254 0003Z	254 003	3	1.31"	Brass	Z
0254 0004Z	254 004	4	1.75"	Brass	Z
0254 0005Z	254 005	5	2.18"	Brass	Z
0254 0006Z	254 006	6	2.62"	Brass	Z
0254 0007Z	254 007	7	3.06"	Brass	Z
0254 0008Z	254 008	8	3.50"	Brass	Z
<b>NEMA Style .110" Q.C. Terminals</b>					
0254 0201Z	254 201	1	0.35"	Brass	Z
0254 0202Z	254 202	2	0.875"	Brass	Z
0254 0203Z	254 203	3	1.31"	Brass	Z
0254 0204Z	254 204	4	1.75"	Brass	Z
0254 0205Z	254 205	5	2.18"	Brass	Z
0254 0206Z	254 206	6	2.62"	Brass	Z
0254 0207Z	254 207	7	3.06"	Brass	Z
0254 0208Z	254 208	8	3.50"	Brass	Z
<b>PC. Board Mount</b>					
02540101Z	254 101	1	0.35"	Brass	Z
02540121Z	254 121	1	0.35"	Beryllium Copper	Z

**Add Suffix:**

"Z" =for bulk package