



Chipsmall Limited consists of a professional team with an average of over 10 year of expertise in the distribution of electronic components. Based in Hongkong, we have already established firm and mutual-benefit business relationships with customers from,Europe,America and south Asia,supplying obsolete and hard-to-find components to meet their specific needs.

With the principle of “Quality Parts,Customers Priority,Honest Operation,and Considerate Service”,our business mainly focus on the distribution of electronic components. Line cards we deal with include Microchip,ALPS,ROHM,Xilinx,Pulse,ON,Everlight and Freescale. Main products comprise IC,Modules,Potentiometer,IC Socket,Relay,Connector.Our parts cover such applications as commercial,industrial, and automotives areas.

We are looking forward to setting up business relationship with you and hope to provide you with the best service and solution. Let us make a better world for our industry!



Contact us

Tel: +86-755-8981 8866 Fax: +86-755-8427 6832

Email & Skype: info@chipsmall.com Web: www.chipsmall.com

Address: A1208, Overseas Decoration Building, #122 Zhenhua RD., Futian, Shenzhen, China



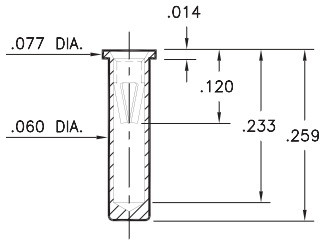
PIN RECEPTACLES

FOR .022" - .032" DIAMETER PINS

0295

0295-0-15-XX-06-XX-10-0

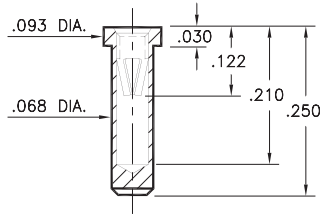
Solder mount in .063 min. mounting hole
Also available on 12mm wide carrier tape:
1,000 parts per 13" reel
Order as: 0295-0-57-XX-06-XX-10-0



0292

0292-0-15-XX-06-XX-10-0

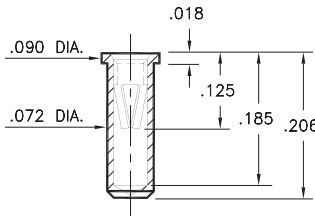
Solder mount in .071 min. mounting hole



0294

0294-0-15-XX-06-XX-10-0

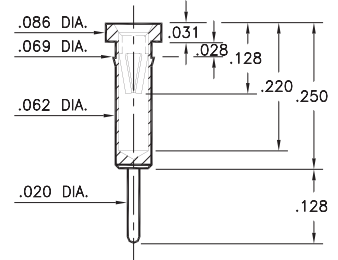
Solder mount in .076 min. mounting hole
Also available on 12mm wide carrier tape:
1,400 parts per 13" reel
Order as: 0294-0-57-XX-06-XX-10-0



0398

0398-0-15-XX-06-XX-04-0

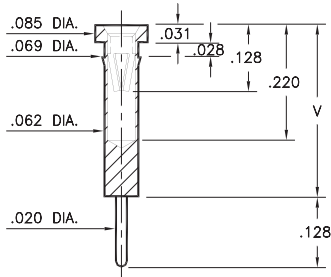
Press-fit in .066 mounting hole



0397

0397-X-15-XX-06-XX-04-0

Press-fit in .066 mounting hole

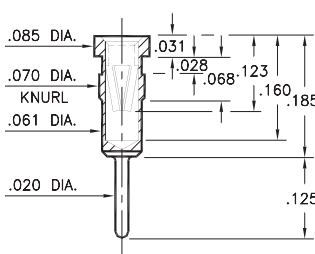


Basic Part Number	Length V
0397-0	.353
0397-1	.333
0397-2	.413

0297

0297-0-15-XX-06-XX-04-0

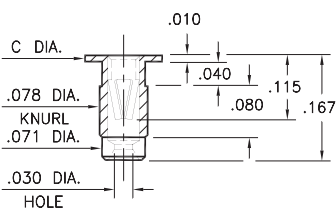
Press-fit in .067 mounting hole



9019/9039

90X9-0-19-XX-06-XX-10-0

Press-fit in .075 mounting hole



Basic Part Number	Head Dia. C
9019-0	.125
9039-0	.100

SPECIFICATIONS:

Shell Material: Brass Alloy 360, 1/2 Hard

Contact Material: Beryllium Copper Alloy 172, HT

Dimensions: Inches

Tolerances On: Lengths: ±.005

Diameters: ±.002

Angles: ± 2°



ORDER CODE: XXXX - X - XX - XX - 06 - XX - XX - 0

BASIC PART #

SPECIFY SHELL FINISH:

- 01 200 μ" TIN/LEAD OVER NICKEL
- ◆ 80 200 μ" TIN OVER NICKEL (RoHS)
- ◆ 15 10 μ" GOLD OVER NICKEL (RoHS)

SPECIFY CONTACT FINISH:

- 01 200 μ" TIN/LEAD OVER NICKEL
- ◆ 80 200 μ" TIN OVER NICKEL (RoHS)
- ◆ 27 30 μ" GOLD OVER NICKEL (RoHS)

SELECT CONTACT:

#06 CONTACT (DATA ON PAGE 255)

(For alternate contact choices, see group D on page 248)

