



Chipsmall Limited consists of a professional team with an average of over 10 year of expertise in the distribution of electronic components. Based in Hongkong, we have already established firm and mutual-benefit business relationships with customers from,Europe,America and south Asia,supplying obsolete and hard-to-find components to meet their specific needs.

With the principle of "Quality Parts,Customers Priority,Honest Operation,and Considerate Service",our business mainly focus on the distribution of electronic components. Line cards we deal with include Microchip,ALPS,ROHM,Xilinx,Pulse,ON,Everlight and Freescale. Main products comprise IC,Modules,Potentiometer,IC Socket,Relay,Connector.Our parts cover such applications as commercial,industrial, and automotives areas.

We are looking forward to setting up business relationship with you and hope to provide you with the best service and solution. Let us make a better world for our industry!



## Contact us

Tel: +86-755-8981 8866 Fax: +86-755-8427 6832

Email & Skype: info@chipsmall.com Web: www.chipsmall.com

Address: A1208, Overseas Decoration Building, #122 Zhenhua RD., Futian, Shenzhen, China



# PREO Power Line EMI Filters

A Division of Eastek International Corporation

# Series EB

Smallest Package  
Lowest Cost



UL Recognized  
CSA Certified  
VDE Approved

## Introduction

The EB series are general purpose EMI filters, which suppress high frequency conducted noise both into and out of the equipment through the power lines. The compact and low cost designs make the EB series a good choice for cleaning up noisy power lines. Available in a wide range of current ratings and termination styles.

## Minimum Insertion Loss in dB

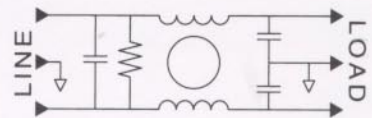
Common mode (line to ground) in 50 ohm system:

MODEL	Frequency in MHz								
	0.02	0.05	0.10	0.15	0.50	1.0	5.0	10	30
01EBM1	15	22	28	32	45	45	43	43	40
02EB11/33	7	15	21	24	35	43	45	45	40
03EB11/33/M1	4	10	15	20	30	38	48	48	44
06EB11/33/M1		2	5	9	20	28	42	50	47
10EB11/33/66		2	5	9	20	25	38	42	40
10EBM1			2	3	13	20	35	40	45
20EB11/66		3	7	10	20	28	35	38	40
30EB66		4	8	13	23	30	35	38	40

Differential mode (line to line) in 50 ohm system:

MODEL	Frequency in MHz							
	0.10	0.15	0.50	1.0	3.0	5.0	10	30
01EBM1	2	5	14	23	42	47	50	45
02EB11/33	2	5	13	16	35	45	50	45
03EB11/33/M1	2	5	12	14	24	38	44	42
06EB11/33/M1	2	5	12	14	18	33	42	42
10EB11/33/66	2	5	12	14	18	33	42	42
10EBM1	2	5	12	16	18	20	28	40
20EB11/66	2	5	12	15	18	30	40	40
30EB66	2	5	12	15	18	30	40	40

## Schematic



## Electrical ratings

Maximum operating voltage: 250 VAC

Operating frequency: 50/60 Hz

Hipot rating (one minute):

Line to Ground: 1500 VAC

Line to Line: 1450 VDC

Maximum leakage current (each line to ground):

@ 120 VAC / 60 Hz: 0.25 mA

@ 250 VAC / 50 Hz: 0.45 mA

Rated current at 40°C ambient temperature:

01EBM1 1 A

02EB11, 02EB33 2 A

03EB11, 03EB33, 03EBM1 3 A

06EB11, 06EB33, 06EBM1 6 A

10EB11, 10EB33, 10EB66, 10EBM1 10 A

20EB11, 20EB66 20 A

30EB66 30 A

Now in Stock at

## EASTEK INTERNATIONAL CORPORATION

114 Joey Drive, Elk Grove, IL 60007, USA

Phone: 847 437 2800

Fax: 847 437 2809

or your local agent