



Chipsmall Limited consists of a professional team with an average of over 10 year of expertise in the distribution of electronic components. Based in Hongkong, we have already established firm and mutual-benefit business relationships with customers from,Europe,America and south Asia,supplying obsolete and hard-to-find components to meet their specific needs.

With the principle of "Quality Parts,Customers Priority,Honest Operation,and Considerate Service",our business mainly focus on the distribution of electronic components. Line cards we deal with include Microchip,ALPS,ROHM,Xilinx,Pulse,ON,Everlight and Freescale. Main products comprise IC,Modules,Potentiometer,IC Socket,Relay,Connector.Our parts cover such applications as commercial,industrial, and automotives areas.

We are looking forward to setting up business relationship with you and hope to provide you with the best service and solution. Let us make a better world for our industry!



Contact us

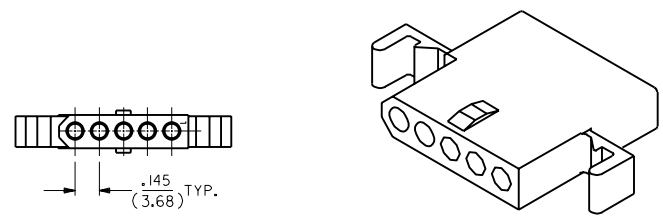
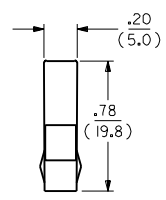
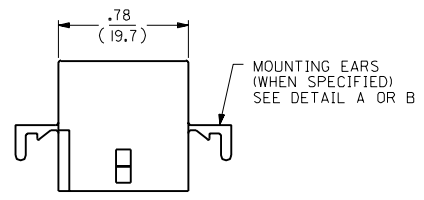
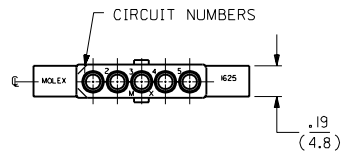
Tel: +86-755-8981 8866 Fax: +86-755-8427 6832

Email & Skype: info@chipsmall.com Web: www.chipsmall.com

Address: A1208, Overseas Decoration Building, #122 Zhenhua RD., Futian, Shenzhen, China

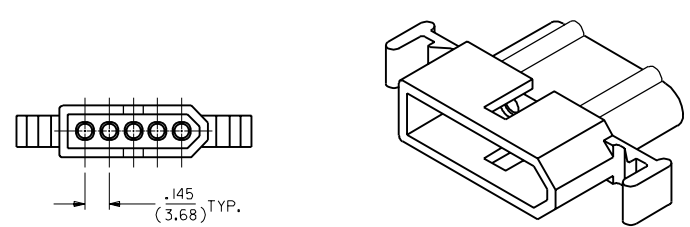
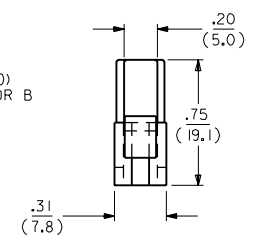
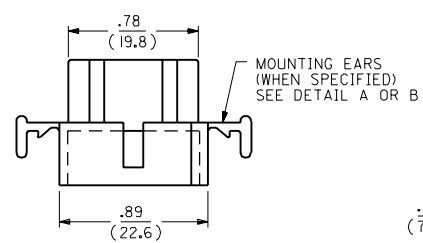
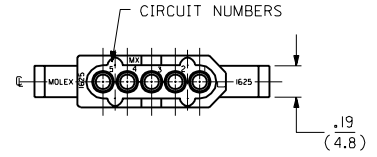


RECEPTACLE



RECEPTACLE HOUSING
SHOWN WITH STANDARD EARS

PLUG



PLUG HOUSING
SHOWN WITH STANDARD EARS

F	2	F	F	REVISED & REDRAWN
F	1	F	F	EGR * US 1881
MFG.	SH.	REV.	LTR.	KBW 01-26-89 RW
				REVISIONS

DIMENSIONS SHOWN METRIC (INCH)		TITLE	
UNLESS OTHERWISE SPECIFIED TOLERANCES: ANGULAR ± .040°		.062/(1.57) HOUSINGS PLUG & RECEPTACLE 5 CIRCUIT ± .145/(3.68)C	
3 PLACE ± .010	---	MOLEX INCORPORATED LITTLE ROCK, AR 72114 U.S.A.	SHEET NO. DATE
2 PLACE ± .014	± 0.25		1 OF 2 01/26/89
1 PLACE ---	± 0.35		
DRAFT WHERE APPLICABLE MUST REMAIN WITHIN DIMENSIONS		PART NO. DRWG. NO.	
DRWG. BY: KBW		SEE CHART SD-1625-5	
APP'D: RAS		FILE NAME: SD1625SX1	
SCALE: 2:1		THIS DRAWING CONTAINS INFORMATION THAT IS PROPRIETARY TO MOLEX INC. AND SHOULD NOT BE USED WITHOUT WRITTEN PERMISSION.	

13 12 11 10 9 8 7 6 5 4 3 2 1

PLUG		RECEPTACLE	
PART NO.	ENG. NO.	PART NO.	ENG. NO.
03-06-2054	I625-5P	03-06-1055	I625-5R
03-06-2055	I625-5P1	03-06-1056	I625-5R1
03-06-7054	I625-5PBK	03-06-6055	I625-5RBK
03-06-7055	I625-5P1BK	NOT TOOLED	I625-5R2

LEGEND:

I625-5****

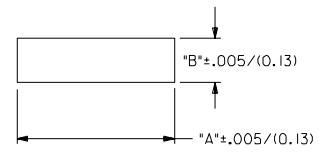
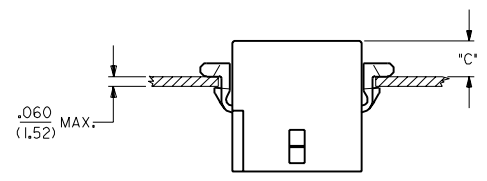
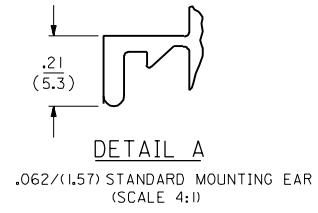
CIRCUIT SIZE

P = PLUG
R = RECEPTACLE

BLANK = WITH STANDARD EARS
1 = WITHOUT EARS
2 = WITH PREBENT EARS

COLOR:

BLANK = NATURAL COLOR
AM = AMBER BK = BLACK BU = BLUE
BN = BROWN GY = GRAY GN = GREEN
OR = ORANGE RD = RED YW = YELLOW

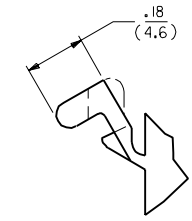
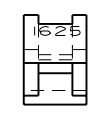


RECOMMENDED PANEL OPENING

HOUSING	DIM. "A"	DIM. "B"	"C" PREBENT EAR	"C" STANDARD EAR
PLUG	1.044/(26.52)	.318/(8.08)	.19/(4.8)	.18/(4.6)
RECEPT.	.940/(23.88)	.265/(6.73)	.21/(5.3)	.20/(5.1)

NOTES:

1. MOLEX PRODUCT SPEC 02-06 APPLIES.
2. ACCEPTS MOLEX .062 SERIES TERMINALS.
3. MATERIAL: NYLON TYPE 6/6, 94V-2.



J
I
H
G
F
E
D
C
B
A

J
I
H
G
F
D
C
B
A

13 12 11 10 9 8 7 6 5 4 3 2 1

DIMENSIONS SHOWN (METRIC) INCH		UNLESS OTHERWISE SPECIFIED TOLERANCES ANGULAR ± .004		REVISIONS		REVISIONS		DRAWING		DRAWING		DRAWING		DRAWING		
3 PLACE	± .010	---	---	F		SEE SHEET 1		DRWG. BY	KBW	CHK'D. BY	RW	FILE NAME	SD I625X2	DRWG. NO.	60532	
2 PLACE	± .01	± 0.25	---	LTR.		REVISIONS		APP'D. BY	RAS	SCALE	2:1	THIS DRAWING CONTAINS INFORMATION THAT IS PROPRIETARY TO MOLEX INC. AND SHOULD NOT BE USED WITHOUT WRITTEN PERMISSION	DATE	01/26/89	SIZE	CP C
1 PLACE	---	± 0.35	---	LTR.		REVISIONS		DRAWING		DRAWING		DRAWING		DRAWING		

TITLE		REVISIONS		REVISIONS		DRAWING		DRAWING		DRAWING		DRAWING	
.062/(1.57) HOUSINGS PLUG & RECEPTACLE 5 CIRCUIT .145/(3.68)		MOLEX INCORPORATED		SHEET NO. 2		DATE 01/26/89		PART NO. SD-I625-5		DRAWING		DRAWING	
SEE CHART		MOLEX INCORPORATED		SHEET NO. 2		DATE 01/26/89		PART NO. SD-I625-5		DRAWING		DRAWING	