



Chipsmall Limited consists of a professional team with an average of over 10 year of expertise in the distribution of electronic components. Based in Hongkong, we have already established firm and mutual-benefit business relationships with customers from,Europe,America and south Asia,supplying obsolete and hard-to-find components to meet their specific needs.

With the principle of “Quality Parts,Customers Priority,Honest Operation,and Considerate Service”,our business mainly focus on the distribution of electronic components. Line cards we deal with include Microchip,ALPS,ROHM,Xilinx,Pulse,ON,Everlight and Freescale. Main products comprise IC,Modules,Potentiometer,IC Socket,Relay,Connector.Our parts cover such applications as commercial,industrial, and automotives areas.

We are looking forward to setting up business relationship with you and hope to provide you with the best service and solution. Let us make a better world for our industry!



## Contact us

Tel: +86-755-8981 8866 Fax: +86-755-8427 6832

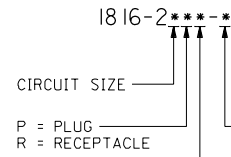
Email & Skype: info@chipsmall.com Web: www.chipsmall.com

Address: A1208, Overseas Decoration Building, #122 Zhenhua RD., Futian, Shenzhen, China



PLUG		RECEPTACLE	
ORDER NO	ENG NO	ORDER NO	ENG NO
03-09-2028	1816-2P	03-09-1028	1816-2R
03-09-7028	1816-2PBK	03-09-6028	1816-2RBK
03-09-7029	1816-2PBK-B		

**LEGEND:**

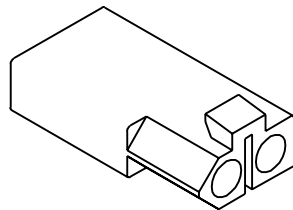
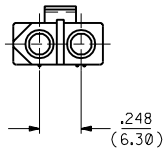
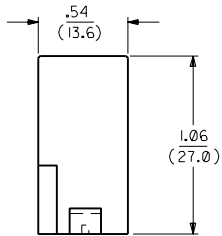
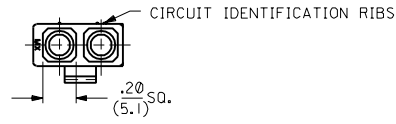


COLOR: \_\_\_\_\_  
 BLANK = NATURAL COLOR  
 AM = AMBER BK = BLACK BU = BLUE  
 BN = BROWN GY = GRAY GN = GREEN  
 OR = ORANGE RD = RED YW = YELLOW

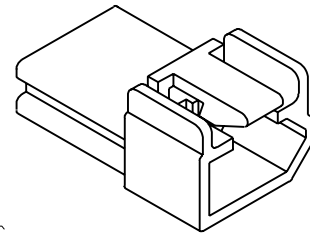
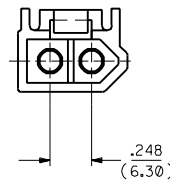
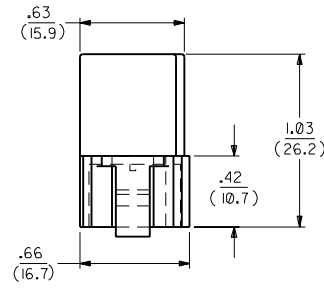
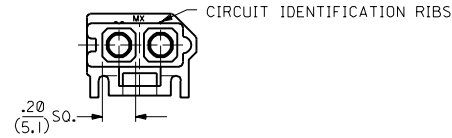
**NOTES:**

- MOLEX PRODUCT SPEC 02-09 APPLIES.
- FOR USE WITH MOLEX .093/(2.36) SERIES TERMINALS.

MATERIAL:  
 BLANK = NYLON 6/6, 94V-2, PER SMES-128-A-  
 B = NYLON 6/6, 94V-2, HEAT STABILIZED, PER SMES-128-O-1



RECEPTACLE



PLUG

C1	ADD RADII PER ECR U2 1817 GC 12/23/92	RW
C	REVISE PER ECR U2 1105 GC 7/29/92	RW
B1	REVISE PER ECR U2 0825 GC 5/28/92	RW
B	REVISED & REDRAWN ECR * U81903 RBW 9-29-88	

DIMENSIONS SHOWN METRIC (INCH)		UNLESS OTHERWISE SPECIFIED TOLERANCES: ANGULAR ± 1/2°		TITLE		REVISE ONLY ON CAD SYSTEM	
INCH	METRIC			.093/(2.36) HOUSINGS PLUG & RECEPTACLE 2 CIRCUIT, .248/(6.30)C		SHEET NO. DATE	
3 PLACE ± .010	---			MOLEX INCORPORATED		1 OF 1 09/20/88	
2 PLACE ± .014	± 0.25			L15LEJLL 60532 U.S.A.			
1 PLACE ---	± 0.35			PART NO. DRWG. NO.			
DRAFT WHERE APPLICABLE MUST REMAIN WITHIN DIMENSIONS				SEE CHART		SD-1816-2*	
DRWG. BY: KBW	CHKD. BY: RAS	FILE NAME: M18162	SCALE: 2 : 1	THIS DRAWING CONTAINS INFORMATION THAT IS PROPRIETARY TO MOLEX INC. AND SHOULD NOT BE USED WITHOUT WRITTEN PERMISSION.		DIV: CP	SIZE: C