



Chipsmall Limited consists of a professional team with an average of over 10 year of expertise in the distribution of electronic components. Based in Hongkong, we have already established firm and mutual-benefit business relationships with customers from,Europe,America and south Asia,supplying obsolete and hard-to-find components to meet their specific needs.

With the principle of “Quality Parts,Customers Priority,Honest Operation,and Considerate Service”,our business mainly focus on the distribution of electronic components. Line cards we deal with include Microchip,ALPS,ROHM,Xilinx,Pulse,ON,Everlight and Freescale. Main products comprise IC,Modules,Potentiometer,IC Socket,Relay,Connector.Our parts cover such applications as commercial,industrial, and automotives areas.

We are looking forward to setting up business relationship with you and hope to provide you with the best service and solution. Let us make a better world for our industry!



Contact us

Tel: +86-755-8981 8866 Fax: +86-755-8427 6832

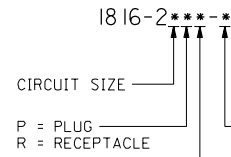
Email & Skype: info@chipsmall.com Web: www.chipsmall.com

Address: A1208, Overseas Decoration Building, #122 Zhenhua RD., Futian, Shenzhen, China



| PLUG | | RECEPTACLE | |
|------------|-------------|------------|-----------|
| ORDER NO | ENG NO | ORDER NO | ENG NO |
| 03-09-2028 | 1816-2P | 03-09-1028 | 1816-2R |
| 03-09-7028 | 1816-2PBK | 03-09-6028 | 1816-2RBK |
| 03-09-7029 | 1816-2PBK-B | | |

LEGEND:



NOTES:

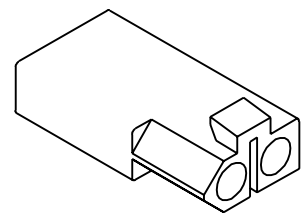
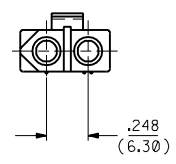
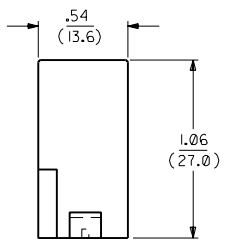
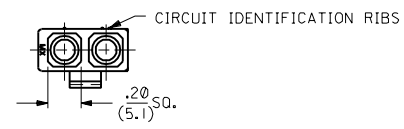
- MOLEX PRODUCT SPEC 02-09 APPLIES.
- FOR USE WITH MOLEX .093/(2.36) SERIES TERMINALS.

MATERIAL:

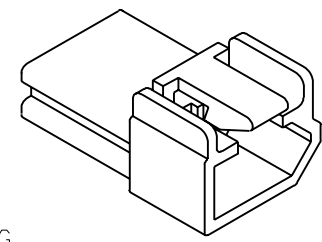
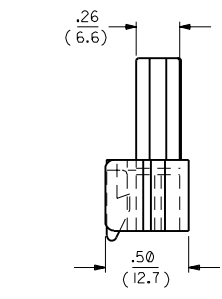
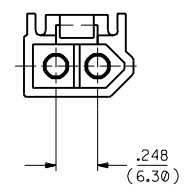
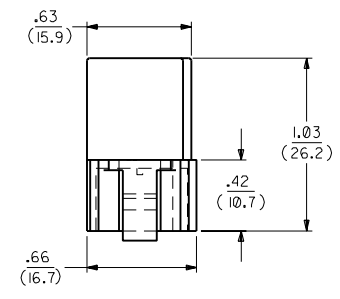
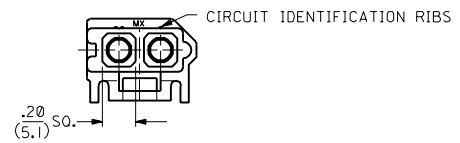
- BLANK = NYLON 6/6, 94V-2, PER SMES-128-A-*
- B = NYLON 6/6, 94V-2, HEAT STABILIZED, PER SMES-128-0-1

COLOR:

- BLANK = NATURAL COLOR
- AM = AMBER BK = BLACK BU = BLUE
- BN = BROWN GY = GRAY GN = GREEN
- OR = ORANGE RD = RED YW = YELLOW



RECEPTACLE



PLUG

| | | |
|----|--|----|
| C1 | ADD RADII PER ECR U2 1817 GC 12/23/92 | RW |
| C | REVISE PER ECR U2 1105 GC 7/29/92 | RW |
| B1 | REVISE PER ECR U2 0825 GC 5/28/92 | RW |
| B | REVISED & REDRAWN ECR * U81903 KBW 9-29-88 | |

| | | | | | |
|--|--------|---|--|----------------|--|
| DIMENSIONS SHOWN METRIC (INCH) | | UNLESS OTHERWISE SPECIFIED TOLERANCES: ANGULAR ± 1/2° | | TITLE | |
| INCH | METRIC | .093/(2.36) HOUSINGS PLUG & RECEPTACLE | | | |
| 3 PLACE ± .010 | --- | 2 CIRCUIT, .248/(6.30)C | | | |
| 2 PLACE ± .014 | ± 0.25 | MOLEX INCORPORATED | | | |
| 1 PLACE --- | ± 0.35 | L15LEJLL 60532 U.S.A. 1 OF 1 09/20/88 | | | |
| DRAFT WHERE APPLICABLE MUST REMAIN WITHIN DIMENSIONS | | PART NO. | | DRAWING NO. | |
| DRAWN BY: KBW | | FILE NAME: M18162 | | SD-1816-2* | |
| APP'D BY: RAS | | SCALE: 2 : 1 | | SHEET NO. DATE | |
| | | | | SHEET NO. DATE | |