



Chipsmall Limited consists of a professional team with an average of over 10 year of expertise in the distribution of electronic components. Based in Hongkong, we have already established firm and mutual-benefit business relationships with customers from,Europe,America and south Asia,supplying obsolete and hard-to-find components to meet their specific needs.

With the principle of “Quality Parts,Customers Priority,Honest Operation,and Considerate Service”,our business mainly focus on the distribution of electronic components. Line cards we deal with include Microchip,ALPS,ROHM,Xilinx,Pulse,ON,Everlight and Freescale. Main products comprise IC,Modules,Potentiometer,IC Socket,Relay,Connector.Our parts cover such applications as commercial,industrial, and automotives areas.

We are looking forward to setting up business relationship with you and hope to provide you with the best service and solution. Let us make a better world for our industry!



Contact us

Tel: +86-755-8981 8866 Fax: +86-755-8427 6832

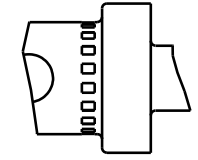
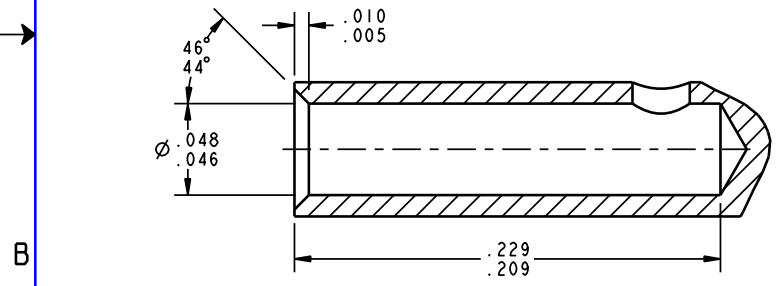
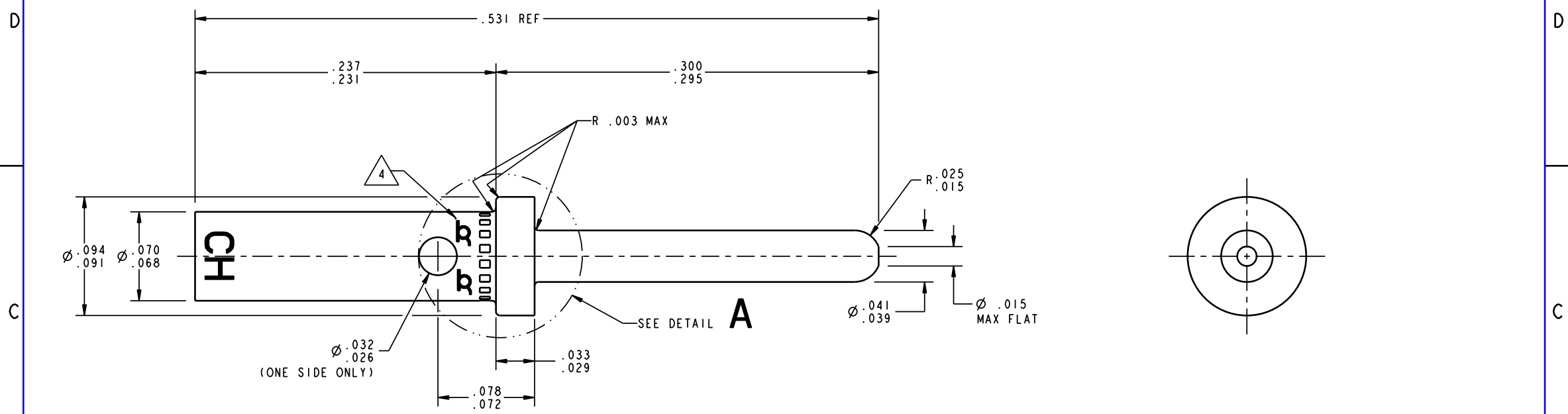
Email & Skype: info@chipsmall.com Web: www.chipsmall.com

Address: A1208, Overseas Decoration Building, #122 Zhenhua RD., Futian, Shenzhen, China



THIS IS ISSUED IN STRICT CONFIDENCE ON CONDITION THAT IT IS NOT USED AS A BASIS FOR MANUFACTURE OR SALE, AND THAT IT IS NOT COPIED, REPRINTED OR DISCLOSED TO A THIRD PARTY EITHER WHOLLY OR IN PART WITHOUT THE PRIOR WRITTEN CONSENT OF ITT CANON.

REV	DCR	DESCRIPTION	DATE	APPROVAL



ALTERNATE DETAIL "A"

NOTE: INDENTS ARE PERMITTED ON CRIMP BARREL, HOWEVER INDENTS MAY NOT EXCEED MAX CRIMP POT O.D. AND NO BURRS ARE ALLOWED.

NOTES: UNLESS OTHERWISE SPECIFIED

1. MATERIAL: CHROMEL
2. FINISH: NONE
3. ALL DIAMETERS TO BE CONCENTRIC WITH EACH OTHER WITHIN .003 T.I.R.
4. PARTS ACCEPTABLE WITH EITHER A PORTION OF OR ONE TRADEMARK ELIMINATED BY THE HOLE. PROVIDED ONE TRADEMARK IS IDENTIFIABLE.
5. CONTACT WILL ACCOMMODATE #20, #22 & #24 GAGE WIRES.
6. CRIMP CONTACT WITH AN M22520/1-01 CRIMP TOOL WITH AN M22520/1-04 LOCATOR.

RoHS COMPLIANCE CODE
 NTC - not RoHS compliant
 ROC - RoHS not hi-temp
 ROH - RoHS & hi-temp (260°C)
 NOTE - REFER TO TABLE/NOTES

ROH

ITT Cannon LLC 56 Technology Drive, IRVINE, CA 92618		WEIGHT CRITICAL DIM ∇ 0
<small>UNLESS OTHERWISE SPECIFIED: - DIMENSIONS AND TOLERANCES AS PER ASME Y14.5M-1994 - DIMENSIONS ARE IN INCHES AND FRACTIONS - REMOVE ALL BURRS AND SHARP EDGES .005 (0.13) MAX. - DO NOT SCALE DRAWING.</small>		DENSITY SPEC. DIM. ∇ 0 VOLUME REV. DIMENSIONS ∇ 0
DRAWN: Giovanni Carachure CHECKED: Steve Nguyen APPROVED: Steve Nguyen	DATE: 12/9/16 DATE: 12/13/16 DATE: 12/13/16	SURFACE AREA REF PART NO: 030-1997-027
TOL. DECIMALS .1 \pm .02 (0.51) .XX \pm .01 (0.25) .XXX \pm .005 (0.127) .XXXX \pm .0005 (0.0127)	TOL. ANGLES $^{\circ}$ \pm 1' SURFACE ROUGHNESS 63 (11.4) μ	SCALE: 7.000 DESCRIPTION: CONTACT, PIN KJ20-CHROMEL CAGE CODE: 71468
3RD ANGLE PROJECTION	SIZE: C C SHEET: 1 / 1	PART NO: 030-1997-027 REV:

DWG FILE NAME: 030-1997-027

EXPORT CODE C

This document contains technical data that is subject to export controls under the Export Administration Act and Export Administration Regulations (15 CFR 730, et seq.). Any transfer of this data to non-US persons or to any location outside the United States must be in compliance with the Export Administration Regulations.