



Chipsmall Limited consists of a professional team with an average of over 10 year of expertise in the distribution of electronic components. Based in Hongkong, we have already established firm and mutual-benefit business relationships with customers from,Europe,America and south Asia,supplying obsolete and hard-to-find components to meet their specific needs.

With the principle of “Quality Parts,Customers Priority,Honest Operation,and Considerate Service”,our business mainly focus on the distribution of electronic components. Line cards we deal with include Microchip,ALPS,ROHM,Xilinx,Pulse,ON,Everlight and Freescale. Main products comprise IC,Modules,Potentiometer,IC Socket,Relay,Connector.Our parts cover such applications as commercial,industrial, and automotives areas.

We are looking forward to setting up business relationship with you and hope to provide you with the best service and solution. Let us make a better world for our industry!



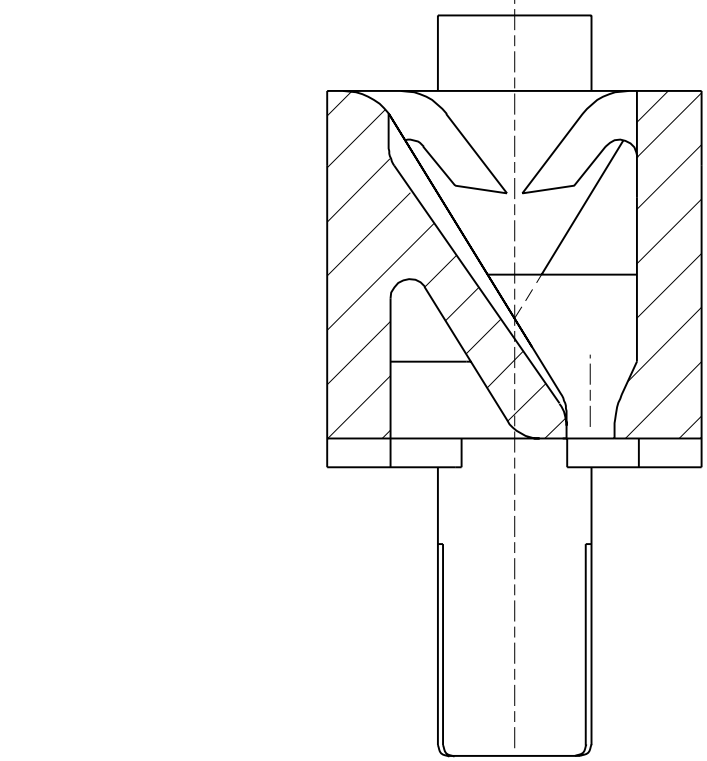
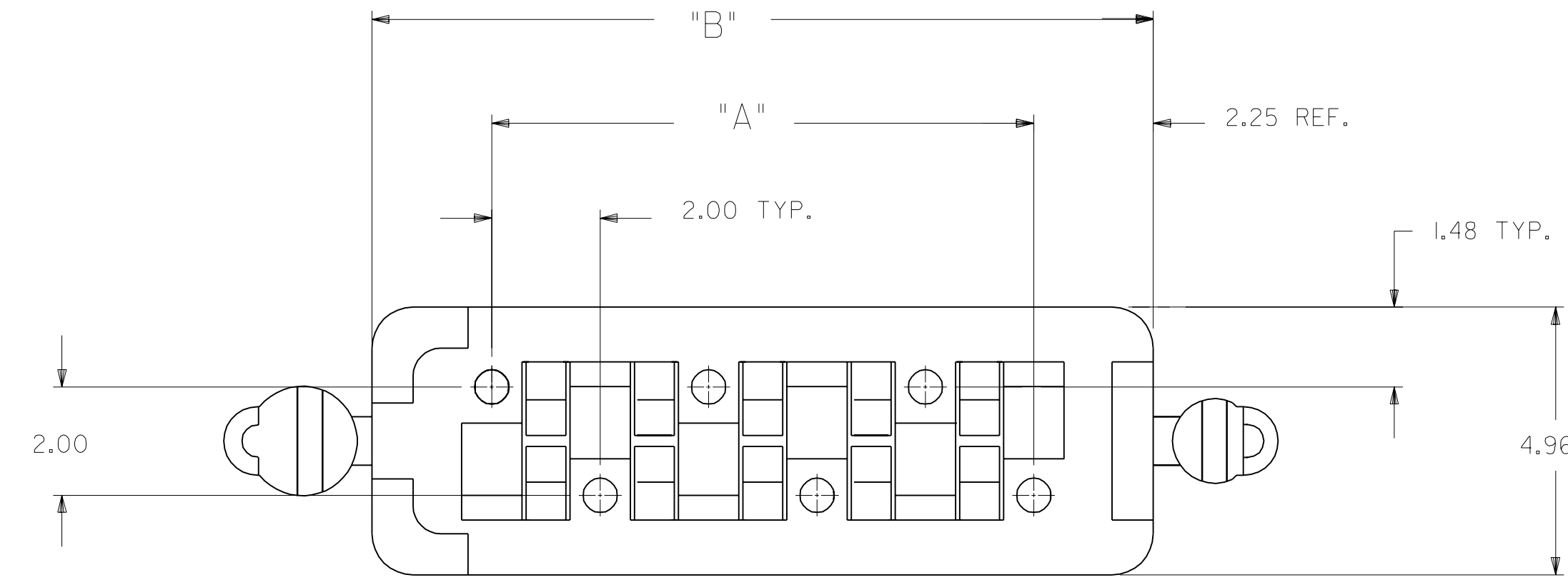
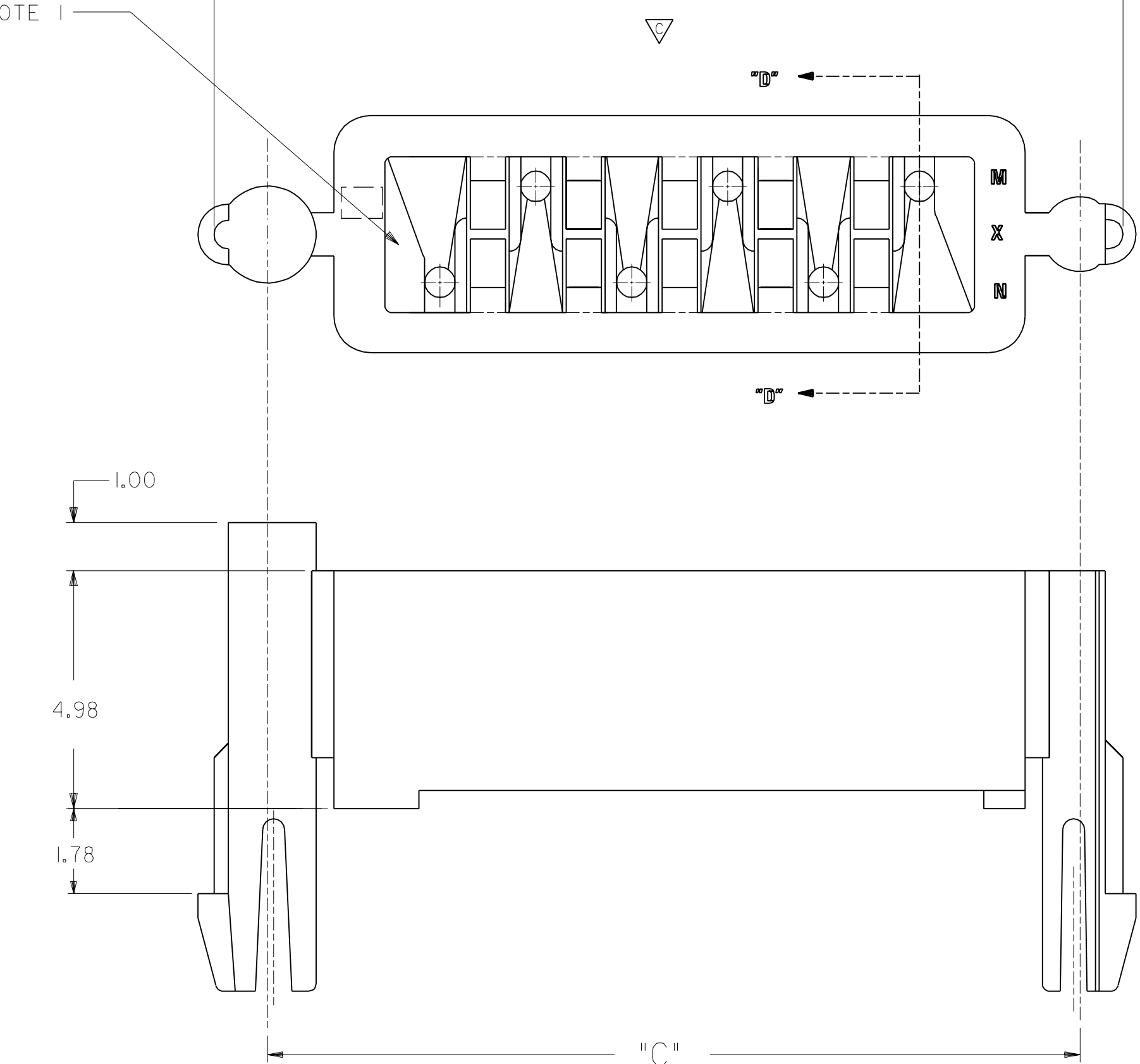
Contact us

Tel: +86-755-8981 8866 Fax: +86-755-8427 6832

Email & Skype: info@chipsmall.com Web: www.chipsmall.com

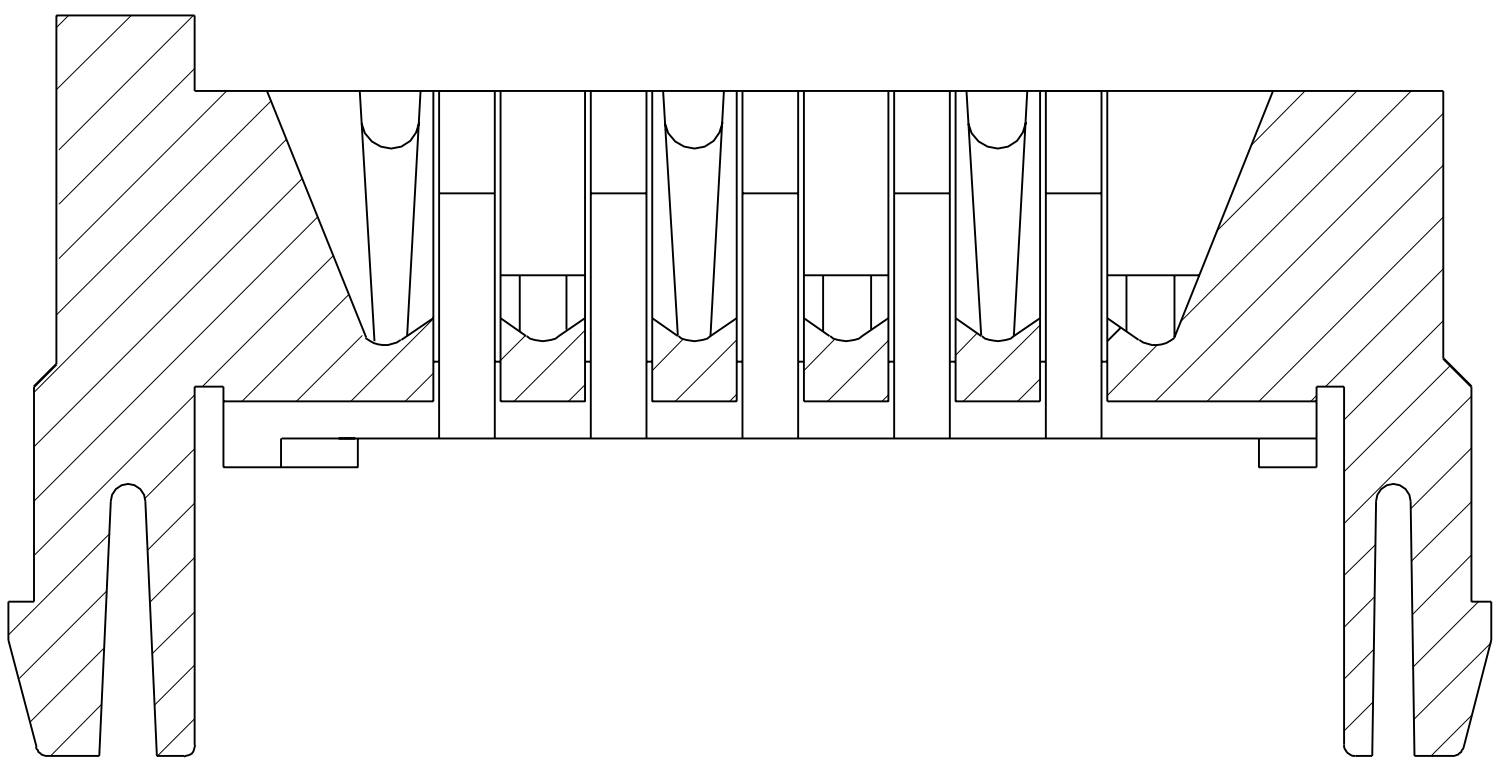
Address: A1208, Overseas Decoration Building, #122 Zhenhua RD., Futian, Shenzhen, China





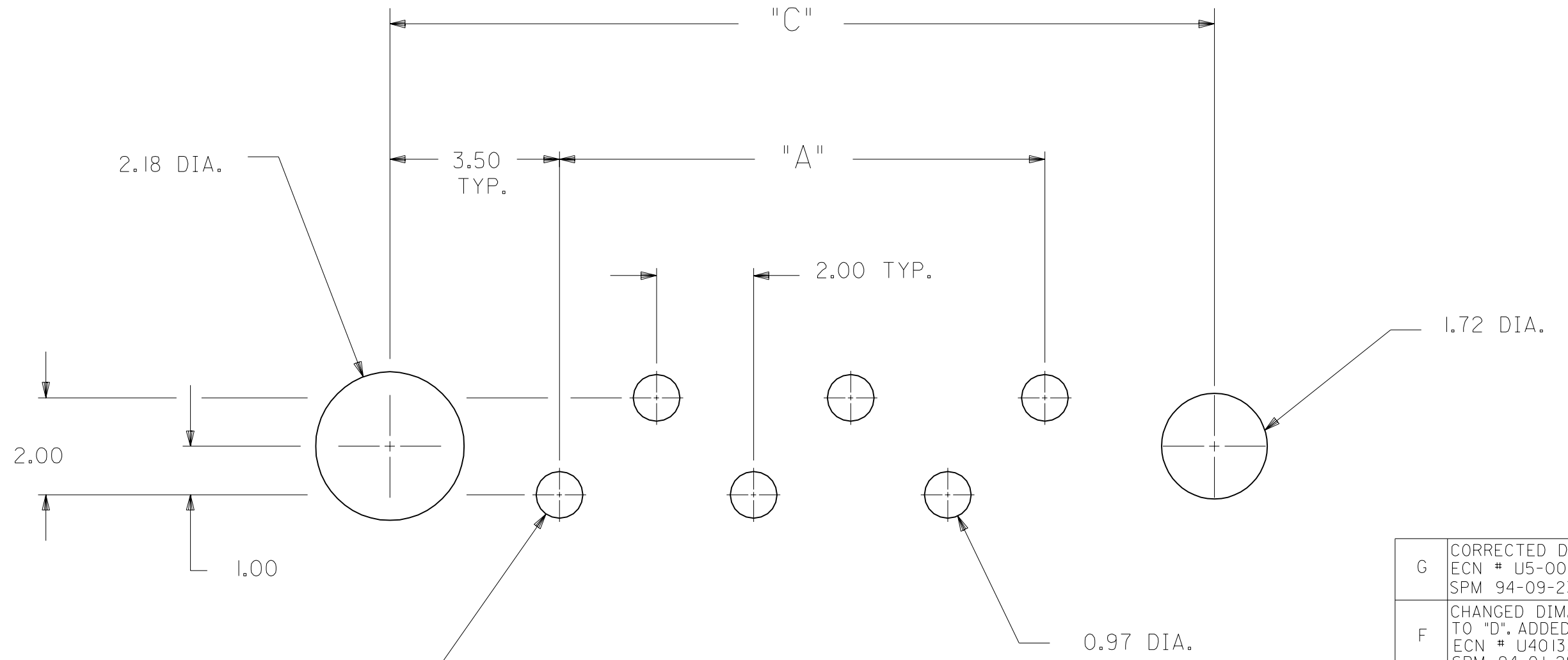
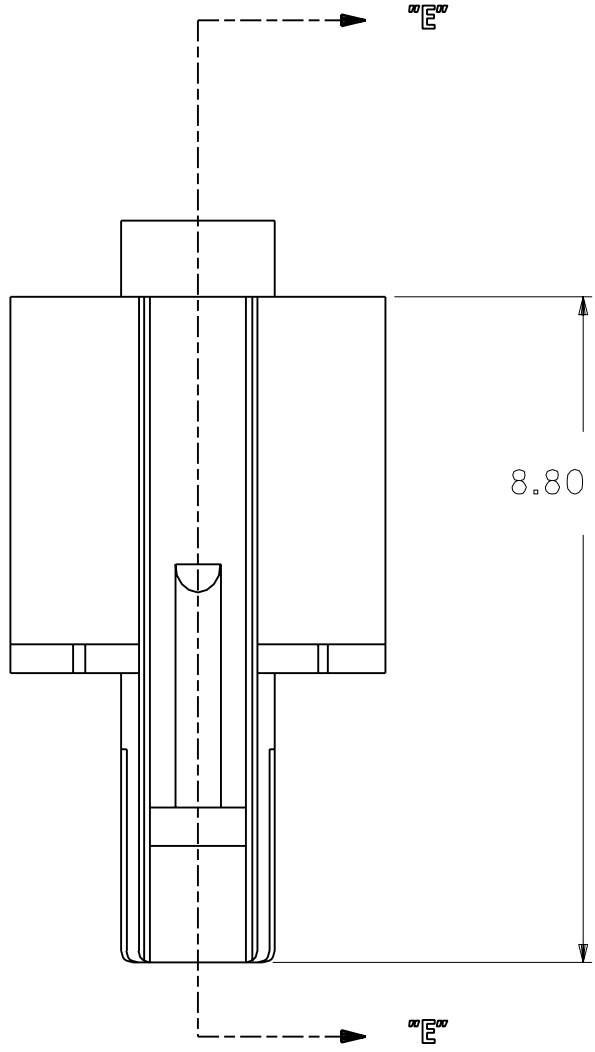
SECTION "D"-"D"

ROTATED 90°



SECTION "E"-"E"

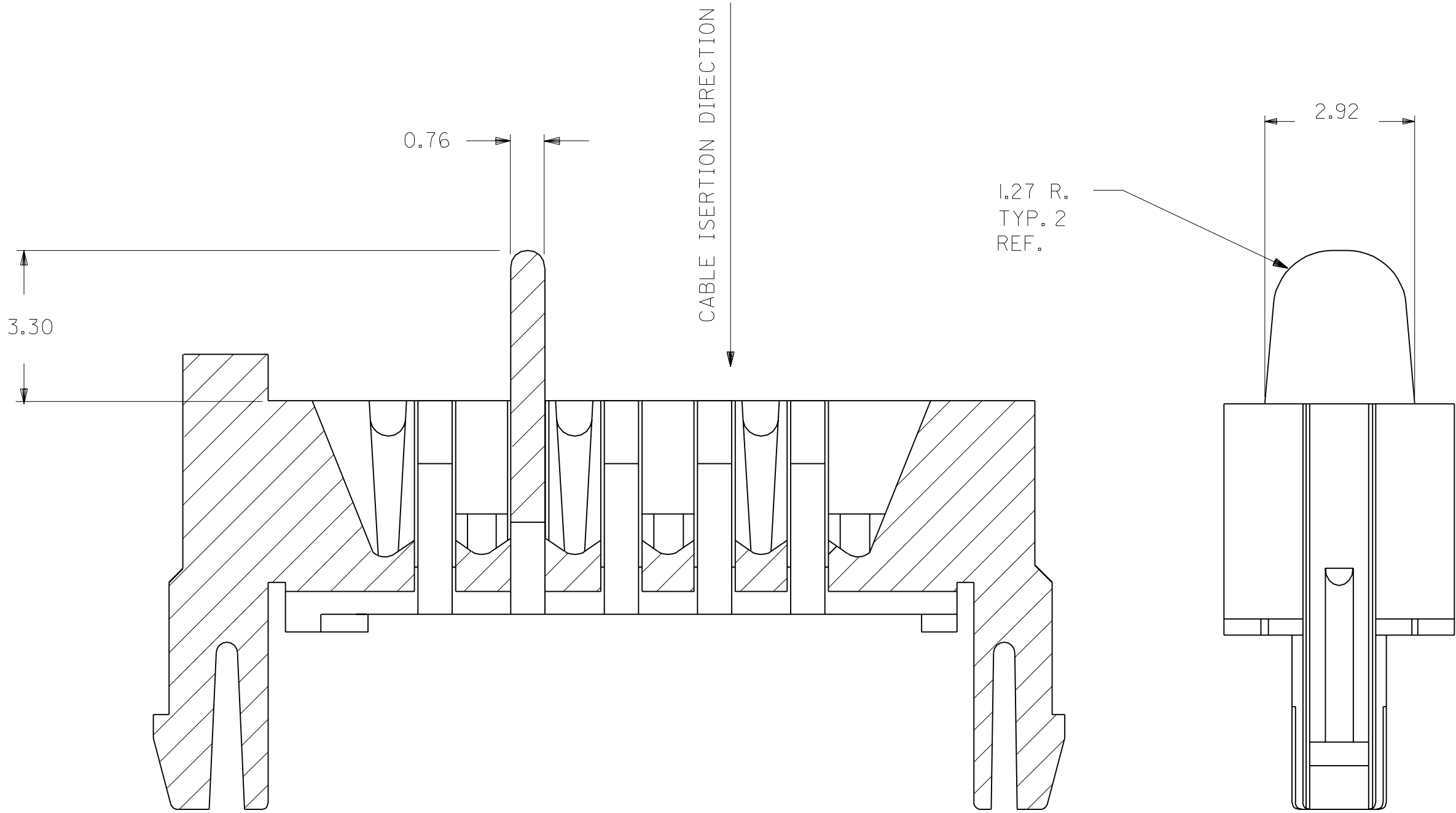
- NOTES:
1. FLASH ON HOLE PERIMETER TO BE .08 MAX.
2. THE "X" OR BLANK PRECEEDING THE ITEM NO. INDICATES IT'S NON-AVAILABILITY OR AVAILABILITY, RESPECTIVELY.
3. PRODUCT SPECIFICATION 30452-0000 APPLIES.



RECOMMENDED P.C. BOARD LAYOUT

BOARD THICKNESS 1.57

BOARD TOLERANCE ± .05



OPTIONAL POLARIZATION FEATURE

LOCATED BETWEEN CIRCUITS 2 & 3

(SEE CHART SHT. 2)

MATERIAL: POLYESTER, VALOX 457 7.5% GLASS FILLED POLYESTER OR EQUIVALENT

COLOR : WHITE

DIMENSIONS SHOWN (METRIC) INCH		MFG. SH. REV. LTR.		REVISIONS	
UNLESS OTHERWISE SPECIFIED TOLERANCES: ANGULAR = 1/2°		▽=2 ▼=0		REVISE ONLY ON CAD SYSTEM	
TITLE		CABLE HOLDER (VERTICAL) 2.00 PITCH			
INCH METRIC					
3 PLACE	---.005---				
2 PLACE	---.01---				
1 PLACE	-----.15				
DRAFT WHERE APPLICABLE MUST REMAIN WITHIN DIMENSIONS					
MOLEX INCORPORATED		SHEET NO.		DATE	
LITTLE FALLS, NJ 06952		1 OF 2		91 / 3 / 7	
PART NO.		DRAWG. NO.			
SEE CHART		SD-30453-****			
FILE NAME: S30453.DGN		THIS DRAWING CONTAINS INFORMATION THAT IS PROPRIETARY TO MOLEX INC. AND SHOULD NOT BE USED WITHOUT WRITTEN PERMISSION.			
DRWG. BY: RJG		CHKD. BY: LEG		DIV. A	
APPD. BY: SC		SCALE: 10: 1		SIZE: D	

[illegible]