



Chipsmall Limited consists of a professional team with an average of over 10 year of expertise in the distribution of electronic components. Based in Hongkong, we have already established firm and mutual-benefit business relationships with customers from,Europe,America and south Asia,supplying obsolete and hard-to-find components to meet their specific needs.

With the principle of "Quality Parts,Customers Priority,Honest Operation,and Considerate Service",our business mainly focus on the distribution of electronic components. Line cards we deal with include Microchip,ALPS,ROHM,Xilinx,Pulse,ON,Everlight and Freescale. Main products comprise IC,Modules,Potentiometer,IC Socket,Relay,Connector.Our parts cover such applications as commercial,industrial, and automotives areas.

We are looking forward to setting up business relationship with you and hope to provide you with the best service and solution. Let us make a better world for our industry!



Contact us

Tel: +86-755-8981 8866 Fax: +86-755-8427 6832

Email & Skype: info@chipsmall.com Web: www.chipsmall.com

Address: A1208, Overseas Decoration Building, #122 Zhenhua RD., Futian, Shenzhen, China

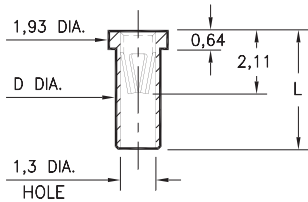


PIN RECEPTACLES

FOR 0,64 - 0,94 DIAMETER PINS AND 0,64 SQUARE PINS

0305

0305-X-15-XX-47-XX-10-0
Solder mount in 1,5/1,55 mounting hole
Also available on 8mm or 24mm wide carrier tape: See chart for details
Order as: 0305-X-57-XX-47-XX-10-0



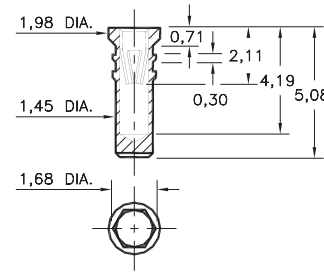
Basic Part Number	Length L	Dia. D
0305-0	2,41	1,42
0305-1	2,67	1,47
0305-2	3,94	1,47

T&R Packaging

Basic Part Number	Tape Width	Parts per 330mm Reel
0305-0	8mm	6,000
0305-1	8mm	6,000
0305-2	24mm	1,500

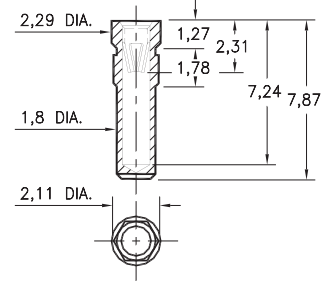
0279

0279-0-15-XX-47-XX-10-0
Hex press-fit in 1,57 plated through-hole



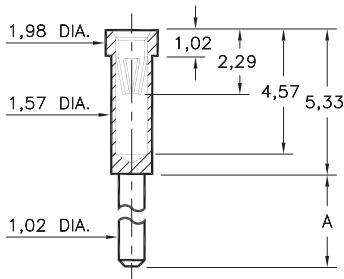
0330

0330-0-15-XX-47-XX-10-0
Hex press-fit in 2,01 plated through-hole



0300/8300

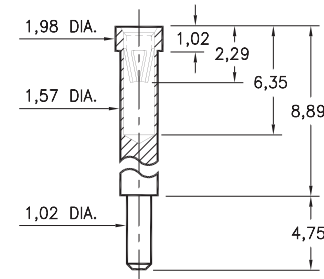
X300-X-15-XX-47-XX-10-0
Solder mount in 1,07 min. mounting hole



Basic Part Number	Length A
0300-1	2,79
0300-2	4,75
8300-0	3,56

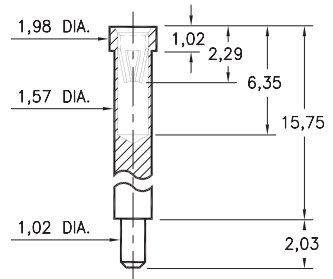
0301

0301-1-15-XX-47-XX-10-0
Solder mount in 1,07 min. mounting hole



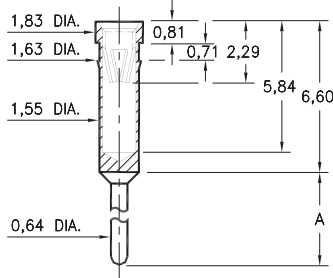
0309

0309-2-15-XX-47-XX-10-0
Solder mount in 1,07 min. mounting hole



0399

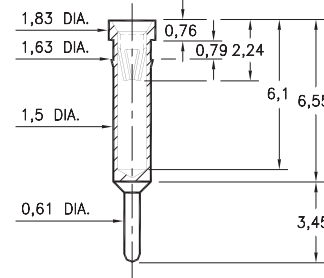
0399-X-15-XX-47-XX-04-0
Press-fit in 1,55 mounting hole



Basic Part Number	Length A
0399-0	5,84
0399-1	4,57

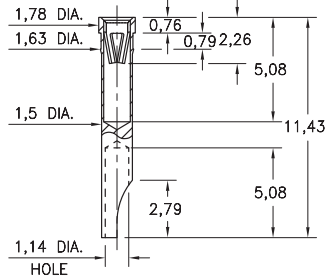
1304

1304-0-15-XX-47-XX-04-0
Press-fit in 1,55 mounting hole



1134

1134-0-18-15-47-27-10-0
Press-fit in 1,55 mounting hole



SPECIFICATIONS:

Shell Material: Brass Alloy 360, 1/2 Hard
Contact Material: Beryllium Copper Alloy 172, HT
Dimensions: Millimeters
Tolerances On: Lengths: ± 0,13
Diameters: ± 0,051
Angles: ± 2°



ORDER CODE: **XXXX - X - XX - XX - 47 - XX - XX - 0**

BASIC PART #

SPECIFY SHELL FINISH:

- 01 5,08µm TIN/LEAD OVER NICKEL
- ◆ 80 5,08µm TIN OVER NICKEL (RoHS)
- ◆ 15 0,25µm GOLD OVER NICKEL (RoHS)

SPECIFY CONTACT FINISH:

- 01 5,08µm TIN/LEAD OVER NICKEL
- ◆ 80 5,08µm TIN OVER NICKEL (RoHS)
- ◆ 27 0,76µm GOLD OVER NICKEL (RoHS)

SELECT CONTACT:

#47 CONTACT (DATA ON PAGE 256)

(For alternate contact choices, see group D on page 248)

