



Chipsmall Limited consists of a professional team with an average of over 10 year of expertise in the distribution of electronic components. Based in Hongkong, we have already established firm and mutual-benefit business relationships with customers from,Europe,America and south Asia,supplying obsolete and hard-to-find components to meet their specific needs.

With the principle of “Quality Parts,Customers Priority,Honest Operation,and Considerate Service”,our business mainly focus on the distribution of electronic components. Line cards we deal with include Microchip,ALPS,ROHM,Xilinx,Pulse,ON,Everlight and Freescale. Main products comprise IC,Modules,Potentiometer,IC Socket,Relay,Connector.Our parts cover such applications as commercial,industrial, and automotives areas.

We are looking forward to setting up business relationship with you and hope to provide you with the best service and solution. Let us make a better world for our industry!



## Contact us

Tel: +86-755-8981 8866 Fax: +86-755-8427 6832

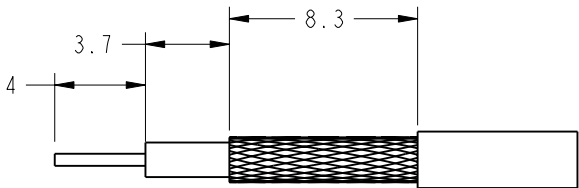
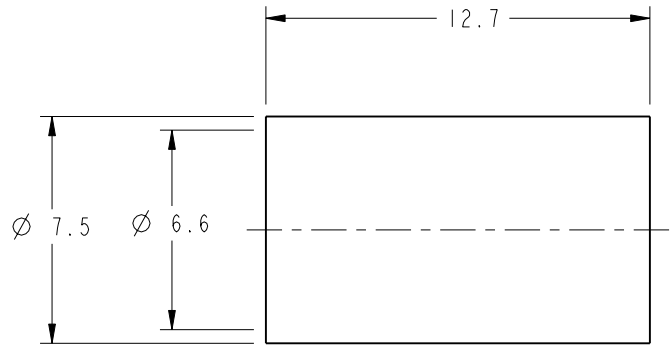
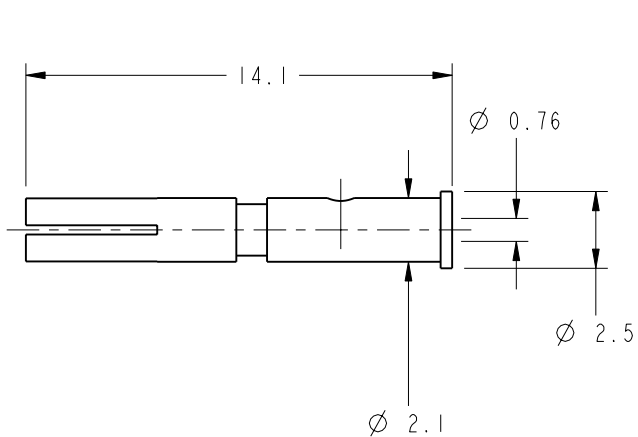
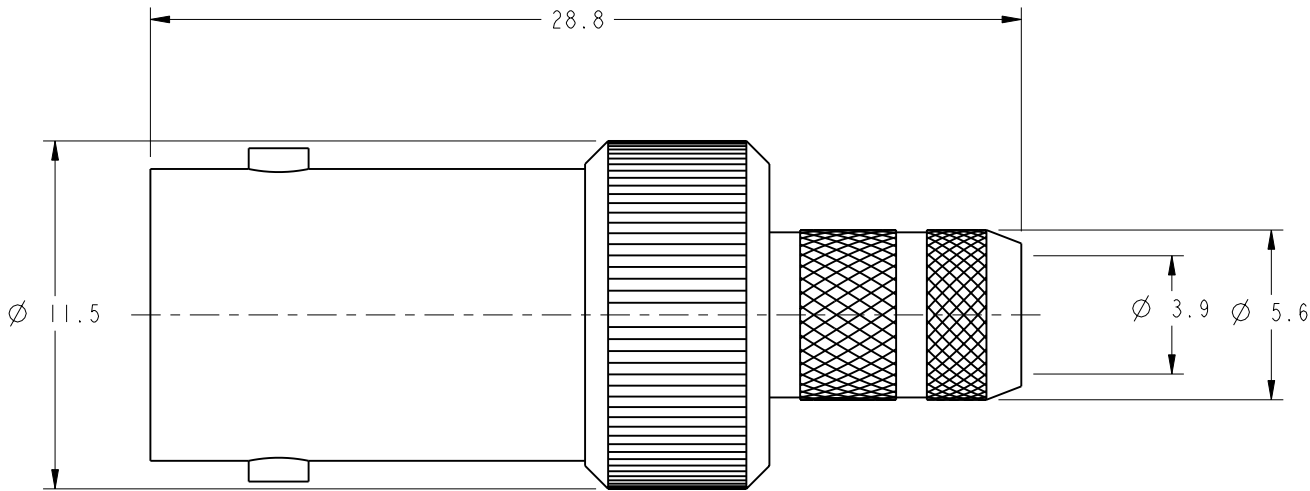
Email & Skype: [info@chipsmall.com](mailto:info@chipsmall.com) Web: [www.chipsmall.com](http://www.chipsmall.com)

Address: A1208, Overseas Decoration Building, #122 Zhenhua RD., Futian, Shenzhen, China



- NOTES:
- MATERIALS AND FINISHES:  
BODY, FERRULE & HOUSING - BRASS (ASTM-B16-H02 C36000), NICKEL PLATING (.000100 MIN THICK)  
CONTACT - PHOSPHOR BRONZE (QQ-B-750), GOLD PLATING (.000003 THICK) OVER NICKEL (.000100 MIN)  
INSULATOR - PTFE PER ASTM D 1710 OR EQUIV.
  - ELECTRICAL:  
A. IMPEDANCE: 50 OHM  
B. FREQUENCY RANGE: DC - 1 GHz  
C. DIELECTRIC WITHSTANDING VOLTAGE: 1,500 VRMS, MIN.
  - MECHANICAL:  
A. TEMPERATURE RANGE: -65° C TO +165° C
  - PACKAGING:  
A. QUANTITY: SINGLE PACK  
B. MARKING: BAG TO BE MARKED  
"AMPHENOL, 31-328-RFX, AND DATE CODE"
  - ASSEMBLY:  
A) TRIM CABLE AS SHOWN.  
B) SOLDER CENTER CONTACT  
C) CRIMP OUTER FERRULE USING .255" HEX DIE

31-328-RFX		REVISIONS			
DRAWING NO.	REV	DESCRIPTION	DATE	ECO	APPR
THIRD ANGLE PROJ. 	A	RELEASE TO MFG.	11/4/05	45764	CPM



SCALE 3.000

**CUSTOMER OUTLINE DRAWING**  
ALL OTHER SHEETS ARE FOR INTERNAL USE ONLY

UNLESS OTHERWISE SPECIFIED, DIMENSIONS ARE IN MM (INCHES) AND TOLERANCES ARE: 0.5 - 6mm ±0.2mm 6 - 30mm ±0.4mm 30 - 120mm ± 0.6mm	MATERIAL	DRAWN	DATE	TITLE				Amphenol Amphenol Corporation Communication and Network Products Division Danbury, CT U.S.A. 06810				
		C. McGRATH	04-Oct-05									
	REFERENCE	ENGINEER	DATE	BNC CRIMP JACK RG- 59 CABLE								
		O. BARTHELMES	04-Oct-05									
NOTICE - These drawings, specifications, or other data (1) are, and remain the property of Amphenol Corp. (2) must be returned upon request; and (3) are confidential and not to be disclosed to any person other than those to whom they are given by Amphenol Corp. The furnishing of these drawings, specifications, or other data by Amphenol Corp., or to any other person to anyone for any purpose is not to be regarded by implication or otherwise in any manner licensing, granting rights or permitting such holder or any other person to manufacture, use or sell any product, process or design, patented or otherwise, that may in any way be related to or disclosed by said drawings, specifications, or other data.		APPROVED	DATE					SCALE: 4.0:1		SHEET 2 OF 2		
			O. BARTHELMES	11/4/05								
		CAD FILE				CODE ID	DWG SIZE	DRAWING NO.				REV
		I:\BNC\31-328-RFX				74868	B	31-328-RFX				A