



Chipsmall Limited consists of a professional team with an average of over 10 year of expertise in the distribution of electronic components. Based in Hongkong, we have already established firm and mutual-benefit business relationships with customers from,Europe,America and south Asia,supplying obsolete and hard-to-find components to meet their specific needs.

With the principle of “Quality Parts,Customers Priority,Honest Operation,and Considerate Service”,our business mainly focus on the distribution of electronic components. Line cards we deal with include Microchip,ALPS,ROHM,Xilinx,Pulse,ON,Everlight and Freescale. Main products comprise IC,Modules,Potentiometer,IC Socket,Relay,Connector.Our parts cover such applications as commercial,industrial, and automotives areas.

We are looking forward to setting up business relationship with you and hope to provide you with the best service and solution. Let us make a better world for our industry!



Contact us

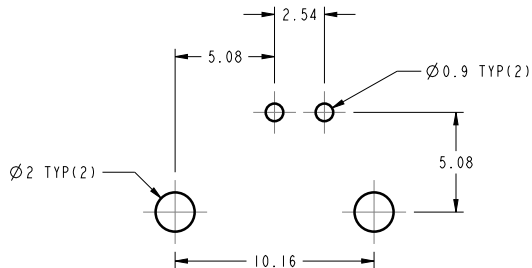
Tel: +86-755-8981 8866 Fax: +86-755-8427 6832

Email & Skype: info@chipsmall.com Web: www.chipsmall.com

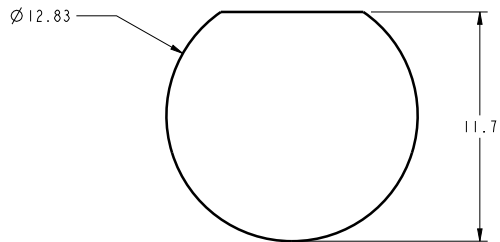
Address: A1208, Overseas Decoration Building, #122 Zhenhua RD., Futian, Shenzhen, China



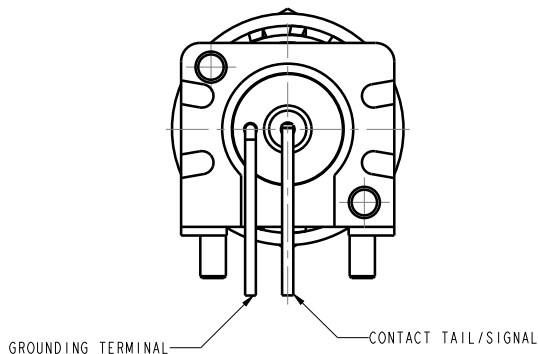
- NOTES:
- MATERIALS AND FINISHES:
BODY - PBT 15% G.F. WHITE
CONTACT -PHOPHOR BRONZE, GOLD PLATING (.000003 THICK)
@CONTACT AREA ONLY, TIN PLATING AT TAIL, NICKEL PLATED OVERALL
INSULATOR - POLYPROPYLENE
HOUSING- PBT, WHITE, 15% G.F.
GROUNDING TERMINAL-STEEL, TIN PLATING
ROUND PIN-BRASS, TIN PLATING
 - ELECTRICAL:
A. IMPEDANCE: 50 OHM
B. FREQUENCY RANGE: DC - 1GHz
C. DIELECTRIC WITHSTANDING VOLTAGE: 1500 VRMS, MIN.
 - MECHANICAL:
A. DURABILITY: 500 CYCLES MIN.
B. TEMPERATURE RANGE: -55° C TO 85° C
 - PACKAGING:
A. PACKAGED IN PACKING TRAY
B. QUANTITY PER TRAY: 40



RECOMMENDED PCB LAYOUT

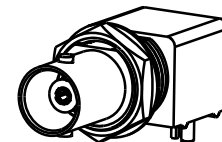


RECOMMENDED PANEL CUTOUT

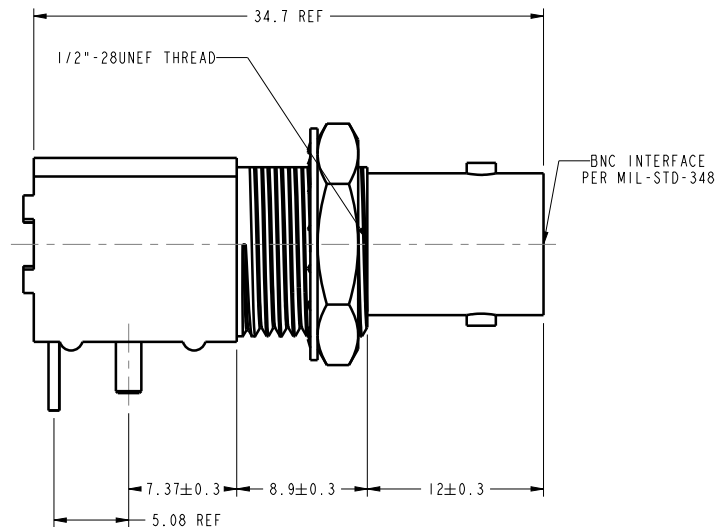


THIRD ANGLE PROJ.

REVISIONS				
REV	DESCRIPTION	DATE	ECO	APPR
A	RELEASE TO MFG	3/15/90	37099	DR
H	SEE SHEET 1	11/27/96	41683	CPM
J	SEE SHEET 1	5/9/01	43738	CPM
K	SEE SHEET 1	2/3/05	45257	CPM
L	UPDATED FORMAT AND NOMINAL ENVELOPE DIMENSIONS	10/2/12	49195	EW
M	NOTE 1 WAS BODY - ZINC DIE CAST, NICKEL PLATING	1/17/13	49397	EW
N	UPDATE PCB LAYOUT	9/8/16	01845	KCE



SCALE 1.500



CUSTOMER OUTLINE DRAWING
ALL OTHER SHEETS ARE FOR INTERNAL USE ONLY

UNLESS OTHERWISE SPECIFIED, DIMENSIONS ARE IN METRIC AND TOLERANCES ARE:
<0.5mm ±0.05mm 0.5 - 6mm ±0.1mm 6 - 30mm ±0.2mm 30 - 120mm ±0.3mm ANGLES ±1°

NOTICE - These drawings, specifications, or other data (1) are, and remain the property of Amphenol corp. (2) must be returned upon request; and (3) are confidential and not to be disclosed to any person other than those to whom they are given by Amphenol Corp. the furnishing of these drawings, specifications, or other data by Amphenol Corp., or to any other person to anyone for any purpose is not to be regarded by implication or otherwise in any manner licensing, granting rights to permitting such holder or any other sperson to manufacture, use or sell any product, process or design, patented or otherwise, that may in any way be related to or disclosed by said drawings, specifications, or other data.

MATERIAL SEE NOTES REFERENCE EAR 71004-5 FINISH	DRAWN T. ALBERA	DATE 4/5/91	TITLE BNC JACK, 50 OHM LOW-PROFILE ISOLATED PCB RECEPTACLE, WHITE RIGHT ANGLE MOUNT SCALE: 3.0:1.0 SHEET 2 OF 2 DWG SIZE B	REV N	Amphenol RF www.amphenolrf.com DRAWING NO. 031-5486 ITEM NO. 031-5486 PART NO. 031-5486
	ENGINEER D. ROYCE	DATE 4/8/91			
	APPROVED D. ROYCE	DATE 4/8/91			
	CAD FILE				