



Chipsmall Limited consists of a professional team with an average of over 10 year of expertise in the distribution of electronic components. Based in Hongkong, we have already established firm and mutual-benefit business relationships with customers from,Europe,America and south Asia,supplying obsolete and hard-to-find components to meet their specific needs.

With the principle of "Quality Parts,Customers Priority,Honest Operation,and Considerate Service",our business mainly focus on the distribution of electronic components. Line cards we deal with include Microchip,ALPS,ROHM,Xilinx,Pulse,ON,Everlight and Freescale. Main products comprise IC,Modules,Potentiometer,IC Socket,Relay,Connector.Our parts cover such applications as commercial,industrial, and automotives areas.

We are looking forward to setting up business relationship with you and hope to provide you with the best service and solution. Let us make a better world for our industry!



## Contact us

Tel: +86-755-8981 8866 Fax: +86-755-8427 6832

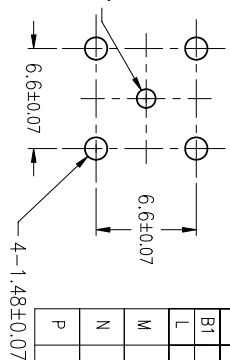
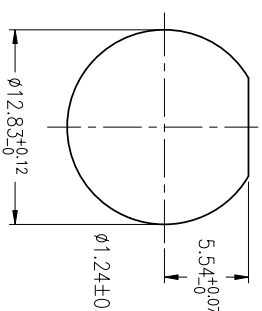
Email & Skype: [info@chipsmall.com](mailto:info@chipsmall.com) Web: [www.chipsmall.com](http://www.chipsmall.com)

Address: A1208, Overseas Decoration Building, #122 Zhenhua RD., Futian, Shenzhen, China

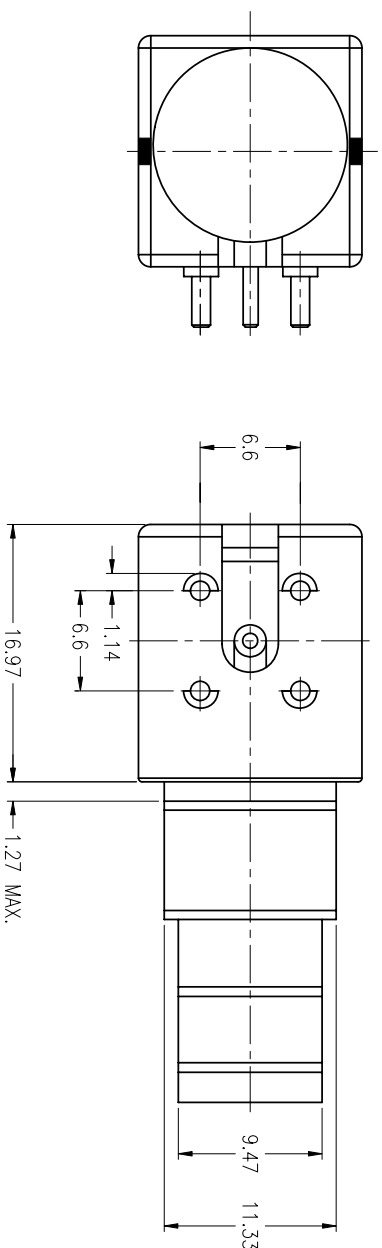
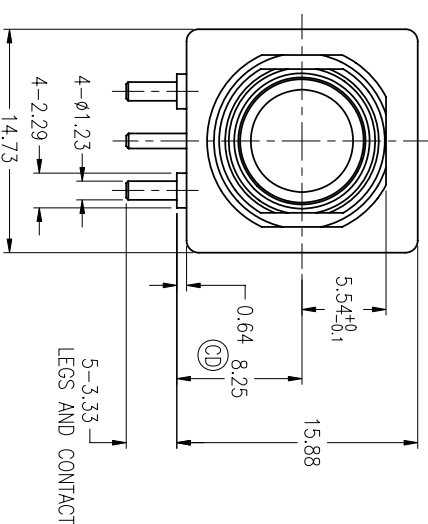
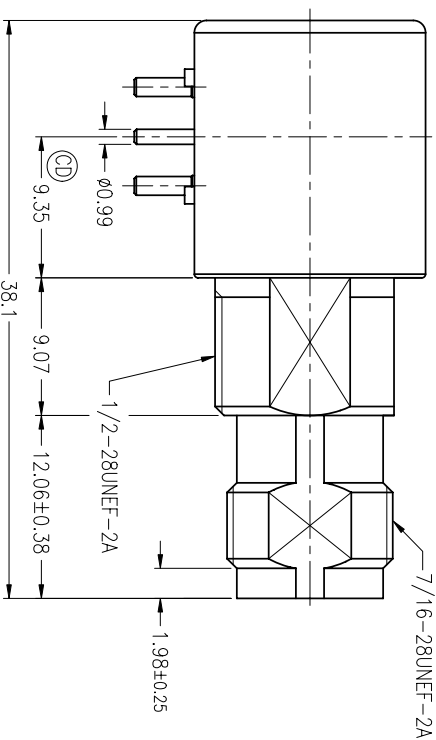


NOTES:

1. MATERIALS AND FINISHES(PLATING THICKNESS IN MICRO-INCHES):  
BODY – ZINC DIECAST, NICKEL PLATING  
CONTACT-FEMALE – BECU, GOLD PLATING  
CONTACT-MALE – BRASS, PURE MATTE TIN  
INSULATOR – PTFE  
INSULATOR – PBT
2. ELECTRICAL:  
A. IMPEDANCE: 50 OHM  
B. FREQUENCY RANGE: DC 0-11 GHz  
C. DIELECTRIC WITHSTANDING VOLTAGE: 1500 VRMS, MIN.
3. MECHANICAL:  
A. DURABILITY: 500 CYCLES MIN.  
4. MAX. PCB PANEL THICKNESS=2.54mm  
5. OPERATING TEMP. RANGES –40 TO +85 DEG CENTIGRADE.  
6. BULKPACK 500 CONNECTORS IN "ANTI-STATIC" TRAY (50 PER TRAY)  
PACKAGE 10 TRAYS IN CORRUGATED SHIPPING CARTON.
7. **Ⓢ** INDICATES CRITICAL DIMENSIONS.
8. DO NOT SCALE THIS DRAWING.
9. UNLESS OTHERWISE SPECIFIED, ALL DIMENSIONS ARE AFTER PLATING



PCB MOUNTING HOLE

RECOMMENDED  
MOUNTING HOLE

UNLESS OTHERWISE SPECIFIED, DIMENSIONS ARE IN METRIC AND TOLERANCES ARE:

0.5 – 6mm ±0.1mm	6 – 30mm ±0.2mm	30 – 120mm ± 0.3mm
---------------------	--------------------	-----------------------

NOTICE – The drawings, specifications, or other data (1) are, and remain the property of Amphenol Corp. (2) must be returned upon request; and (3) are confidential and not to be disclosed to any person other than those to whom they are given by Amphenol Corp. The turning of these drawings, specifications, or other data by Amphenol Corp., or to any other person to employ for any purpose is prohibited. The drawings, specifications, or other data may be used, copied, or reproduced by the holder or any other person to manufacture, use, or sell any product, process or design, patented or otherwise, that may in any way be related to or disclosed by said drawings, specifications, or other data.

REVISIONS				
REV	DESCRIPTION	DATE	ECO	APPR
B	SEE SHEET 1	20-Jul-05	--	--
	SEE SHEET 1	24-Aug-06	--	--
B1	SEE SHEET 1	22-Jan-07	--	A.WU
L	SEE SHEET 1	05-Aug-08	--	SH
M	UPDATE NOTE 1 INSULATOR MATERIAL SPEC ADD NOTE 5, 6, 7, 8 & 9. \RD-DM13062701S2	18-Jul-13	49621	HARRY
N	REMOVED 2-ø1.4±0.07-4-ø1.48±0.07 WAS 2-ø1.97±0.09, ADD ø1.24±0.07.	11-Oct-13	49755	KC
P	CONTACT-MALE MATERIAL CHANGE:BRASS WAS ZINC DICCAST\RD-DM13102301J8	30-Oct-13	49776	KC

MATERIAL	DRAWN	DATE	TITLE			Amphenol RF		
	J.CHEN	30-Oct-13	TNC JACK RIGHT ANGLE PC			Danbury CT USA, Tainan Taiwan, Shenzhen China		
ENGINEER	A.WU	DATE	MOUNT			www.amphenolrf.com		
REFERENCE	APPROVED	DATE				DRAWING NO. 31-5660		
	S.SIEH	31-Oct-13				ITEM NO. 31-5660		
	CAD FILE		SCALE: 2/1	SHEET	2 OF 2			
			DWG SIZE	CODE ID	REV			
			B	74868	P			
FINISH	F:\DWG\CNPD\31\5660-MSZ					PART NO. 31-5660		